



PROFESSIONAL TOOLS & EQUIPMENT

**QUALITY PRODUCTS
AT COMPETITIVE
PRICES**





TBQ-SJ03500A

3.5-Ton Floor Jack with Double Pump Technology

- Min. height: 4-3/4"
- Max. height: 18-1/8"
- Weight: 68.2 lbs



TBQ-AJ22000A

22-Ton Capacity Heavy Duty Air/Hydraulic Axle Jack

- Min. height: 8-3/4"
- Max. height: 17-11/16"
- Weight: 72.6 lbs
(Improved lighter weight design)



TBQ-AJ50000

50-Ton Capacity Heavy Duty Air/Hydraulic Axle Jack

- Min. height: 11-3/8"
- Max. height: 21-1/4"
- Weight: 101.2 lbs
(Improved lighter weight design)



TBQ-TAJ40200

40/20-Ton Air/ Hydraulic Jack

- Min. height: 5.9"
- Max. height: 16.1"
- Weight: 79.4 lbs



TBQ-TAJ53150

50/30/15-Ton Air/ Hydraulic Jack

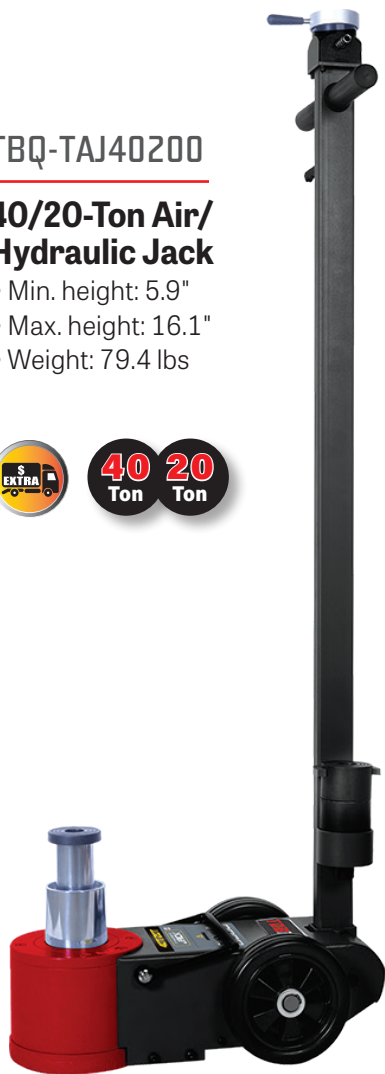
- Min. height: 5.9"
- Max. height: 17"
- Weight: 123.5 lbs



TBQ-TAJ60000

60-Ton Air/ Hydraulic Jack

- Min. height: 16.5"
- Max. height: 40.6"
- Weight: 278 lbs



TBQ-WD01500A

1,500 Lbs (3/4-Ton) Capacity Hydraulic Wheel Dolly

- Lift arms can be adjusted to handle different wheel combinations
- Safety chain for securing loads
- Lift arm length: 25-3/16"
- Lift arm min./max. spread: 23-7/16" – 27"
- Ram: 4-11/16"
- Dim.: 40-15/16" L x 42-3/4" W x 35" H
- Weight: 143 lbs





TJ00500A

TJ01000



Transmission Jacks

Item #	Capacity	Low Height	High Height	Weight
TBQ-TJ00500A	1/2-Ton	32-7/16"	69-5/8"	107 lbs
TBQ-TJ01000	1-Ton	33-1/4"	72-1/4"	158 lbs
TBQ-TJ01500	1.5-Ton	7.85"	36.2"	319 lbs



TJ01500

TBQ-UHS03400A

3/4 Ton Capacity Under Hoist Stand

- Cast iron handle
- Height adjustment spin handle
- Height adjustment: 53-1/2" to 80"
- Base diameter: 12"
- Weight: 31 lbs



TBQ-UHS01500A

1.5 Ton Capacity Heavy Duty Under Hoist Stand

- Adjustable saddle screw for additional height
- Large saddle with rubber pad
- Five height adjustments ranging from 49-1/4" to 79-15/16"
- Weight: 35.2 lbs



TBQ-4JPT

4-Pc Lifting Jack Pads for Tesla Models S, 3, X, Y

- These rubber pads are positioned under the designated Tesla lift points to prevent damage to the battery or the side rails of the vehicle when lifting
- Load capacity (4 pads): 5 ton



TBQ-ABJH20000A

20-Ton Heavy Duty Air/Manual Bottle Jack

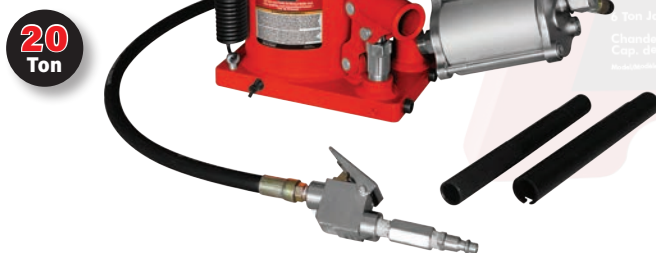
- Minimum height: 10-1/8"
- Maximum height: 19-13/16"
- Ram travel: 6.5"
- Screw adjustment: 3-3/16"
- Weight: 33.4 lbs



TBQ-ABJL20000A

20-Ton Heavy Duty Low Profile Air/Manual Bottle Jack

- Minimum height: 6-15/16" • Maximum height: 12-11/16"
- Ram travel: 3-3/8"
- Screw adjustment: 2-3/8"
- Weight: 28.5 lbs



BJH12000



BJH20000



BJH04000



BJHS20000

Professional Hydraulic Bottle Jacks

Item #	Capacity	Lift Height		Weight
		Low	High	
TBQ-BJH02000	2-Ton	6"	12.1	5.3 lbs
TBQ-BJH04000	4-Ton	7.7"	14.7"	6.4 lbs
TBQ-BJH08000	8-Ton	7.9"	14.9"	9.7 lbs
TBQ-BJH12000	12-Ton	8"	15.4"	13.2 lbs
TBQ-BJHS12000	12-Ton Low Profile	7.5"	13.8"	12.1 lbs
TBQ-BJH20000	20-Ton	9.6"	17.5"	21 lbs
TBQ-BJHS20000	20-Ton Low Profile	7.5"	13.4"	18.7 lbs
TBQ-BJH30000	30-Ton	10"	17.9"	38.6 lbs



JS06000



JS12000



JS22000

Pair of Jack Stands

Item #	Capacity	Lift Height		Weight
		Low	High	
Ratcheting Jack Stands				
• Spring loaded for quick lifting				
TBQ-JS06000B	6-Ton	15.75"	24.4"	32 lbs
TBQ-JS12000B	12-Ton	19.88"	30.31"	77 lbs
Pin Type Jack Stands				
TBQ-JS22000B	22-Ton	13.18"	19.69"	61 lbs





41" 4-Drawer Top Chest

- 19-gauge steel body • Deep clamshell lid with **built-in power strip**
- 100 lb rated soft close drawer slides
- PVC drawer liners and 4mm thick top chest mat
- 2 attachment plates for securing onto 41" rolling cabinet
- Dimensions: 41" W x 21.5" D x 23" H • Gross weight: 175 lbs

41" 11-Drawer Rolling Cabinet

- 19-gauge steel body
- 100 lb rated soft close drawer slides
(**double slides on top wide drawer and 2 bottom deep drawers**)
- Rated load capacity: 2,500 lbs
- PVC drawer liners
- Four 6" x 2" HD casters (2 swivel with brake + 2 rigid)
- Dimensions: 41" W x 21.5" D x 40.3" H • Gross weight: 285 lbs

41" HD Top Chests		6 Outlets	2 USB	41" HD Rolling Cabinets	
TBQ-TCBT410421ORBK	Orange			TBQ-RCBT411121ORBK	Orange
TBQ-TCBT410421LGBK	Green			TBQ-RCBT411121LGBK	Green
TBQ-TCBT410421RDBK	Red			TBQ-RCBT411121RDBK	Red
TBQ-TCBT410421BLBK	Blue			TBQ-RCBT411121BLBK	Blue



TBQ-UC300420

4-Drawer Heavy Duty Utility Cart

- Two gas struts in lid
- Keyed lock
- Ball bearing slides
- Aluminum drawer pulls
- Long screwdriver holder
- Heavy plastic protective corners
- 5" x 2" casters with pedal brake
- 31" L x 20" W x 40" H
- Weight: 123 lbs



72" 9-Drawer Top Chest

- 2 Separate deep lids with **2 power strips**
- 19-gauge steel body
- 100 lb rated soft close drawer slides
- Pull-out work surface drawer with flip-up wood top
- PVC drawer liners and 4mm thick top chest mat
- 2 attachment plates for securing onto 72" roller cabinet
- Dimensions: 72" W x 23" D x 23" H
- Gross weight: 300 lbs



72" 15-Drawer Rolling Cabinet

- 18-gauge steel body
- 100 lb rated soft close drawer slides (**double slides on top wide drawer and 3 bottom deep drawers**)
- Rated load capacity: 3,500 lbs
- Power strip on the left side wall
- 18mm wood work surface
- PVC drawer liners
- Six 6" x 2" HD casters (4 swivel with brake + 2 rigid)
- Dimensions: 72" W x 24" D x 39.5" H
- Gross weight: 516 lbs

72" HD Top Chests	
TBQ-TCBT720923ORBK	Orange
TBQ-TCBT720923LGBK	Green
TBQ-TCBT720923RDBK	Red
TBQ-TCBT720923BLBK	Blue

72" HD Rolling Cabinets	
TBQ-RCBT721524ORBK	Orange
TBQ-RCBT721524LGBK	Green
TBQ-RCBT721524RDBK	Red
TBQ-RCBT721524BLBK	Blue



61" 6-Drawer Top Chest

- 19-gauge steel body • Deep clamshell lid with **built-in power strip**
- 100 lb rated soft close drawer slides • Privacy drawer with separate lock
- PVC drawer liners and 4mm thick top chest mat
- 2 attachment plates for securing onto 61" rolling cabinet
- Dimensions: 61" W x 23" D x 23" H • Gross weight: 262 lbs

61" 11-Drawer Rolling Cabinet

- 19-gauge steel body
- 100 lb rated soft close drawer slides (**double slides on top wide drawer and 2 bottom deep drawers**)
- Rated load capacity: 3,000 lbs
- Power strip on the right side wall
- Bulk storage with door and adjustable height shelf and storage bin
- 18mm wood work surface • PVC drawer liners
- Four 6" x 2" HD casters (2 swivel w/brake + 2 rigid)
- Dim.: 61" W x 23" D x 38.4" H • Gross weight: 383 lbs

61" HD Top Chests	
TBQ-TCBT610623ORBK	Orange
TBQ-TCBT610623LGBK	Green
TBQ-TCBT610623RDBK	Red
TBQ-TCBT610623BLBK	Blue

61" HD Rolling Cabinets	
TBQ-RCBT611123ORBK	Orange
TBQ-RCBT611123LGBK	Green
TBQ-RCBT611123RDBK	Red
TBQ-RCBT611123BLBK	Blue



TOBEQ™ Professional Workshop Presses

- Fully welded construction for exceptional strength and durability
- Double speed pump with built-in safety overload valve
- Large pressure gauge filled with glycerin for easy reading
- Polycarbonate guard provides maximum protection and clear view
- 15 and 20-Ton presses delivered with a V-block set
- 30, 50, 75 and 100-Ton presses delivered with a pin set and a V-block set



On all these
TOBEQ™ Units

Item #	Capacity	Press	Min./Max. Work Height	Ram Stroke	Press Bed D x W	Weight
TBQ-SP15000	Bench Press 15-Ton	Hydraulic	6-5/16" x 18-1/8" (160.5 x 461mm)	6-1/4" (160mm)	4-3/4" x 19-1/16" (120 x 500mm)	168 lbs (76 kg)
TBQ-SP20000	20-Ton	Hydraulic	12-1/2" x 47-3/16" (318 x 1198mm)	7-1/4" (185mm)	5-3/16" x 20-1/16" (132 x 510mm)	238 lbs (108 kg)
TBQ-SP30000	30-Ton	Hydraulic	16-1/16" x 50-11/16" (408 x 1288mm)	6-11/16" (170mm)	5-1/2" x 21-1/16" (140 x 535mm)	416 lbs (188.5 kg)
TBQ-SP50000	50-Ton	Hydraulic	14-15/16" x 53-1/2" (379 x 1359mm)	7-7/8" (200mm)	8-1/8" x 28-3/4" (207 X 730mm)	687 lbs (311.5 kg)
TBQ-SP75000	75-Ton	Air/Hydraulic	18-7/16" x 46-9/16" (468 x 1182mm)	9-13/16" (250mm)	8-9/16" x 31-1/2" (217 x 800mm)	1098 lbs (498 kg)
TBQ-SP100000	100-Ton	Air/Hydraulic	18-1/2" x 46-1/16" (470 x 1170mm)	11-13/16" (300mm)	10-9/16" x 31" (268 x 787mm)	1689 lbs (766 kg)

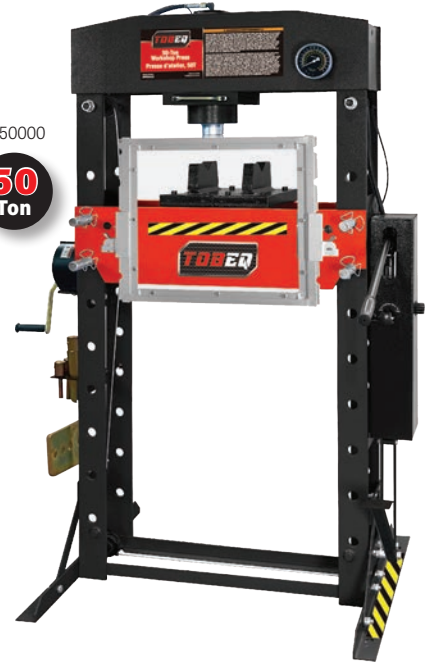
SP15000

**15
Ton**



SP50000

**50
Ton**



SP20000

**20
Ton**



SP30000

**30
Ton**



SP100000

**100
Ton**



SP75000

**75
Ton**





TBQ-17392

9-Pc Ball Joint Service Kit

- Kit includes installation and removing adapters for 1967 to current 1/2-Ton and 3/4-Ton 4WD vehicles having the Dana 44 front axle (found on Ford, GM, Dodge, IHC and Jeep vehicles)



TBQ-17398

21-Pc Master Ball Joint Service Kit

- Heavy duty tool set removes and installs ball joints, U-joints and brake anchor pins
- Includes a C-frame press and forcing screw, as well as all of the receiver tubes and adapters necessary to work on press-fit upper and lower ball joints on most Dodge, GM, Ford and other 2WD and 4WD cars, pickups, vans and SUVs through 2006



TBQ-10330

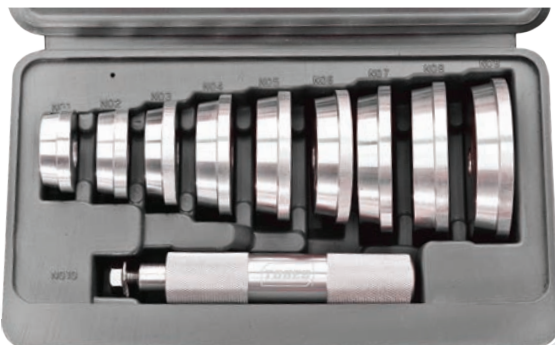
18-Pc Disc Brake Caliper Tool Kit

- Applicable to a wide variety of 2WD & 4WD vehicles
- Includes 15 adapter discs as well as left-hand & right hand thrust bolt assemblies to work on front or rear brakes

TBQ-17244

10-Pc Bearing Race & Seal Driver Set

- Sizes: 1.555" (39.5mm) to 3.189" (81mm)

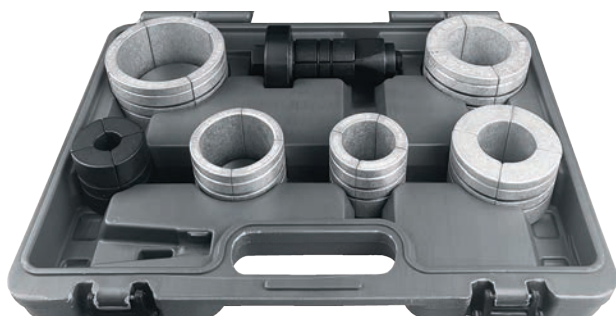




TBQ-12370

7-Pc Truck Hub Seal Installer Kit

- Fits the most popular sizes for Class 7 & 8 over the road trucks and trailers as well as some medium duty trucks
- Includes (5) drivers: 4-13/16" to 6"-5/16"



TBQ-34700

7-Pc Exhaust Pipe Stretcher Kit

- Use with an impact wrench to quickly stretch all pipes, including stainless steel
- Stretch pipes from 1-5/8" to 4-1/4"



TBQ-11332

7-Pc Sensor and Sending Unit Socket Set

- A variety of sockets to replace O2 sensors, oil pressure switches, oil sender units, vacuum switches and thermal sensor switches



12

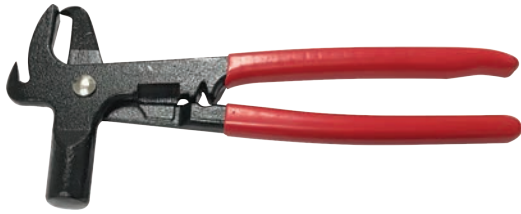
Raised Panel Combination Wrench Sets

Item #	Piece Count	Size Range	
STANDARD Size			
TBQ-5116M	16-Piece	10mm – 32mm	In a Roll Pouch
TBQ-6014	14-Piece	3/8" – 1-1/4"	In a Roll Pouch
JUMBO Size			
TBQ-5110MJ	10-Piece	30mm – 42mm	
TBQ-6010J	10-Piece	1-5/16" – 2"	
TBQ-6004J	4-Piece	2-1/8" – 2-1/2"	

TBQ-6658

Wheel Weight Tool

- Installs, removes, trims and tightens all types of clip-on wheel weights



Electronic Inch/Metric Stainless Steel Calipers

Item #	Range	Graduations
TBQ-6426	0 - 6"/150mm	0.001"
TBQ-6428	0 - 8"/200mm	0.001"
TBQ-6412	0 - 12"/270mm	0.01"



TBQ-6426

Split Beam Flexible Head Click Torque Wrenches

- Unique design does not require returning to zero before storage
- Quick adjustment
- 15° swing arc • 1 year limited warranty

Item #	Drive	Torque	Head Style
TBQ-TWSB100F	3/8"	20-100 ft-lb	Flexible Head
TBQ-TWSB250F	1/2"	40-250 ft-lb	Flexible Head



TBQ-TWSB600F

3/4" Drive Split Beam Click Type Extendable Torque Wrench with Detachable Ratchet

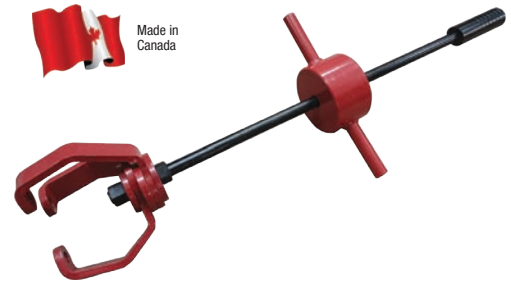
- 200-600 ft-lb
- Quick adjustment
- Push-through square drive ratchet head
- 1 year limited warranty



TBQ-1190A

Universal Axle Shaft Puller

- Improved model
- 15 lbs slide hammer



Made in Canada

TBQ-1197

Universal Axle Shaft Puller & Pusher Super Kit

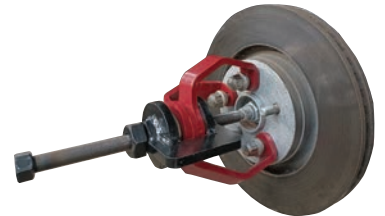
- Includes #TBQ-1190A and #TBQ-1196



TBQ-1195

Drive Shaft Pusher/Hub Puller with Extractor Jaw

- Includes #TBQ-1193 and #TBQ-1196



TBQ-1193

Three Adapter Legs

- Works with older model #CVO-1190



TBQ-1196

Extractor Jaw with 30cm Push Screw

