

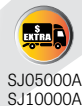


Q3 2025

PROFESSIONAL TOOLS & EQUIPMENT

QUALITY PRODUCTS
AT COMPETITIVE
PRICES





SJ05000A
SJ10000A



ASJ05000A
ASJ10000A

Long Chassis Floor Jacks

Item #	Cap.	Lift Height		Chassis Length	Weight
		Low	High		
Hydraulic Floor Jacks					
TBQ-SJ05000A	5-Ton	5-7/8"	25-9/16"	54.9"	226 lbs
TBQ-SJ10000A	10-Ton	6-5/16"	25-9/16"	59.6"	307 lbs
Air/Hydraulic Floor Jacks					
TBQ-ASJ05000A	5-Ton	5-7/8"	25-9/16"	54.9"	230 lbs
TBQ-ASJ10000A	10-Ton	6-5/16"	25-9/16"	59.6"	311 lbs

TBQ-ALSJ03000

3-Ton Aluminum Floor Service Jack

- Double pump technology for fast operation
- Built-in overload safety valve
- Min. height: 3-15/16"
- Max. height: 19-1/16"
- Weight: 67 lbs



TBQ-SJPAK03000

3-Ton Floor Jack and Jack Stands Combo Kit

3-ton floor jack:

- Min./Max. height: 4-3/4"/17-3/4"
- Weight: 61.5 lbs

3-ton pair of jack stands:

- The rated capacity is per pair
- Min./Max. height: 11.5"/16-7/8"
- Weight: 15 lbs



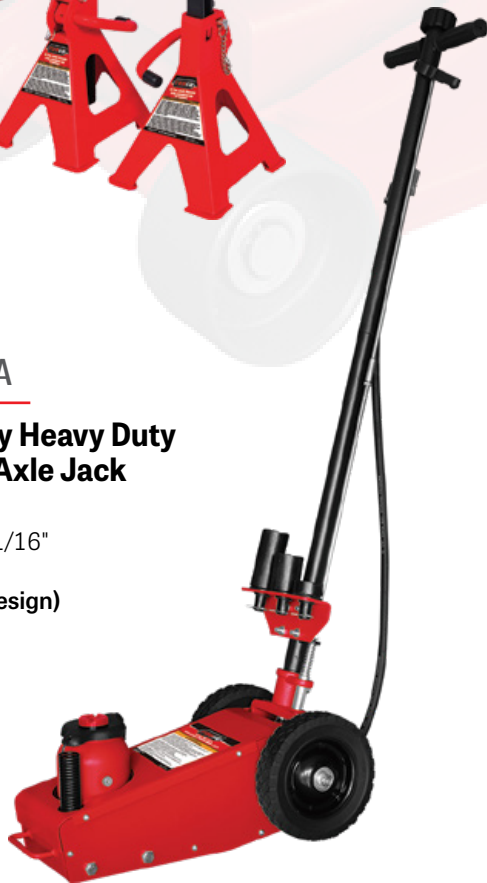
TBQ-AJ22000A

22-Ton Capacity Heavy Duty Air/Hydraulic Axle Jack

- Min. height: 8-3/4"
- Max. height: 17-11/16"
- Weight: 72.6 lbs (Lighter weight design)



22
Ton



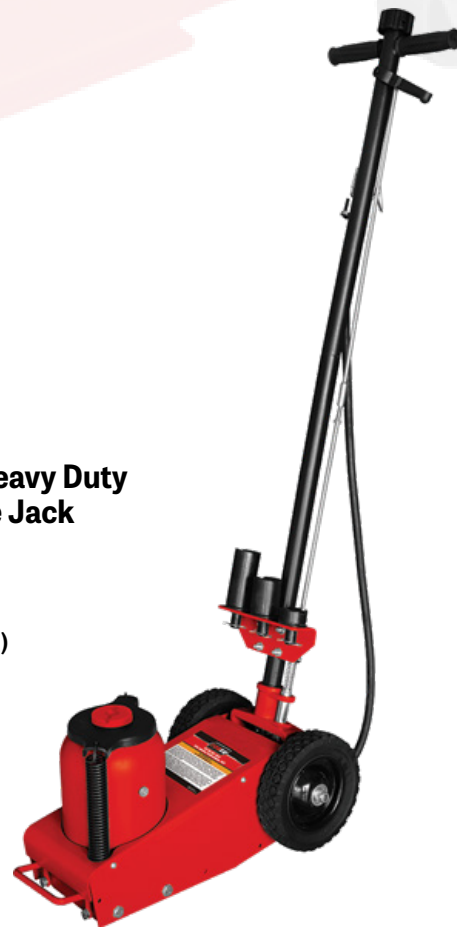
TBQ-AJ50000

50-Ton Capacity Heavy Duty Air/Hydraulic Axle Jack

- Min. height: 11-3/8"
- Max. height: 21-1/4"
- Weight: 101.2 lbs (Lighter weight design)



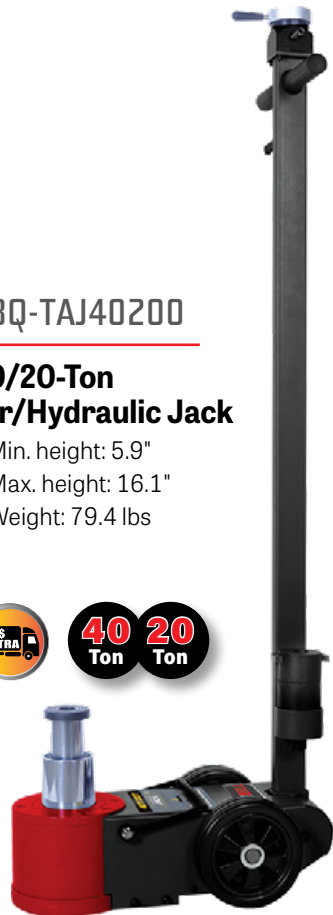
50
Ton



TBQ-TAJ40200

40/20-Ton Air/Hydraulic Jack

- Min. height: 5.9"
- Max. height: 16.1"
- Weight: 79.4 lbs



TBQ-TAJ53150

50/30/15-Ton Air/Hydraulic Jack

- Min. height: 5.9"
- Max. height: 17"
- Weight: 123.5 lbs



TBQ-TAJ60000

60-Ton Air/Hydraulic Jack

- Min. height: 16.5"
- Max. height: 40.6"
- Weight: 278 lbs



TBQ-PAJ10000

10-Ton Portable Air Lift Jack

- Low height: 17-1/2"
- Extended height: 51-1/8"
- Weight: 199.5 lbs



TBQ-WD01500A

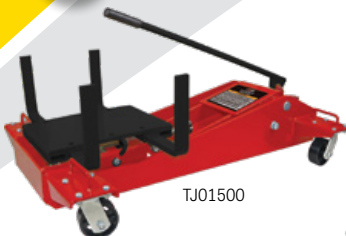
1,500 Lbs (3/4-Ton) Capacity Hydraulic Wheel Dolly

- Lift arms can be adjusted to handle different wheel combinations
- Safety chain for securing loads
- Lift arm length: 25-3/16"
- Lift arm min./max. spread: 23-7/16" – 27" • Ram: 4-11/16"
- Dim.: 40-15/16" L x 42-3/4" W x 35" H • Weight: 143 lbs





**1.5
Ton**



TJ01500

Transmission Jacks

Item #	Capacity	Low Height	High Height	Weight
TBQ-TJ00500A	1/2-Ton	32-7/16"	69-5/8"	107 lbs
TBQ-TJ01000	1-Ton	33-1/4"	72-1/4"	158 lbs
TBQ-TJ01500	1.5-Ton	7.85"	36.2"	319 lbs
TBQ-TJ02000	2-Ton	8-1/4"	37-3/8"	270 lbs



**1/2
Ton**



**1
Ton**



TJ00500A

TJ01000

**2
Ton**



TJ02000

TBQ-PHJ01500

1500 Lbs (3/4 Ton) Hydraulic Vehicle Positioning Jack

- Max. tire width: 13"
- Max. tire diameter: 32"
- Min./Max. opening: 14-3/4" / 27-3/4"



TBQ-TC00300

300 Lbs Capacity Heavy-Duty Truck Tire & Wheel Cart

- For 36" to 48" diameter tires
- Roller spread: 19-1/2"
- Roller length: 9-1/2"



TBQ-TR20000

20-Ton Capacity Pair of Wide Truck Ramps

- Max. tire width: 15.5"
- Retractable T-handle
- Weight: 327 lbs

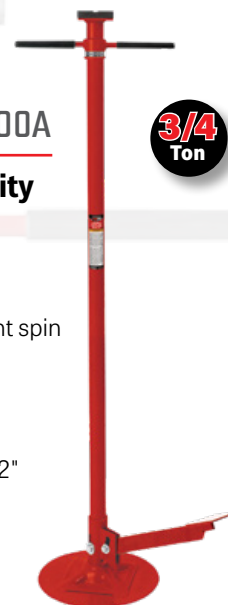


TBQ-UHS03400A

3/4 Ton Capacity Under Hoist Stand

- Cast iron handle
- Height adjustment spin handle
- Height adjustment: 53-1/2" to 80"
- Base diameter: 12"
- Weight: 31 lbs

**3/4
Ton**



TBQ-UHS01500A

1.5 Ton Capacity Heavy Duty Under Hoist Stand

- Adjustable saddle screw for additional height
- Large saddle with rubber pad
- Five height adjustments ranging from 49-1/4" to 79-15/16"
- Weight: 35.2 lbs

**1-1/2
Ton**



TBQ-ABJH20000A

20-Ton Heavy Duty Air/Manual Bottle Jack

- Minimum height: 10-1/8"
- Maximum height: 19-13/16"
- Ram travel: 6.5"
- Screw adjustment: 3-3/16"
- Weight: 33.4 lbs



TBQ-ABJL20000A

20-Ton Heavy Duty Low Profile Air/Manual Bottle Jack

- Minimum height: 6-15/16"
- Maximum height: 12-11/16"
- Ram travel: 3-3/8"
- Screw adjustment: 2-3/8"
- Weight: 28.5 lbs



Jack Stands (Pair)

Item #	Capacity	Lift Height		Weight
		Low	High	
Ratcheting Jack Stands				
• Spring loaded for quick lifting				
TBQ-JS06000B	6-Ton	15-7/16"	23-5/16"	32 lbs
TBQ-JS12000B	12-Ton	17-7/8"	29-1/8"	68 lbs
Pin Type Jack Stands				
TBQ-JS10000	10-Ton	27-9/16"	46-7/8"	112 lbs
TBQ-JS22000B	22-Ton	12-3/8"	19-5/8"	61 lbs

TBQ-AHP10000

10,000 PSI Air/Hydraulic Foot Pump

- Usable oil: 98 cu. in.
- Aluminum reservoir



Professional Hydraulic Bottle Jacks

Item #	Capacity	Lift Height		Weight
		Low	High	
TBQ-BJH02000	2-Ton	6"	12.1	5.3 lbs
TBQ-BJH04000	4-Ton	7.7"	14.7"	6.4 lbs
TBQ-BJH08000	8-Ton	7.9"	14.9"	9.7 lbs
TBQ-BJH12000	12-Ton	8"	15.4"	13.2 lbs
TBQ-BJHS12000	12-Ton Low Profile	7.5"	13.8"	12.1 lbs
TBQ-BJH20000	20-Ton	9.6"	17.5"	21 lbs
TBQ-BJHS20000	20-Ton Low Profile	7.5"	13.4"	18.7 lbs
TBQ-BJH30000	30-Ton	10"	17.9"	38.6 lbs

TBQ-4JPT

4-Pc Lifting Jack Pads for Tesla Models S, 3, X, Y

- These rubber pads are positioned under the designated Tesla lift points to prevent damage to the battery or the side rails of the vehicle when lifting
- Load capacity (4 pads): 5 ton





41" 4-Drawer Top Chest

- 19-gauge steel body • Deep clamshell lid with **built-in power strip**
- 100 lb rated soft close drawer slides
- PVC drawer liners and 4mm thick top chest mat
- 2 attachment plates for securing onto 41" rolling cabinet
- Dimensions: 41" W x 21.5" D x 23" H • Gross weight: 175 lbs

41" 11-Drawer Rolling Cabinet

- 19-gauge steel body
- 100 lb rated soft close drawer slides
(double slides on top wide drawer and 2 bottom deep drawers)
- Rated load capacity: 2,500 lbs
- PVC drawer liners
- Four 6" x 2" HD casters (2 swivel with brake + 2 rigid)
- Dimensions: 41" W x 21.5" D x 40.3" H • Gross weight: 285 lbs

41" HD Top Chests	6 Outlets 2 USB
TBQ-TCBT410421ORBK	Orange
TBQ-TCBT410421LGBK	Green
TBQ-TCBT410421RDBK	Red
TBQ-TCBT410421BLBK	Blue

41" HD Rolling Cabinets	
TBQ-RCBT411121ORBK	Orange
TBQ-RCBT411121LGBK	Green
TBQ-RCBT411121RDBK	Red
TBQ-RCBT411121BLBK	Blue



TBQ-UC300420

4-Drawer Heavy Duty Utility Cart

- Two gas struts in lid
- Keyed lock
- Ball bearing slides
- Aluminum drawer pulls
- Long screwdriver holder
- Heavy plastic protective corners
- 5" x 2" casters with pedal brake
- 31" L x 20" W x 40" H
- Weight: 123 lbs



72" 9-Drawer Top Chest

- 2 Separate deep lids with **2 power strips**
- 19-gauge steel body
- 100 lb rated soft close drawer slides
- Pull-out work surface drawer with flip-up wood top
- PVC drawer liners and 4mm thick top chest mat
- 2 attachment plates for securing onto 72" roller cabinet
- Dimensions: 72" W x 23" D x 23" H
- Gross weight: 300 lbs

72" 15-Drawer Rolling Cabinet

- 18-gauge steel body
- 100 lb rated soft close drawer slides (**double slides on top wide drawer and 3 bottom deep drawers**)
- Rated load capacity: 3,500 lbs
- Power strip on the left side wall
- 18mm wood work surface
- PVC drawer liners
- Six 6" x 2" HD casters (4 swivel with brake + 2 rigid)
- Dimensions: 72" W x 24" D x 39.5" H
- Gross weight: 516 lbs

72" HD Top Chests	6 Outlets	2 USB
TBQ-TCBT720923ORBK	Orange	
TBQ-TCBT720923LGBK	Green	
TBQ-TCBT720923RDBK	Red	
TBQ-TCBT720923BLBK	Blue	

72" HD Rolling Cabinets	6 Outlets	2 USB
TBQ-RCBT721524ORBK	Orange	
TBQ-RCBT721524LGBK	Green	
TBQ-RCBT721524RDBK	Red	
TBQ-RCBT721524BLBK	Blue	



61" 6-Drawer Top Chest

- 19-gauge steel body • Deep clamshell lid with **built-in power strip**
- 100 lb rated soft close drawer slides • Privacy drawer with separate lock
- PVC drawer liners and 4mm thick top chest mat
- 2 attachment plates for securing onto 61" rolling cabinet
- Dimensions: 61" W x 23" D x 23" H • Gross weight: 262 lbs

61" 11-Drawer Rolling Cabinet

- 19-gauge steel body
- 100 lb rated soft close drawer slides (**double slides on top wide drawer and 2 bottom deep drawers**)
- Rated load capacity: 3,000 lbs
- Power strip on the right side wall
- Bulk storage with door and adjustable height shelf and storage bin
- 18mm wood work surface • PVC drawer liners
- Four 6" x 2" HD casters (2 swivel w/brake + 2 rigid)
- Dim.: 61" W x 23" D x 38.4" H • Gross weight: 383 lbs

61" HD Top Chests	6 Outlets	2 USB
TBQ-TCBT610623ORBK	Orange	
TBQ-TCBT610623LGBK	Green	
TBQ-TCBT610623RDBK	Red	
TBQ-TCBT610623BLBK	Blue	

61" HD Rolling Cabinets	6 Outlets	2 USB
TBQ-RCBT611123ORBK	Orange	
TBQ-RCBT611123LGBK	Green	
TBQ-RCBT611123RDBK	Red	
TBQ-RCBT611123BLBK	Blue	





SP15000

**15
Ton**



SP20000

**20
Ton**



SP30000

**30
Ton**



SP50000

**50
Ton**



SP75000

**75
Ton**



SP100000

**100
Ton**



TOBEQ™ Professional Workshop Presses

- Fully welded construction for exceptional strength and durability
- Double speed pump with built-in safety overload valve
- Large pressure gauge filled with glycerin for easy reading
- Now with a 10mm polycarbonate clear view guard on 20-Ton to 100-Ton models, (4mm guard on 15-Ton model)
- 15 and 20-Ton presses delivered with a V-block set
- 30, 50, 75 and 100-Ton presses delivered with a pin set and a V-block set

Item #	Capacity	Press	Min./Max. Work Height	Ram Stroke	Press Bed D x W	Weight
TBQ-SP15000	Bench Press 15-Ton	Hydraulic	6-5/16" x 18-1/8" (160.5 x 461mm)	6-1/4" (160mm)	4-3/4" x 19-11/16" (120 x 500mm)	168 lbs (76 kg)
TBQ-SP20000	20-Ton	Hydraulic	12-1/2" x 47-3/16" (318 x 1198mm)	7-1/4" (185mm)	5-3/16" x 20-1/16" (132 x 510mm)	238 lbs (108 kg)
TBQ-SP30000	30-Ton	Hydraulic	16-1/16" x 50-11/16" (408 x 1288mm)	6-11/16" (170mm)	5-1/2" x 21-1/16" (140 x 535mm)	416 lbs (188.5 kg)
TBQ-SP50000	50-Ton	Hydraulic	14-15/16" x 53-1/2" (379 x 1359mm)	7-7/8" (200mm)	8-1/8" x 28-3/4" (207 X 730mm)	687 lbs (311.5 kg)
TBQ-SP75000	75-Ton	Air/Hydraulic	18-7/16" x 46-9/16" (468 x 1182mm)	9-13/16" (250mm)	8-9/16" x 31-1/2" (217 x 800mm)	1098 lbs (498 kg)
TBQ-SP100000	100-Ton	Air/Hydraulic	18-1/2" x 46-1/16" (470 x 1170mm)	11-13/16" (300mm)	10-9/16" x 31" (268 x 787mm)	1689 lbs (766 kg)



TBQ-17392

9-Pc Ball Joint Service Kit

- Kit includes installation and removing adapters for 1967 to current 1/2-Ton and 3/4-Ton 4WD vehicles having the Dana 44 front axle (found on Ford, GM, Dodge, IHC and Jeep vehicles)



TBQ-17398

21-Pc Master Ball Joint Service Kit

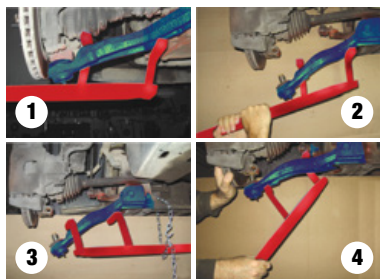
- Heavy duty tool set removes and installs ball joints, U-joints and brake anchor pins
- Includes a C-frame press and forcing screw, as well as all of the receiver tubes and adapters necessary to work on press-fit upper and lower ball joints on most Dodge, GM, Ford and other 2WD and 4WD cars, pickups, vans and SUVs through 2006



TBQ-1199

Lower Control Arm Triple Action Tool

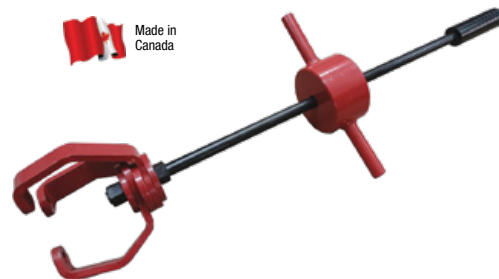
- For CV axle and strut repair
- Makes strut replacement easy
- Removes ball joints without damage
- Re-installs lower control arm



TBQ-1190A

Universal Axle Shaft Puller

- Improved model
- 15 lbs slide hammer



TBQ-1197

Universal Axle Shaft Puller & Pusher Super Kit

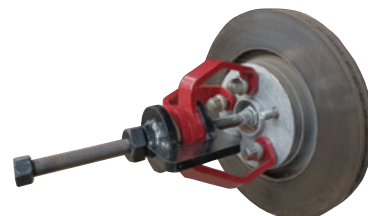
- Includes #TBQ-1190A and #TBQ-1196



TBQ-1195

Drive Shaft Pusher/Hub Puller with Extractor Jaw

- Includes #TBQ-1193 and #TBQ-1196



TBQ-1193

Three Adapter Legs

- Works with older model #CVO-1190



TBQ-1196

Extractor Jaw with 30cm Push Screw





TBQ-17244

10-Pc Bearing Race & Seal Driver Set

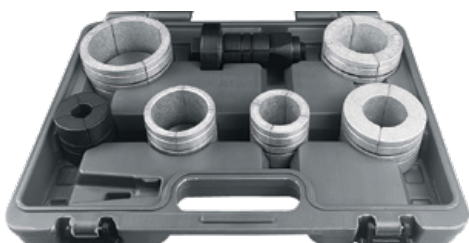
- Sizes: 1.555" (39.5mm) to 3.189" (81mm)



TBQ-12370

7-Pc Truck Hub Seal Installer Kit

- Fits the most popular sizes for Class 7 & 8 over the road trucks and trailers as well as some medium duty trucks
- Includes (5) drivers: 4-13/16" to 6"-5/16"



TBQ-34700

7-Pc Exhaust Pipe Stretcher Kit

- Use with an impact wrench to quickly stretch all pipes, including stainless steel
- Stretch pipes from 1-5/8" to 4-1/4"



TBQ-11332

7-Pc Sensor and Sending Unit Socket Set

- A variety of sockets to replace O2 sensors, oil pressure switches, oil sender units, vacuum switches and thermal sensor switches



TBQ-10330

18-Pc Disc Brake Caliper Tool Kit

- Applicable to a wide variety of 2WD & 4WD vehicles
- Includes 15 adapter discs as well as left-hand & right hand thrust bolt assemblies to work on front or rear brakes



TBQ-6658

Wheel Weight Tool

- Installs, removes, trims and tightens all types of clip-on wheel weights

Electronic Inch/Metric Stainless Steel Calipers

Item #	Range	Graduations
TBQ-6426	0 - 6"/150mm	0.001"
TBQ-6428	0 - 8"/200mm	0.001"
TBQ-6412	0 - 12"/270mm	0.01"



6426



6412

Raised Panel Combination Wrench Sets

- Professional quality
- Lifetime warranty against manufacturer's defects

Item #	Piece Count	Size Range	
STANDARD Size			
TBQ-5116M	16-Piece	10mm – 32mm	In a Roll Pouch
TBQ-6014	14-Piece	3/8" – 1-1/4"	In a Roll Pouch
JUMBO Size			
TBQ-5110MJ	10-Piece	30mm – 42mm	
TBQ-6010J	10-Piece	1-5/16" – 2"	
TBQ-6004J	4-Piece	2-1/8" – 2-1/2"	



Individual JUMBO Combination Wrenches

Item #	Size	Item #	Size
TBQ-51030MJ	30mm	TBQ-61046J	1-7/16"
TBQ-51031MJ	31mm	TBQ-61048J	1-1/2"
TBQ-51032MJ	32mm	TBQ-61052J	1-5/8"
TBQ-51033MJ	33mm	TBQ-61054J	1-11/16"
TBQ-51034MJ	34mm	TBQ-61056J	1-3/4"
TBQ-51035MJ	35mm	TBQ-61058J	1-13/16"
TBQ-51036MJ	36mm	TBQ-61060J	1-7/8"
TBQ-51038MJ	38mm	TBQ-61064J	2"
TBQ-51041MJ	41mm	TBQ-61068J	2-1/8"
TBQ-51042MJ	42mm	TBQ-61072J	2-1/4"
TBQ-61042J	1-5/16"	TBQ-61076J	2-3/8"
TBQ-61044J	1-3/8"	TBQ-61080J	2-1/2"



Individual Raised Panel Combination Wrenches

Item #	Size	Item #	Size
TBQ-51010M	10mm	TBQ-61012	3/8"
TBQ-51011M	11mm	TBQ-61014	7/16"
TBQ-51012M	12mm	TBQ-61016	1/2"
TBQ-51013M	13mm	TBQ-61018	9/16"
TBQ-51014M	14mm	TBQ-61020	5/8"
TBQ-51015M	15mm	TBQ-61022	11/16"
TBQ-51016M	16mm	TBQ-61024	3/4"
TBQ-51017M	17mm	TBQ-61026	13/16"
TBQ-51018M	18mm	TBQ-61028	7/8"
TBQ-51019M	19mm	TBQ-61030	15/16"
TBQ-51021M	21mm	TBQ-61032	1"
TBQ-51022M	22mm	TBQ-61034	1-1/16"
TBQ-51024M	24mm	TBQ-61036	1-1/8"
TBQ-51025M	25mm	TBQ-61040	1-1/4"
TBQ-51030M	30mm		
TBQ-51032M	32mm		

Split Beam Flexible Head Click Torque Wrenches

- Does not require returning to zero before storage
- Quick adjustment • 15° swing arc
- 1 year limited warranty

Item #	Drive	Torque	Head Style
TBQ-TWSB100F	3/8"	20-100 ft-lb	Flexible Head
TBQ-TWSB250F	1/2"	40-250 ft-lb	Flexible Head



TBQ-TWSB600F

3/4" Drive Split Beam Click Type Extendable Torque Wrench with Detachable Ratchet

- 200-600 ft-lb
- Quick adjustment
- Push-through square drive ratchet head
- 1 year limited warranty

