



g2stobeq.ca

Q3  
2025

# ELECTRIC & HYBRID VEHICLE SAFETY SOLUTIONS



Brands Featured:





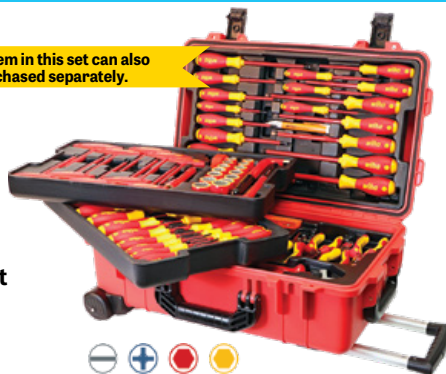
# ELECTRIC & HYBRID VEHICLE SAFETY SOLUTIONS

## EV & HEV Service Tools & Equipment

**wiha**



Each item in this set can also be purchased separately.



WIH-32800

### 80-Pc Insulated Tool Set in Rolling Tool Case

- Screwdrivers:
  - Slotted: 2.5mm – 10mm
  - Phillips: #0, #1, #2, #3
  - Torx®: T6-T30
  - Square: #1, #2
  - Terminal block: #1, #2
- Nut drivers: 7/32" – 7/16", 5mm – 13mm
- Sockets: 1/2" – 7/8", 13mm – 22mm
- T-Handles: 5/32" – 3/8", 4mm – 8mm • L-keys: 1/2" & 10mm • Pliers • Cutters
- Ratchet: 3/8" drive • Extension: 3/8" x 5" • Cable knife: 2" (50mm)
- 2 Meter ruler: inch/metric • Category IV voltage detector: 110V to 250V
- Rolling water tight tool case: 22" L x 13-3/4" W x 9" H • Certified to 1000 Volt AC



Each item in this set can also be purchased separately.

WIH-32876

### 66-Pc Insulated Tool Set

- Screwdrivers:
  - Slotted: 2mm-10mm
  - Phillips: #0, #1, #2, #3
  - Torx®: T8-T30
  - Square: #1, #2
  - Terminal block: #1, #2
- Nut drivers: 1/4" – 7/16"
- Sockets: 1/2" – 7/8", 8 – 22mm
- Hex T-Handles: 5/32" – 3/8", 4 – 8mm
- Hex L-keys: 1/2" & 10mm
- Pliers
- Cutters
- Adjustable wrench
- Ratchet: 3/8" drive
- Extension: 3/8" x 5"
- Cable knife: 2" (50mm)
- Certified to 1000 Volt AC



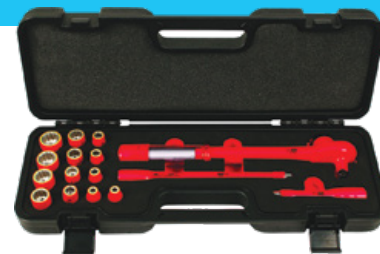
WIH-91890

### 26-Piece Insulated Essentials Tool Kit

- Screwdrivers:
  - Slotted: 3.5mm, 4.5mm, 6.5mm
  - Phillips: #1, #2
  - Torx®: T20, T25, T30
- 1/4" drive, 6 pt. sockets: 5-13mm
- 1/4" drive ratchet
- 2" & 4" extension bars
- Open end wrenches: 8mm-13mm
- 8" Tweezers • 3-Pc pliers/cutters
- 8.5" Cable stripping knife

Each item in this set can also be purchased separately.

**wiha**



### 16-Pc 3/8" Drive Insulated Ratcheting Torque Wrench and Socket Sets

Sets include:

- Ratcheting torque wrench: 4-37 ft-lb (5-50 Nm)
- Metric or SAE sockets
- Extension bars: 5" & 10"
- Certified to 1000 Volt AC

Each item in this set can also be purchased separately.

WIH-30190	SAE	1/4" – 7/8"
WIH-30192	Metric	8mm – 20mm

WIH-31391

### 13-Pc 1/4" Drive Insulated Metric Socket Set

- Sockets: 5mm – 14mm
- Extensions: 2", 4"
- 1/4" Drive reversible ratchet
- Certified to 1000 Volt AC or 1500 Volt DC

Each item in this set can also be purchased separately.



WIH-31590

### 10-Pc 3/8" Drive Insulated Metric Socket Set

- Sockets: 8mm – 19mm
- Extension: 5"
- 3/8" Drive reversible ratchet
- Certified to 1000 Volt AC or 1500 Volt DC

Each item in this set can also be purchased separately.



**TITAN**

TIT-66100

### 18-Pc 1/4" Drive Metric Socket Set, 1000V Insulated

- (13) Sockets: 4-14 mm
- Extensions: 2", 3", 4", 6"
- 1/4" drive reversible ratchet with quick release



**wiha**



Each item in this set can also be purchased separately.

WIH-31491

### 16-Pc 3/8" Drive Insulated Inch/Metric Socket Set

- Inch sockets: 5/16" – 3/4"
- Metric sockets: 8mm – 19mm
- Certified to 1000 Volt AC or 1500 Volt DC



# ELECTRIC & HYBRID VEHICLE SAFETY SOLUTIONS



## EV & HEV Service Tools & Equipment

**wiha** 

Made in Germany

### Insulated Extensions

- Certified to 1000 Volt AC or 1500 Volt DC

WIH-12854 1/4" x 2"

WIH-12855 1/4" x 4"

12854



**TITAN**



TIT-17237

### 7-Pc Insulated Screwdriver Set with Magnetic Tips

- Slotted: 1/8" x 3", 5/32" x 4", 7/32" x 5", 1/4" x 6"
- Phillips: #0 x 3", #1 x 4", #2 x 4"



**TITAN**



TIT-73277

### 7-Pc Insulated Precision Screwdriver Set

- Slotted: 1.5mm x 1.5", 1.8mm x 2-15/16", 2.0mm x 2-15/16", 2.5mm x 3", 3.0mm x 3"
- Phillips: #00 x 3", #0 x 3"



**wiha** 

Made in Germany



Each item in this set can also be purchased separately.



WIH-28789

### 11-Pc Insulated TorqueVario-S Driver and SlimLine Blade Set

- TorqueVario-S driver: 10-50 in-lb
- SlimLine insulated blades: Slotted: 4mm, 6.5mm; Phillips: #1, #2; Square: #1, #2; Xeno: Terminal #1, #2
- Certified to 1000 Volt AC

**CRESCENT**



CRE-CTVDESDS

### 7-Pc VDE 1000V Insulated Screwdriver Set

- Slotted: 1/8" x 3", 5/32" x 4", 7/32" x 5", 1/4" x 6"
- Phillips: #0 x 3", #1 x 3", #2 x 4"



**Milwaukee**

### Milwaukee® 1000V Insulated Tools

- Tested and certified to UL®, OSHA, VDE & GS standards
- Dual layer insulation offers visual wear indication for tool replacement
- Flame retardant & impact resistant handle and shank
- Visible ID markings



MLW-48-22-2202

### 3-Pc 1000V Insulated Screwdriver Set

- ECX™: #1 x 4"
- Phillips: #2 x 4"
- Slotted: 1/4" x 6"



MLW-48-22-2204

### 4-Pc 1000V Insulated Screwdriver Set

- Slotted: 1/4" and 3/8" – 6" and 8" long
- Phillips: #1 and #2 – 3" and 4" long



MLW-48-22-2205

### 4-Pc 1000V Insulated Screwdriver Set

- Slotted: 1/4" and 3/8" – 6" and 8" long
- Square: #1 and #2 – 3" and 4" long



MLW-48-22-2210

### 10-Pc 1000V Insulated Screwdriver Set

- ECX™: #1 x 4"
- Phillips: #1 x 3", #2 x 4", #3 x 6"
- Slotted: 1/4" x 6", 5/16" x 7", 3/8" x 8"
- Square: #1 x 3", #2 x 4", #3 x 6"



48-22-2216



48-22-2218



**Milwaukee**

48-22-2217



48-22-2218

### 1000V Insulated Slim Tip Multi-Bit Screwdrivers with Storage Pouch

	MLW-48-22-2216	MLW-48-22-2217	MLW-48-22-2218
	4-in-1	8-in-1	8-in-1
Phillips	+	#2	#00, #0
Slotted	—	3/32", 1/8"	#1, #2
Security Torx®	☆	TP7, TP8, TP10, TP15	3/16", 1/4"
Square	■	#2	#1, #2
ECX™	◆		#1, #2





# ELECTRIC & HYBRID VEHICLE SAFETY SOLUTIONS

## EV & HEV Service Tools & Equipment

**wiha**

Made in Germany

Each item in this set can also be purchased separately.



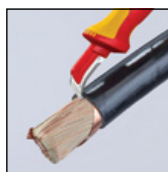
### Insulated T-Handle Hex Screwdriver Sets

• Certified to 1000 Volt AC

WIH-33478	5-Piece	Metric: 4mm, 5mm, 6mm, 8mm, 10mm
WIH-33490	6-Piece	Inch: 5/32", 3/16", 7/32", 1/4", 5/16", 3/8"

**KNIPEX**

Made in Germany



KNI-98 55

### 1000-Volt Insulated Electrician's Dismantling Knife, 7" Long

• 1.5" fixed hook blade with guide shoe at the blade point: no damage of the conductor insulation

**CATU**

Made in France

### Insulated Cable Cutters

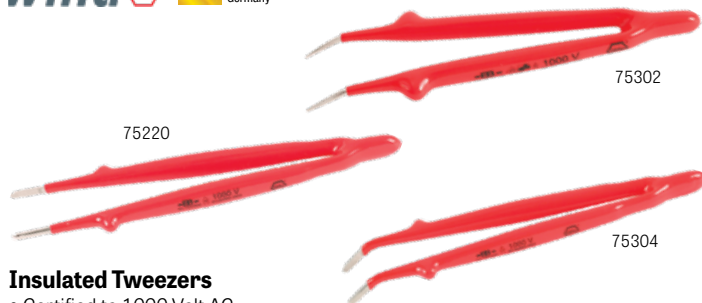
• Operating voltage: 1000V AC – 1500V DC



Item #	Length	Capacity
CTU-MO-67501	7"	15mm
CTU-MO-67502	9"	18mm

**wiha**

Made in Germany



### Insulated Tweezers

• Certified to 1000 Volt AC

Item #	Description
WIH-75220	8" Insulated Tweezers, Serrated, Straight Blunt Tip
WIH-75302	6" Insulated Tweezers, Serrated, Angled Fine Tip
WIH-75304	8" Insulated Tweezers, Serrated, Angled Blunt Tip

**KNIPEX**

Made in Germany

KNI-98 99 11

### 17-Pc Compact Tool Set, 1000V Insulated

- 8" Combination pliers
- 6-1/4" Diagonal cutters
- 7-1/4" Cable knife
- Slotted screwdrivers: 1/8", 5/32", 7/32"
- Phillips® screwdriver: #0
- 1/2" Drive reversible ratchet
- 1/2" Drive Hex socket set: 10mm-19mm
- Extensions: 5", 10"



**wiha**

Made in Germany

WIH-20196

### 13-Pc Insulated Open End Wrench Tray Set

- 8mm, 10mm, 11mm, 12mm, 13mm, 14mm, 15mm, 16mm, 17mm, 18mm, 19mm, 22mm, 24mm
- Certified to 1000 Volt AC



Each item in this set can also be purchased separately.

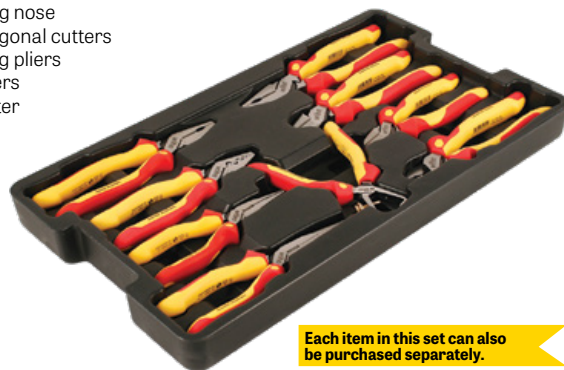
WIH-32999

### 9-Pc Insulated Pliers/Cutters Tray Set

- 9" Lineman's with crimper
- 8" Lineman's
- 6.3" & 8" Long nose
- 6.3" & 8" Diagonal cutters
- 6.3" Stripping pliers
- 7" Crimp pliers
- 8" Cable cutter

**wiha**

Made in Germany



Each item in this set can also be purchased separately.

# ELECTRIC & HYBRID VEHICLE SAFETY SOLUTIONS



## EV & HEV Service Tools & Equipment

**CRESCENT**



6DIAGVDE



7DIAGVDE



8LNVDE



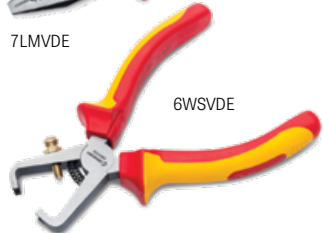
6LMVDE



7LMVDE



8LMVDE



6WSVDE



8LMVDE

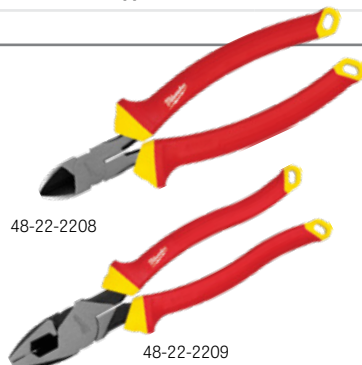
### 1000V Insulated Pliers

Item #	Description
<b>Diagonal Cutting Pliers</b>	
CRE-6DIAGVDE	6" 1000V Insulated Diagonal Pliers
CRE-7DIAGVDE	7" 1000V Insulated Diagonal Pliers
<b>Long Nose Pliers</b>	
CRE-6LNVDE	6" 1000V Insulated Long Nose Pliers
CRE-8LNVDE	8" 1000V Insulated Long Nose Pliers
<b>Linesman Pliers</b>	
CRE-6LMVDE	6" 1000V Insulated Linesman Pliers
CRE-7LMVDE	7" 1000V Insulated Linesman Pliers
CRE-8LMVDE	8" 1000V Insulated Linesman Pliers
<b>Wire Stripper Pliers</b>	
CRE-6WSVDE	6" 1000V Insulated Wire Stripper Pliers

**MILWAUKEE**

### 1000V Insulated Pliers

Item #	Length
<b>Diagonal Cutting Pliers</b>	
MLW-48-22-2208	8"
<b>Lineman's Pliers</b>	
MLW-48-22-2209	9"



48-22-2208



48-22-2209

**MILWAUKEE**

MLW-48-22-2215

### 5-Pc 1000V Insulated Hand Tool Set

- (1) Slim tip 4" screwdriver: 1/4" Cabinet
- (1) Slim tip 4" screwdriver: #2 Phillips
- (1) 9" Lineman's pliers
- (1) 8" Diagonal cutting pliers
- (1) Wire stripper & cutter - 10-20 AWG



**CATU**

**NEW**



CTU-CZ-60

### Insulated Cable Cutter

- Cuts cable up to 26mm in diameter
- Maximum opening: 30 mm

**CATU**

Made in France

CTU-MO7582D

### Entirely Insulated Magnet on Flexible Handle

- Magnet diameter: 0.24" (6mm)
- Maximum load to the magnet: 1.65 lbs (0.750 kg)
- Certified to 1000 Volt AC or 1500 Volt DC



TIT-71101

### 22" Long 1000V Insulated Flexible Inspection Mirror

- 2" mirror



**TITAN**

TIT-71100

### 22" Long 1000V Insulated Flexible Magnetic Pick-Up Tool

- 1.5 lbs magnetic capacity



**TITAN**

TIT-71103

### 9" Long 1000V Insulated Mirror with Pliable Handle

- 2" mirror



**TITAN**



# ELECTRIC & HYBRID VEHICLE SAFETY SOLUTIONS

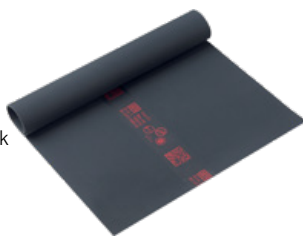
## EV & HEV Service Tools & Equipment



CTU-MP-11/11



Made in France



### Insulating Mat – Class 0

- Insulating mat for live line work and dead work
- 3.3 ft. x 3.3 ft. (1m x 1m) • Thickness: 2.2mm
- Operating voltage: 1000V AC – 1500V DC
- Low temperature folding test at -40 °C
- Operating temp.: -40°C to +55°C

CTU-MP-220

### Orange Insulating Blanket – Class 0

- Used as protection for workers operating on live lines, live parts or in the vicinity of live parts
- 3.3 ft. x 3.3 ft. (1m x 1m)
- Thickness: 1.2mm
- Operating voltage: 1000V AC – 1500V DC
- Resistance to bending at very low temperature (-40°C)
- Oil resistance and high puncture resistance
- Operating temp.: -40°C to +55°C



Made in France



Made in Germany

KNI-98 67 05

### 20" x 20" Rubber Mat, 1000V Insulated

- For added protection when working live or close to live parts
- Thickness: 1/16" (1.58mm)



Made in France

CTU-KIT-RC-TST1

### Protective Equipment Kit for Live Conductors and Connectors

- Operating voltage: 1000V AC – 1500V DC
- Includes:
  - (1) Insulating blanket, Class 0, 1m x 1m (#MP-220)
  - (4) Insulating clamps for blanket (#MP-627-D)
  - (3) Insulating caps, Class 0, 30mm x 120mm (#MP-635/30-D)
  - (3) Insulating caps, Class 0, 60mm x 180mm (#MP-635/60-D)



Made in France

CTU-ALPV-XL-D

### Locking Cover for Steering Wheel

- Up to 24.4" (62 cm)
- Transparent pocket (A5 size) allows to display a personalized message during the lock-out procedure
- Strap closure at the back with 10mm metal eyelets for inserting a padlock and self-gripping part



Made in France



### Insulating Blanket – Class 0

- Used as protection for workers operating on live parts or in the vicinity of live parts
- Operating voltage: 1,000V AC - 1,500V DC
- Acid and oil resistance
- High puncture resistance
- Gripping tape ("Velcro" type) all around the blanket for fixation or fitting with another blanket
- Operating temp. range: -40°C to +55°C

Item #	Description
CTU-MP-123	14" x 26" (0.36m x 0.66m)
CTU-MP-123/1	19.5" x 35.5" (0.5m x 0.9m)
CTU-MP-123/2	31.5" x 47" (0.8m x 1.2m)



CTU-MP-19-LOT

### 10 Colour Electrical Adhesive Tape

- Offering high dielectric strength and good mechanical protection
- Self-extinguishing
- Can be used on cables, wires of any size
- 10 rolls of 10m



Made in France



CTU-ACA-10

### "Electric Hazard" Warning Pyramid with Magnetic Base

- Cardboard cone, 5.5" (140mm) side



Made in France

CTU-AT-5005

### Safety Adhesive Signaling/Delineation Tape

- Self-adhesive PVC
- 2" x 328 ft. (50mm x 100m)



KLEIN TOOLS

KLE-58000

### CAUTION Tape, Barricade

- 3" x 200 feet (76mm x 61m)
- Made of tough, durable (2.5 mil) polyethylene
- Highly resistant to acids, alkalis and other components



# ELECTRIC & HYBRID VEHICLE SAFETY SOLUTIONS



## EV & HEV Service Tools & Equipment

**CATU**

Made in France



MP-35  
ML-35/12



MP-37

### Insulating Transparent & Flexible PVC Blanket – Class 0

- Insulating blanket for workers operating on live parts or in the vicinity of live parts
- Operating voltage: 1,000 V AC - 1,500 V DC
- Must be fixed with MP-41A70 insulating magnets or MP-41-..., or MP-62.D clamps
- Resistance to acid, oil and ozone
- Operating temp. range: -40°C to +55°C

Item #	Description
CTU-MP-35	4.25 ft. x 82 ft. (1.3m x 25m)
CTU-MP-35/12	4.25 ft. x 41 ft. (1.3m x 12.5m)
CTU-MP-37	3.5" x 82 ft. (90mm x 25m)

**CATU**



CTU-MP-41A704

### Set of 4 Magnets for Insulating Blankets

- Particularly suitable for MP-35, MP-35-12, MP-37 and MP-40 insulating blankets
- (1) hole diameter 4mm on the periphery for anchoring
- 70mm x 5mm thickness



**CATU**



CTU-KIT-VEH-V-TST

### Kit for Application in the Field of Electric and Hybrid Vehicles and Machines for Live Working

- Suitable for work in the vicinity or under voltage (maximum operating voltage 1000 V AC – 1500 V)
- Kit includes: (1) CAT III 600 V multimeter (#MX-701), rescue stick with hook, flexible mat, clamps, various caps, red insulating electric tape, cover for bare parts, "LOCAL BATTERY" warning signs, pliers, socket set, torque wrench 4-20 Nm, cable cutter, screwdriver set, mirror, magnet, brush

Each item in this set can also be purchased separately.

**CATU**

CTU-KIT-MD04R

### Rescue Kit for Working at Height

- For maximum descent height of 20m

Includes:

- (1) Hoist with 5m cord (#MO-346-R)
- (1) Anchor strap (#MO-52033)
- (1) Snap hook (#MO-54)
- (1) Descent device (#MD-02)
- (1) Descent rope (#MO-69/20-R)
- (1) Wide opening snap hook (#MO-54004)
- (1) Carrying bag (#MO-42/2)



**CATU**

Made in France

Each item in this set can also be purchased separately.



CTU-KIT-VEH

### Delineation Kit for Application in the Field of Electric & Hybrid Vehicles and Machines

- (6) Red and white ballasted boundary posts (#AL-323)
- (1) Plastic chain with red and white links, 25m (#AL-31/25)
- (2) Plastic signs, 450mm x 150mm (#AP-72)

AL-325



AL-326

### Folding Modular Safety Barrier

- Lightweight and stable 3-panel intervention barrier (AL-325), used to temporarily fence off and delimit a work area
- Light and flexible structure made of PVC tubes and panels made of 100% polyester fabric in fluorescent yellow
- Modularity: possibility to add or remove panels
- AL-326: Additional element made up of a single panel, allowing to enlarge the barrier
- Fixing by 2 junction clips (supplied)
- For indoor use

Item #	Description	Dimensions
CTU-AL-325	3-Panel Barrier	5.5 ft. x 3.25 ft. (1.71m x 1m)
CTU-AL-326	1 Panel Extension	2 ft. x 3.25 ft. (0.57m x 1m)



# ELECTRIC & HYBRID VEHICLE SAFETY SOLUTIONS

## EV & HEV Service Tools & Equipment



CTU-CS452

### Rescue Stick with Insulated Permanent Hook

- 45 kV
- 1.65m long
- Includes wall brackets (#CI-06-D)



Each item in this set can also be purchased separately.



CTU-KIT-VEH-DEP

### Head and Hand Protection Kit for Towing Services for Electric and Hybrid Vehicles and Machines

- (1) Arc-Flash protective faceshield with headband and a storage bag (#MO-286)
- (1) Pair of short insulating gloves (28cm), Class 0, 1000V AC / 1500V DC, size 10 (#CG-0-10-R-28)
- (1) Pair of cotton under-gloves (#CG-80-H)
- (1) Pair of short leather overgloves, size 10 (#CG-984-10)
- (1) Bag for protection and storage of gloves (#CG-36-1)
- (40) "DAMAGED VEHICLE" removable stickers (#AT-81)
- (1) Non-conducting safety padlock (#PP-6-38-R-Z)
- (10) Safety Tag-Out badges with warning sign (#AP-460)
- (1) Storage bag (#MO-42/2)

### High-Visibility Multi-Risk Parka with Hood for Protection Against Electric Arc

- Protection against thermal hazards of an electric arc, heat and flames, rain protection, anti-static, small splash of liquid chemicals
- Central zip with flap, adjustable belt at the waist
- 2 Chest pockets and 2 hip pockets

Item #	Size
CTU-M-883374	S
CTU-M-883377	M
CTU-M-883378	L
CTU-M-883379	XL
CTU-M-883380	2XL
CTU-M-883381	3XL



### CAT'ARC Multi-Risk Switching Jacket to Protect Against an Electric Arc

- Designed to be worn on top of the usual clothing
- Adjustable hood
- To be worn with a visor or a helmet
- Velcro® central fastening along the entire length
- Back length of 47" (121 cm)
- Visor, insulated gloves and shoes sold separately

Item #	Size
CTU-AFG-2300-S	S
CTU-AFG-2300-L	L
CTU-AFG-2300-2XL	2XL
CTU-AFG-2300-4XL	4XL



### Safety Shoes with Insulating Sole - Class 0

- Operating voltage: 1000V AC - 1500V DC
- Low-cut and textile type shoe
- Slip resistant sole
- Leather reinforcements at the front and the back
- Extra perspiration-resistant, anti-bacterial lining

Item #	Size
CTU-MV-226-40	40
CTU-MV-226-41	41
CTU-MV-226-42	42
CTU-MV-226-43	43
CTU-MV-226-44	44
CTU-MV-226-45	45
CTU-MV-226-46	46
CTU-MV-226-47	47

### Insulating Overboots - Class 1

- Operating voltage: 7,500V AC / 11,250V DC
- Meets the requirements of ASTM 1117 (20kV)
- Ideal for temporary and frequent use
- Fit perfectly over safety shoes
- 100% waterproof
- Fuel and oil resistant rubber sole promoting a superior slip resistance
- Sole pattern design avoids clogging and catching on rungs when climbing ladders
- Hot contact resistant sole to 300°C for 60 seconds
- Quick and easy to wear & remove; kick-off lug for hands free removal
- Comfortable, durable and lightweight



Item #	Size
CTU-MV-138-M	M (39-42)
CTU-MV-138-L	L (43-45)
CTU-MV-138-XL	XL (46-49)

CTU-MO-286

### Arc-Flash Protective Face Shield with Headband for Electrician

- Protective face shield against thermal effect of short-circuit electric arcs
- To wear without a helmet
- Ratchet head adjustment
- Anti-scratch and anti-fogging treatments
- Visor height: 8" (20.5 cm)





# ELECTRIC & HYBRID VEHICLE SAFETY SOLUTIONS

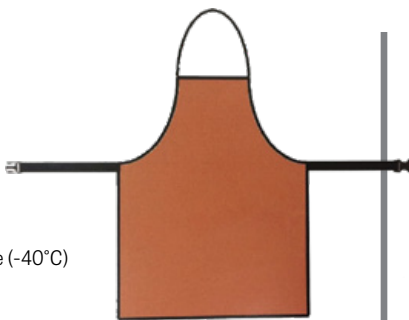


## EV & HEV Service Tools & Equipment

CTU-MV-99-INSO

### Orange Elastomer Insulating Apron – Class 0

- Operating voltage: 1000V AC – 1500V DC
- Adjustable belt strap with plastic lock
- Acid and oil resistant
- High resistance to perforation
- Can be folded at very low temperature (-40°C)
- Insulator's H x W: 65 cm x 50 cm
- Thickness: 1.2mm



### Electrical Insulating Gloves, Red – Class 0

- Includes the dielectric and conformity certificate
- Rolled edges for more comfort
- Material: Natural Latex • Length: 14"

Item #	Size
CTU-GI-01408-RR1	8 (M)
CTU-GI-01409-RR1	9 (L)
CTU-GI-01410-RR1	10 (XL)
CTU-GI-01411-RR1	11 (2XL)



### Leather Overgloves for Low Voltage Insulating Gloves

- Ensure mechanical protection for insulating gloves (Class 00 & 0)
- Resistant to flame and contact heat of 100°C for 10 seconds according to EN 407
- Velcro® adjustable cuffs

Item #	Size
CTU-CG-981-08	8
CTU-CG-981-09	9
CTU-CG-981-10	10
CTU-CG-981-11	11



### Undergloves for Insulating Gloves

- Comfortable fit, washable undergloves improve the comfort of use and hygiene of insulating gloves
- Helps protect from Latex allergies

Item #	Fits Size
CTU-CG-80-F	8
CTU-CG-80-H	9, 10, 11



CTU-CG-36-1

### Storage Case for Insulating Gloves – Class 00, 0, 1

- Made of repellent reinforced fabric for the transportation of insulating gloves in vehicles and tool boxes
- Rear loop for belt carriage and transparent pocket for instructions or identification
- Velcro fastening
- 16.5" x 7" x 2"



CTU-CG-117

### Pneumatic Tester for Insulating Gloves

- For compulsory control of insulating gloves from class 00 to 4 before use
- Checking is done by inflating the insulating gloves and immersing in water



### ANSELL GLOVE SIZING CHART

Measure the width of your hand from the base of your index finger and across your knuckles.

**Ansell**

7 / S	75mm / 3"
8 / M	88mm / 3.5"
9 / L	101mm / 4"
10 / XL	113mm / 4.5"
11 / 2XL	126mm / 5"
12 / 3XL	140mm / 5.5"

### No Returns Accepted

### 100% Natural Rubber Electrical Insulating Gloves

- 11" long gloves
- Ergonomically-designed hand-at-rest shape for less hand fatigue
- Generous flared cuff allows room for clothing and improves ventilation
- Exceeds ASTM D120 standards for tensile strength, elongation, tear & puncture resistance
- Product meets all applicable ASTM, NFPA, OSHA, CSA and EN standards



### Red Gloves, Class 0

- Max. use voltage AC/DC 1,000 / 1,500 Volt

Item #	Size
ANS-RIG011R070	7
ANS-RIG011R080	8
ANS-RIG011R090	9
ANS-RIG011R100	10
ANS-RIG011R110	11
ANS-RIG011R120	12

### Yellow Gloves, Class 0

- Max. use voltage AC/DC 1,000 / 1,500 Volt

Item #	Size
ANS-RIG011Y070	7
ANS-RIG011Y080	8
ANS-RIG011Y090	9
ANS-RIG011Y100	10
ANS-RIG011Y110	11
ANS-RIG011Y120	12

### 10" Industrial Leather Protector Gloves – Class 00, 0

- Should always be worn over Rubber Insulating Gloves to meet OSHA and ASTM standards to provide mechanical protection against cuts, abrasions and punctures
- SIZING: These leather gloves should be ordered in the same size as the Rubber Electrical Insulating Gloves

Item #	Size
ANS-RIGLV/CVR070	7
ANS-RIGLV/CVR080	8
ANS-RIGLV/CVR090	9
ANS-RIGLV/CVR100	10
ANS-RIGLV/CVR110	11
ANS-RIGLV/CVR120	12

**Ansell**



### Protective Bag with Clip

- Canvas glove bag is designed for use with Electrical Insulating Gloves

Item #	Size
ANS-RIGCVSBAG14	14"
ANS-RIGCVSBAG16	16"

**Ansell**





# ELECTRIC & HYBRID VEHICLE SAFETY SOLUTIONS

## EV & HEV Service Tools & Equipment



TBQ-4JPT

### 4-Pc Lifting Jack Pads for Tesla Models S, 3, X, Y

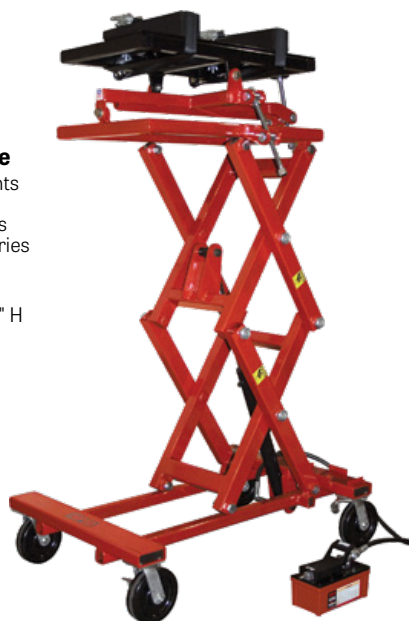
- These rubber pads are positioned under the designated Tesla lift points to prevent damage to the battery or the side rails of the vehicle when lifting
- Load capacity (4 pads): 5 ton



NRC-72850A

### 2,500 Lbs Capacity Powertrain Lift/Work Table

- Handles powertrain components like engines, transmissions, transaxle assemblies, rear ends and large electric vehicle batteries
- Air/hydraulic foot pump
- Lift height: 31" to 78"
- Overall dim.: 50" L x 33" W x 35" H
- Table size: 19" x 36"
- Saddle tilt: 15°
- Weight: 665 lbs



ATD-7478

### 2,500 Lbs Capacity Powertrain Lifting Table

- Designed to handle heavy engine, drive axle assemblies, transmissions, electric vehicle batteries and other vehicle components
- Air/hydraulic foot pump
- Capacity @ 100 psi: 2,500 lbs
- Lifting range: 33" - 77"
- Table size: 19.7" x 32"
- Table tilt: +/- 11°
- Overall dim.: 48" x 33" x 33"
- Weight: 586 lbs



Made in  
France

CTU-MO-810

### Insulating Device To Lift Up Batteries

- To lift up batteries for live working at low voltage
- To lift forklift batteries elements for maintenance operations
- Operating voltage: 1,000 V AC - 1,500 V DC
- Adjustable fixing capacity from 81mm to 118 mm
- Max. load: 507 lbs (230 kg)



OTC-1585A

### 1,250 Lbs Capacity Power Train Lift with Tilting Plate

- Ideal for engine and transaxle service
- Height range: 29-1/2" to 68-1/2"
- Weight: 372 lbs



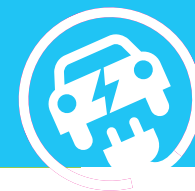
CTA-8854

### 3L Capacity ELECTRIC VEHICLE Brake Bleeding Kit

- Services various EV models, including Tesla Models X, S, 3, and Y
- Includes 36mm and 37mm brake bleeder all-metal adapters



# ELECTRIC & HYBRID VEHICLE SAFETY SOLUTIONS



## EV & HEV Service Tools & Equipment

### AUTEL MAXIEV

AUL-CDT100

#### EV Battery Discharge/Charge Unit with Wide Voltage Tests and Maintenance Modes

- Wide voltage design, suitable for discharge, charge, and activation testing of modules with different voltage levels
- Set Constant Current and Power, Charge and Discharge modes for varied applications
- Improves charging efficiency by ensuring full charge
- Optimize battery pack capacity with constant current discharge, and charge modes
- Displays single-cell maximum/minimum voltage and other data on-screen in graphs, columns, and report forms
- Issues warnings for reverse connection, over temperature, overcurrent, fan failure and overcharge
- **Charge-discharge voltage range:** 2-285V DC
- **Discharge current range:** 150A/7.2kW max.
- **Charge current range:** 100A/4.4kW max.
- **Power supply:** 110/220V AC



### EXTEQ

XTQ-E-MILLIOHM

#### E-MILLIOHM Bonding Tester

- Specialized electrical testing device used to measure very low electrical resistance, typically in the milliohm ( $m\Omega$ ) range.
- It is commonly used in applications where ensuring a strong electrical bond or connection is critical, such as in grounding systems, electrical wiring, and bonding of metal components in various industrial, automotive, and aerospace environments.

##### Key Uses:

1. **Grounding and Bonding:** Ensures low-resistance connections between different components to avoid voltage differences that could lead to safety hazards, like electrical shock or fire.
2. **Quality Control:** Verifies that wiring, connectors, and metal joints meet required resistance standards, ensuring the electrical integrity of the system.
3. **Automotive and Aerospace:** Tests electrical bonding between metal surfaces, which is essential for maintaining the functionality of electrical systems and preventing electromagnetic interference.







# ELECTRIC & HYBRID VEHICLE SAFETY SOLUTIONS

## EV & HEV Service Tools & Equipment



CTU-MS-917-L

### Detex™ Low Voltage Detector

- Operating voltage: 12-690V AC / 12-750V DC
- (7) Thresholds • Frequency: 50-60 Hz
- Continuity: 200  $\Omega$  • Polarity
- Unipolar phase identification
- Phase indication
- Completely modular and adjustable to eclipse sockets



PWP-VT750LCD

### Two-Pole Voltage Tester for Electric and Hybrid Vehicles

- Safety rated at 1000V CAT III, 600V CAT IV
- Automatically selects the correct voltage range
- AC/DC Volts: 750V
- Resistance: 0-2,000 $\Omega$  • Frequency: 30Hz-999Hz
- Continuity beeper:  $\leq 600k\Omega$  • Diode test: 0.3V-0.9V
- Single phase test voltage: 100-750V



FLU-5066006

### Fluke 1507 – Insulation Resistance Tester

- Rugged, compact advanced insulation resistance tester for electrical contractors and industrial and commercial electricians
- Automatically calculates Polarization Index and Dielectric Absorption Ratio
- Makes repetitive tests simple and easy with a Compare (Pass/Fail) function
- Voltage AC/DC: 0.1V to 600V
- Continuity: 200 mA
- Resistance: 0.01  $\Omega$  to 20.00 k $\Omega$
- Insulation test range: 0.01 M $\Omega$  to 10 G $\Omega$
- Insulation test voltages: 50V, 100V, 250V, 500V, 1000V



FLU-4691215

### Fluke 1587 FC – Insulation Tester & True RMS Multimeter

- Fluke Connect®-enabled
- PI/DAR timed ratio tests
- Insulation test range: 0.01 M $\Omega$  to 2 G $\Omega$
- Insulation test voltages: 50V, 100V, 250V, 500V, 1000V
- Voltage AC/DC: 1000V
- Capacitance, diode test, temperature, Min/Max, and frequency
- Continuity: 200 mA
- Resistance: 50 M $\Omega$



KLE-ET600

### Insulation Resistance Tester with Multimeter Test Functions

- Test voltages: 125V, 250V, 500V, 1000V
- Insulation resistance: 4000M $\Omega$
- Test lock
- Live circuit detection
- AC/DC voltage: 1000V
- Resistance: 4k $\Omega$
- True RMS • Audible continuity
- Auto-ranging, Auto-Zero
- Data hold • Min/Max value
- Bar graph
- CAT IV 600V and CAT III 1000V



PWP-PPDMM

### Automotive Digital Multimeter

- Hybrid safe CAT-IV 600V
  - Digital Volt and Ohmmeter for circuit testing
- Measures:
- AC/DC Voltage to 600V
  - Current to 10 Amps
  - Resistance/Diode/Continuity to 60M Ohms
  - Capacitance: 0.0001 $\mu$ F to 60,000 $\mu$ F
  - Frequency, duty cycle
  - Temperature from -4°F to 1,832°F (-20°C to 1,000°C)
  - Data hold, Min/Max capture, relative measurement



BSD-F00E9001013CM

### MMD 540H Hybrid Digital Multimeter

- CAT III (1,000V) safety rating for hybrid vehicle circuits
- Peak, Min/Max readings as fast as 1 millisecond
- Higher amperage test ranges, up to 20 Amps
- Inductive RPM clamp for conventional and DIS ignition systems
- Fused diagnostic test leads for safe trouble shooting (up to 20 amps)
- K-Type thermocouple for quick temperature measurement
- Trilingual users manual on CD



ESI-550

### EV & Hybrid Vehicle Insulation Tester

- Test voltages: 250V-200M $\Omega$ , 500V-200M $\Omega$ , 1000V-2000M $\Omega$
- AC voltage: 0-750V, 1V resolution
- DC voltage: 0-1000V, 1V resolution
- Resistance: 0-200 $\Omega$ , 2000 $\Omega$ , 0.1 Ohm resolution
- Insulation resistance: 200M $\Omega$ , 2000M $\Omega$ , 200k resolution
- Continuity test: Audible beep  $\leq 40\Omega$ , Test current  $\leq 200$ mA
- Auto-ranging • Large dual display
- Test Hold function • Over Range indication • CAT III 1000V



ESI-595

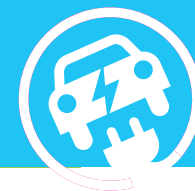
### Automotive Meter with PC Interface

- Safe for use on hybrids and EV's
- CAT III 1,000 Volt
- Max/Min function
- DC Volts: 1000V • AC Volts: 750V
- AC/DC Amps: 20A
- Ohms: 40M $\Omega$  • Capacitance: 100 $\mu$ F
- RPM 4 : 0-4,000 RPM, 12,000 RPM x 10
- RPM2/DIS: 0-4,000 RPM, 6,000 RPM x 10
- Dwell: 1, 2, 3, 4, 5, 6, 8, 10, & 12 cylinder
- Frequency: 0-5Hz, 50Hz, 500Hz, 5kHz, 30kHz
- Duty cycle: 0.1% - 99.9%
- mS pulse width: 2.0mS - 10.0mS
- Temperature: -4°F to 1400°F, -20°C to 760°C
- Continuity • Diode test



# ELECTRIC & HYBRID VEHICLE SAFETY SOLUTIONS

## EV & HEV Service Tools & Equipment



EVDIAGKIT



**AUTEL** MAXISYS

### AUL-EVDIAGKIT

#### EV Diagnostics Upgrade Kit

- Includes EVDiag Box, software, and adapters for specific vehicles to achieve battery packs diagnostics for electric vehicles
- Compatible with the MaxiSYS Ultra, MaxiSYS Ultra ADAS, MaxiSYS MS919, and MaxiSYS MS909

#### BATTERY PACK DIAGNOSTICS

- In-depth battery pack diagnostics for the most popular EV vehicles on the market including BMW, Tesla, and VW/Audi
- State of Charge and State of Health analysis for true battery condition

MSULTRA EV



MS909EV



## MS909EV & MSULTRA EV INTELLIGENT EV DIAGNOSTICS



### Intelligent EV Diagnostics Tablets

- Secure high-voltage system testing and analysis
- Advanced diagnostics for U.S., European and Asian electric, gas & diesel, and hybrid vehicles

	AUL-MS909EV	AUL-MSULTRA EV
<b>HARDWARE</b>		
Wireless Vehicle Connection	Bluetooth MaxiFash VCI	Bluetooth MaxiFash VCMI
Colour Touchscreen	10" LCD	13" LCD
Processor	2.2 GHz + 1.8 GHz Octa-Core	2.2 GHz + 1.8 GHz Octa-Core
Memory / RAM	128GB SSD / 4GB RAM	256GB SSD / 4GB RAM
Docking Station		Included
EVDiag Box	Included	Included
<b>SOFTWARE</b>		
Operating System	ANDROID 10.0	ANDROID 7.0
Split Screen Display		View Multiple Functions At Once
High-Voltage System Diagnostics	Diagrams of High-Voltage System Block	Diagrams of High-Voltage System Block
Battery Pack Diagnostics	SOC and SOH Analysis	SOC and SOH Analysis
Advanced VCMI 5-in-1 Device		VCI, Oscilloscope, Multimeter, Waveform Generator, CAN Bus Check
Secure Gateway Access	Authorized FCA Access with AutoAuth Account	Authorized FCA Access with AutoAuth Account
<b>FEATURES</b>		
Service Resets	36 Service Features	36 Service Features
Diesel (Light & Medium Duty)	Reset Diesel Emissions	Reset Diesel Emissions



# ELECTRIC & HYBRID VEHICLE SAFETY SOLUTIONS

## EV & HEV Service Tools & Equipment

COMMANDER4100



ARCTIC COMMANDER	MTC-COMMANDER4100
FEATURES	Automatic R1234YF & Hybrid
Colour Touch Screen	10"
Automatic and Manual Procedures	■
Automatic Vacuum Leak Test: Programmable	■
Printer	E-Printing Capable
Vehicle A/C System Flushing	Optional
Vacuum Pump	6 CFM
Refrigerant Identifier	■
Wi-Fi Capable	■

MSX3030 /  
MSX1234

MXHD



MAXX AIR	CPS-MSX3030	CPS-MSX1234	CPS-MXHD
FEATURES	R134A & R1234YF Hybrid/EV Compatible	R1234YF Hybrid/EV Compatible	R134A Commercial Vehicles/Hybrid/EV Compatible
Colour Touch Screen	7"	7"	7"
Printing	Wi-Fi printer capable. Thermal printer (optional).	Wi-Fi printer capable. Thermal printer (optional).	Wi-Fi printer capable. Thermal printer (optional).
Recovery Tanks	Includes 2 x 30lb. Compatible with 50lb.	Includes 1 x 30lb. Compatible with 50lb.	Includes 1 x 50lb. Compatible with 90lb.
Vacuum Pump	2 CFM	2 CFM	6 CFM
Refrigerant Identifier	■	■	■
Wi-Fi Enabled	■	■	■
Bluetooth® Enabled	■	■	■

AC1234-4

34788NI-H

AC1234-9



	ROB-AC1234-9	ROB-AC1234-4	ROB-34788NI-H
FEATURES	R1234YF & Hybrid Compatible	R1234YF & Hybrid Compatible	R134A Hybrid Compatible
Colour Display	10"	4.3" Diag.	5" x 9"
Fully Automatic Operation	■	■	■
Printer	Google Cloud Printing	Optional	Optional
A/C System Flushing	■	■	■
Refrigerant Identifier	■	■	■
Vacuum Pump	1.5 CFM	1.5 CFM	1.5 CFM
Connectivity	Incorporated Wi-Fi & Bluetooth® Technology	Wi-Fi & Bluetooth® Capable (optional kit)	Wi-Fi Capable (optional kit)

**FREE!**

Buy #ROB-AC1234-4 and obtain #ROB-30038 for free: Printer.





# ELECTRIC & HYBRID VEHICLE SAFETY SOLUTIONS



## EV & HEV Service Tools & Equipment

TRACERLINE®



HBF-TPOUV20EV

### POE-Based EV A/C Dye UV Leak Detection Kit

- Compatible with R-1234yf & R-134a
- **TP9815EV-P3:** (3) 0.25 oz (7 ml) cartridges of Electric Vehicle POE-based A/C Dye Mini-EZ™ cartridges
- **TP9845:** EZ-Ject™ dye injector
- **TP-9813:** R-134a coupler and purge fitting
- **TP19:** fluorescent dye cleaner
- **TP9831:** R-1234yf adapter



TRACERLINE®



HBF-TP9814EV-BX

### POE-Based EV A/C Dye MINI-EZ™ Injection Kit

- Compatible with R-1234yf & R-134a
- **TP9815EV-P3:** (3) 0.25 oz (7 ml) cartridges of Electric Vehicle POE-based A/C Dye Mini-EZ™ cartridges
- **TP9845:** EZ-Ject™ dye injector
- **TP-9813:** R-134a coupler and purge fitting
- **TP9831:** R-1234yf adapter
- Services up to 3 vehicles



TRACERLINE®



HBF-TP9815EV-P3

### POE-Based EV A/C Dye MINI-EZ™ Cartridges

- Compatible with R-1234yf & R-134a
- (3) 0.25 oz (7 ml) single-dose Electric Vehicle A/C dye cartridges
- Services up to 3 vehicles



TRACERLINE®



### Electric Vehicle A/C Oil & A/C Oil + UV Dye

- Compatible with R-1234yf & R-134a
- Services 1 vehicle

Item #	Description
HBF-TP100EV-5	5 oz (148 ml) Foil Pouch with POE-Based A/C Oil
HBF-TP100EVD-5	5 oz (148 ml) Foil Pouch with POE-Based A/C Oil + UV Fluorescent Dye

TP100EV-5



TP100EVD-5

TRACERLINE®



HBF-TP9812-BX

### Hybrid Vehicle/ESTER MINI-EZ™ Universal A/C Dye Injection Kit

- Uniquely blended with special additives for hybrid A/C systems
- Compatible with R-1234yf & R-134a
- **TP9811-P3:** (3) 0.25 oz (7 ml) single-dose Hybrid Vehicle/Ester A/C dye cartridges
- **TP9845:** EZ-Ject™ dye injector
- **TP-9813:** R-134a coupler and purge fitting
- **TP9831:** R-1234yf adapter
- Services up to 3 vehicles



TRACERLINE®



HBF-TP9811-P3

### Hybrid Vehicle/ESTER MINI-EZ™ Universal A/C Dye

- Uniquely blended with special additives for hybrid A/C systems
- Compatible with R-1234yf & R-134a
- (3) 0.25 oz (7 ml) single-dose Hybrid Vehicle/Ester A/C dye cartridges
- Services up to 3 vehicles



TRACERLINE®



### Hybrid Vehicle /ESTER A/C Oil & A/C Oil + UV Dye

- Compatible with R-1234yf & R-134a
- Services 1 vehicle
- Viscosity: 32 cSt/Ester

Item #	Description
HBF-TP32EH-5	5 oz (148 ml) Foil Pouch with A/C Oil
HBF-TP32EHD-5	5 oz (148 ml) Foil Pouch with A/C Oil + UV Dye

TP32EH-5



TP32EHD-5



[g2stobeq.ca](http://g2stobeq.ca)

Please contact your local Distributor  
for pricing and availability.

