



g2stobeq.ca

Q1
2026



ELECTRIC & HYBRID VEHICLE SAFETY SOLUTIONS



Brands Featured:





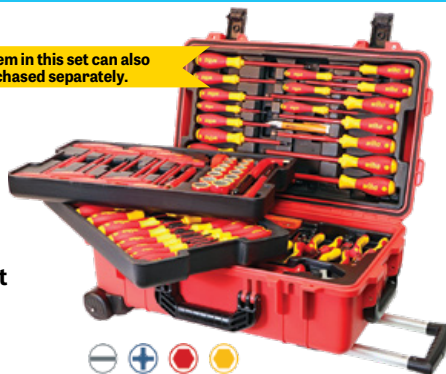
ELECTRIC & HYBRID VEHICLE SAFETY SOLUTIONS

EV & HEV Service Tools & Equipment

wiha



Each item in this set can also be purchased separately.



WIH-32800

80-Pc Insulated Tool Set in Rolling Tool Case

- Screwdrivers:
 - Slotted: 2.5mm – 10mm
 - Phillips: #0, #1, #2, #3
 - Torx®: T6-T30
 - Square: #1, #2
 - Terminal block: #1, #2
- Nut drivers: 7/32" – 7/16", 5mm – 13mm
- Sockets: 1/2" – 7/8", 13mm – 22mm
- T-Handles: 5/32" – 3/8", 4mm – 8mm • L-keys: 1/2" & 10mm • Pliers • Cutters
- Ratchet: 3/8" drive • Extension: 3/8" x 5" • Cable knife: 2" (50mm)
- 2 Meter ruler: inch/metric • Category IV voltage detector: 110V to 250V
- Rolling water tight tool case: 22" L x 13-3/4" W x 9" H • Certified to 1000 Volt AC



Each item in this set can also be purchased separately.

WIH-32876

66-Pc Insulated Tool Set

- Screwdrivers:
 - Slotted: 2mm-10mm
 - Phillips: #0, #1, #2, #3
 - Torx®: T8-T30
 - Square: #1, #2
 - Terminal block: #1, #2
- Nut drivers: 1/4" – 7/16"
- Sockets: 1/2" – 7/8", 8 – 22mm
- Hex T-Handles: 5/32" – 3/8", 4 – 8mm
- Hex L-keys: 1/2" & 10mm
- Pliers
- Cutters
- Adjustable wrench
- Ratchet: 3/8" drive
- Extension: 3/8" x 5"
- Cable knife: 2" (50mm)
- Certified to 1000 Volt AC



WIH-91890

26-Piece Insulated Essentials Tool Kit

- Screwdrivers:
 - Slotted: 3.5mm, 4.5mm, 6.5mm
 - Phillips: #1, #2
 - Torx®: T20, T25, T30
- 1/4" drive, 6 pt. sockets: 5-13mm
- 1/4" drive ratchet
- 2" & 4" extension bars
- Open end wrenches: 8mm-13mm
- 8" Tweezers • 3-Pc pliers/cutters
- 8.5" Cable stripping knife

Each item in this set can also be purchased separately.

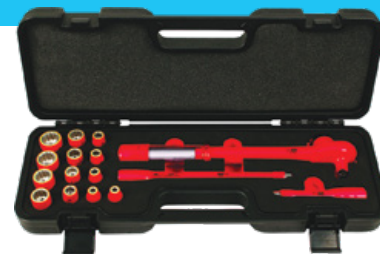
wiha



16-Pc 3/8" Drive Insulated Ratcheting Torque Wrench and Socket Sets

Sets include:

- Ratcheting torque wrench: 4-37 ft-lb (5-50 Nm)
- Metric or SAE sockets
- Extension bars: 5" & 10"
- Certified to 1000 Volt AC



Each item in this set can also be purchased separately.

WIH-30190	SAE	1/4" – 7/8"
WIH-30192	Metric	8mm – 20mm

WIH-31391

13-Pc 1/4" Drive Insulated Metric Socket Set

- Sockets: 5mm – 14mm
- Extensions: 2", 4"
- 1/4" Drive reversible ratchet
- Certified to 1000 Volt AC or 1500 Volt DC



Each item in this set can also be purchased separately.

WIH-31590

10-Pc 3/8" Drive Insulated Metric Socket Set

- Sockets: 8mm – 19mm
- Extension: 5"
- 3/8" Drive reversible ratchet
- Certified to 1000 Volt AC or 1500 Volt DC



Each item in this set can also be purchased separately.

TITAN

TIT-66100

18-Pc 1/4" Drive Metric Socket Set, 1000V Insulated

- (13) Sockets: 4-14 mm
- Extensions: 2", 3", 4", 6"
- 1/4" drive reversible ratchet with quick release



wiha



WIH-31491

16-Pc 3/8" Drive Insulated Inch/Metric Socket Set

- Inch sockets: 5/16" – 3/4"
- Metric sockets: 8mm – 19mm
- Certified to 1000 Volt AC or 1500 Volt DC



Each item in this set can also be purchased separately.

ELECTRIC & HYBRID VEHICLE SAFETY SOLUTIONS



EV & HEV Service Tools & Equipment

wiha  Made in Germany

Insulated Extensions

- Certified to 1000 Volt AC or 1500 Volt DC

WIH-12854	1/4" x 2"
WIH-12855	1/4" x 4"



TITAN



TIT-17237

7-Pc Insulated Screwdriver Set with Magnetic Tips

- Slotted: 1/8" x 3", 5/32" x 4", 7/32" x 5", 1/4" x 6"
- Phillips: #0 x 3", #1 x 4", #2 x 4"



TITAN



TIT-73277

7-Pc Insulated Precision Screwdriver Set

- Slotted: 1.5mm x 1.5", 1.8mm x 2-15/16", 2.0mm x 2-15/16", 2.5mm x 3", 3.0mm x 3"
- Phillips: #00 x 3", #0 x 3"



wiha  Made in Germany



Each item in this set can also be purchased separately.



WIH-28789

11-Pc Insulated TorqueVario-S Driver and SlimLine Blade Set

- TorqueVario-S driver: 10-50 in-lb
- SlimLine insulated blades: Slotted: 4mm, 6.5mm; Phillips: #1, #2; Square: #1, #2; Xeno: Terminal #1, #2
- Certified to 1000 Volt AC

CRESCENT



CRE-CTVDESDS

7-Pc VDE 1000V Insulated Screwdriver Set

- Slotted: 1/8" x 3", 5/32" x 4", 7/32" x 5", 1/4" x 6"
- Phillips: #0 x 3", #1 x 3", #2 x 4"



Milwaukee

Milwaukee® 1000V Insulated Tools

- Tested and certified to UL®, OSHA, VDE & GS standards
- Dual layer insulation offers visual wear indication for tool replacement
- Flame retardant & impact resistant handle and shank
- Visible ID markings



MLW-48-22-2202

3-Pc 1000V Insulated Screwdriver Set

- ECX™: #1 x 4"
- Phillips: #2 x 4"
- Slotted: 1/4" x 6"



MLW-48-22-2204

4-Pc 1000V Insulated Screwdriver Set

- Slotted: 1/4" and 3/8" – 6" and 8" long
- Phillips: #1 and #2 – 3" and 4" long



MLW-48-22-2205

4-Pc 1000V Insulated Screwdriver Set

- Slotted: 1/4" and 3/8" – 6" and 8" long
- Square: #1 and #2 – 3" and 4" long



MLW-48-22-2210

10-Pc 1000V Insulated Screwdriver Set

- ECX™: #1 x 4"
- Phillips: #1 x 3", #2 x 4", #3 x 6"
- Slotted: 1/4" x 6", 5/16" x 7", 3/8" x 8"
- Square: #1 x 3", #2 x 4", #3 x 6"



Milwaukee



1000V Insulated Slim Tip Multi-Bit Screwdrivers with Storage Pouch

48-22-2218

	MLW-48-22-2216	MLW-48-22-2217	MLW-48-22-2218
	4-in-1	8-in-1	8-in-1
Phillips	+	#2	#00, #0
Slotted	—	1/4", 3/16"	3/32", 1/8"
Security Torx®	☆	TP7, TP8, TP10, TP15	
Square	■	#2	#1, #2
ECX™	◆		#1, #2



ELECTRIC & HYBRID VEHICLE SAFETY SOLUTIONS

EV & HEV Service Tools & Equipment

wiha

Made in Germany

Each item in this set can also be purchased separately.



Insulated T-Handle Hex Screwdriver Sets

- Certified to 1000 Volt AC

WIH-33478	5-Piece	Metric: 4mm, 5mm, 6mm, 8mm, 10mm
WIH-33490	6-Piece	Inch: 5/32", 3/16", 7/32", 1/4", 5/16", 3/8"

KNIPEX

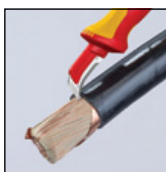
Made in Germany



KNI-98 55

1000-Volt Insulated Electrician's Dismantling Knife, 7" Long

- 1.5" fixed hook blade with guide shoe at the blade point: no damage of the conductor insulation



CTU

Made in France

Insulated Cable Cutters

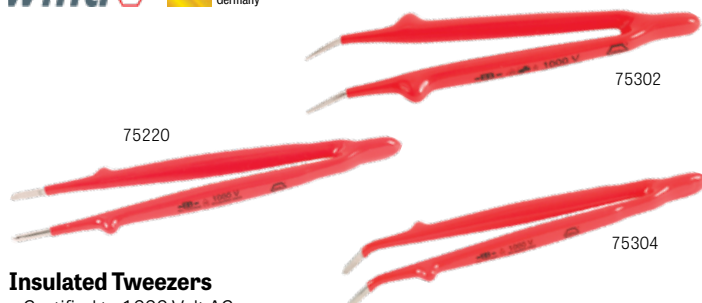
- Operating voltage: 1000V AC – 1500V DC

Item #	Length	Capacity
CTU-MO-67501	7"	15mm
CTU-MO-67502	9"	18mm



wiha

Made in Germany



Insulated Tweezers

- Certified to 1000 Volt AC

Item #	Description
WIH-75220	8" Insulated Tweezers, Serrated, Straight Blunt Tip
WIH-75302	6" Insulated Tweezers, Serrated, Angled Fine Tip
WIH-75304	8" Insulated Tweezers, Serrated, Angled Blunt Tip

KNIPEX

Made in Germany

KNI-98 99 11

17-Pc Compact Tool Set, 1000V Insulated

- 8" Combination pliers
- 6-1/4" Diagonal cutters
- 7-1/4" Cable knife
- Slotted screwdrivers: 1/8", 5/32", 7/32"
- Phillips® screwdriver: #0
- 1/2" Drive reversible ratchet
- 1/2" Drive Hex socket set: 10mm-19mm
- Extensions: 5", 10"



wiha

Made in Germany

WIH-20196

13-Pc Insulated Open End Wrench Tray Set

- 8mm, 10mm, 11mm, 12mm, 13mm, 14mm, 15mm, 16mm, 17mm, 18mm, 19mm, 22mm, 24mm
- Certified to 1000 Volt AC



Each item in this set can also be purchased separately.

wiha

Made in Germany

WIH-32999

9-Pc Insulated Pliers/Cutters Tray Set

- 9" Lineman's with crimper
- 8" Lineman's
- 6.3" & 8" Long nose
- 6.3" & 8" Diagonal cutters
- 6.3" Stripping pliers
- 7" Crimp pliers
- 8" Cable cutter



Each item in this set can also be purchased separately.

Milwaukee

MLW-48-22-2215

5-Pc 1000V Insulated Hand Tool Set

- (1) Slim tip 4" screwdriver: 1/4" Cabinet
- (1) Slim tip 4" screwdriver: #2 Phillips
- (1) 9" Lineman's pliers
- (1) 8" Diagonal cutting pliers
- (1) Wire stripper & cutter - 10-20 AWG



ELECTRIC & HYBRID VEHICLE SAFETY SOLUTIONS



EV & HEV Service Tools & Equipment

CRESCENT



6DIAGVDE



7DIAGVDE



8LNVDE



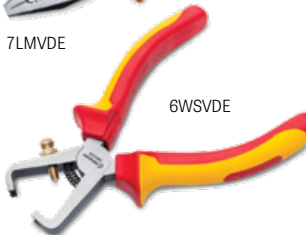
6LNVDE



7LMVDE



6LMVDE



6WSVDE



8LMVDE

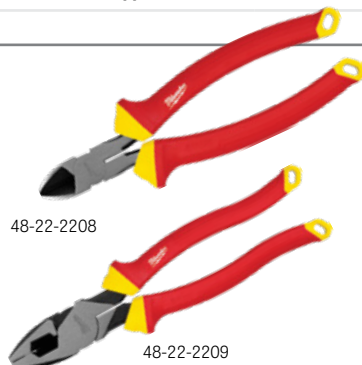
1000V Insulated Pliers

Item #	Description
Diagonal Cutting Pliers	
CRE-6DIAGVDE	6" 1000V Insulated Diagonal Pliers
CRE-7DIAGVDE	7" 1000V Insulated Diagonal Pliers
Long Nose Pliers	
CRE-6LNVDE	6" 1000V Insulated Long Nose Pliers
CRE-8LNVDE	8" 1000V Insulated Long Nose Pliers
Linesman Pliers	
CRE-6LMVDE	6" 1000V Insulated Linesman Pliers
CRE-7LMVDE	7" 1000V Insulated Linesman Pliers
CRE-8LMVDE	8" 1000V Insulated Linesman Pliers
Wire Stripper Pliers	
CRE-6WSVDE	6" 1000V Insulated Wire Stripper Pliers

MILWAUKEE

1000V Insulated Pliers

Item #	Length
Diagonal Cutting Pliers	
MLW-48-22-2208	8"
Lineman's Pliers	
MLW-48-22-2209	9"



48-22-2208

48-22-2209

CATU



CTU-CZ-60

Insulated Cable Cutter

- Cuts cable up to 26mm in diameter
- Maximum opening: 30 mm

CATU

Made in France

CTU-MO7582D

Entirely Insulated Magnet on Flexible Handle

- Magnet diameter: 0.24" (6mm)
- Maximum load to the magnet: 1.65 lbs (0.750 kg)
- Certified to 1000 Volt AC or 1500 Volt DC



TIT-71101

22" Long 1000V Insulated Flexible Inspection Mirror

- 2" mirror



TITAN

TIT-71100

22" Long 1000V Insulated Flexible Magnetic Pick-Up Tool

- 1.5 lbs magnetic capacity



TITAN

TIT-71103

9" Long 1000V Insulated Mirror with Pliable Handle

- 2" mirror



TITAN

ETA

CTA-8854

3L Capacity ELECTRIC VEHICLE Brake Bleeding Kit

- Services various EV models, including Tesla Models X, S, 3, and Y
- Includes 36mm and 37mm brake bleeder all-metal adapters





ELECTRIC & HYBRID VEHICLE SAFETY SOLUTIONS

EV & HEV Service Tools & Equipment

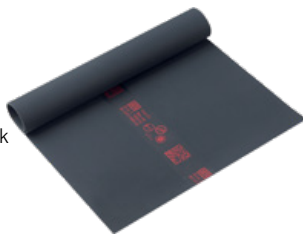


CTU-MP-11/11



Insulating Mat – Class 0

- Insulating mat for live line work and dead work
- 3.3 ft. x 3.3 ft. (1m x 1m) • Thickness: 2.2mm
- Operating voltage: 1000V AC – 1500V DC
- Low temperature folding test at -40 °C
- Operating temp.: -40°C to +55°C



CTU-MP-220

Orange Insulating Blanket – Class 0

- Used as protection for workers operating on live lines, live parts or in the vicinity of live parts
- 3.3 ft. x 3.3 ft. (1m x 1m)
- Thickness: 1.2mm
- Operating voltage: 1000V AC – 1500V DC
- Resistance to bending at very low temperature (-40°C)
- Oil resistance and high puncture resistance
- Operating temp.: -40°C to +55°C

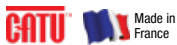


KNI-98 67 05



20" x 20" Rubber Mat, 1000V Insulated

- For added protection when working live or close to live parts
- Thickness: 1/16" (1.58mm)



CTU-KIT-RC-TST1

Protective Equipment Kit for Live Conductors and Connectors

- Operating voltage: 1000V AC – 1500V DC
- Includes:
- (1) Insulating blanket, Class 0, 1m x 1m (#MP-220)
- (4) Insulating clamps for blanket (#MP-627-D)
- (3) Insulating caps, Class 0, 30mm x 120mm (#MP-635/30-D)
- (3) Insulating caps, Class 0, 60mm x 180mm (#MP-635/60-D)



CTU-KIT-VEH

Delineation Kit for Application in the Field of Electric & Hybrid Vehicles and Machines

- (6) Red and white ballasted boundary posts (#AL-323)
- (1) Plastic chain with red and white links, 25m (#AL-31/25)
- (2) Plastic signs, 450mm x 150mm (#AP-72)



Each item in this set can also be purchased separately.



CTU-ACA-10

"Electric Hazard" Warning Pyramid with Magnetic Base

- Cardboard cone, 5.5" (140mm) side



CTU-AT-5005

Safety Adhesive Signaling/Delineation Tape

- Self-adhesive PVC
- 2" x 328 ft. (50mm x 100m)



KLE-58000

CAUTION Tape, Barricade

- 3" x 200 feet (76mm x 61m)
- Made of tough, durable (2.5 mil) polyethylene
- Highly resistant to acids, alkalis and other components



CTU-KIT-VEH-V-TST

Kit for Application in the Field of Electric and Hybrid Vehicles and Machines for Live Working

- Suitable for work in the vicinity or under voltage (maximum operating voltage 1000 V AC – 1500 V)
- Kit includes: (1) CAT III 600 V multimeter (#MX-701), rescue stick with hook, flexible mat, clamps, various caps, red insulating electric tape, cover for bare parts, "LOCAL BATTERY" warning signs, pliers, socket set, torque wrench 4-20 Nm, cable cutter, screwdriver set, mirror, magnet, brush

ELECTRIC & HYBRID VEHICLE SAFETY SOLUTIONS



EV & HEV Service Tools & Equipment

CTU-CS452

Rescue Stick with Insulated Permanent Hook

- 45 kV
- 1.65m long
- Includes wall brackets (#CI-06-D)



Each item in this set can also be purchased separately.



CTU-KIT-VEH-DEP

Head and Hand Protection Kit for Towing Services for Electric and Hybrid Vehicles and Machines

- (1) Arc-Flash protective faceshield with headband and a storage bag (#MO-286)
- (1) Pair of short insulating gloves (28cm), Class 0, 1000V AC / 1500V DC, size 10 (#CG-0-10-R-28)
- (1) Pair of cotton under-gloves (#CG-80-H)
- (1) Pair of short leather overgloves, size 10 (#CG-984-10)
- (1) Bag for protection and storage of gloves (#CG-36-1)
- (40) "DAMAGED VEHICLE" removable stickers (#AT-81)
- (1) Non-conducting safety padlock (#PP-6-38-R-Z)
- (10) Safety Tag-Out badges with warning sign (#AP-460)
- (1) Storage bag (#MO-42/2)

High-Visibility Multi-Risk Parka with Hood for Protection Against Electric Arc

- Protection against thermal hazards of an electric arc, heat and flames, rain protection, anti-static, small splash of liquid chemicals
- Central zip with flap, adjustable belt at the waist
- 2 Chest pockets and 2 hip pockets

Item #	Size
CTU-M-883374	S
CTU-M-883377	M
CTU-M-883378	L
CTU-M-883379	XL
CTU-M-883380	2XL
CTU-M-883381	3XL



CAT'ARC Multi-Risk Switching Jacket to Protect Against an Electric Arc

- Designed to be worn on top of the usual clothing
- Adjustable hood
- To be worn with a visor or a helmet
- Velcro® central fastening along the entire length
- Back length of 47" (121 cm)
- Visor, insulated gloves and shoes sold separately

Item #	Size
CTU-AFG-2300-S	S
CTU-AFG-2300-L	L
CTU-AFG-2300-2XL	2XL
CTU-AFG-2300-4XL	4XL



Safety Shoes with Insulating Sole - Class 0

- Operating voltage: 1000V AC - 1500V DC
- Low-cut and textile type shoe
- Slip resistant sole
- Leather reinforcements at the front and the back
- Extra perspiration-resistant, anti-bacterial lining

Item #	Size
CTU-MV-226-40	40
CTU-MV-226-41	41
CTU-MV-226-42	42
CTU-MV-226-43	43
CTU-MV-226-44	44
CTU-MV-226-45	45
CTU-MV-226-46	46
CTU-MV-226-47	47

Insulating Overboots - Class 1

- Operating voltage: 7,500V AC / 11,250V DC
- Meets the requirements of ASTM 1117 (20kV)
- Ideal for temporary and frequent use
- Fit perfectly over safety shoes
- 100% waterproof
- Fuel and oil resistant rubber sole promoting a superior slip resistance
- Sole pattern design avoids clogging and catching on rungs when climbing ladders
- Hot contact resistant sole to 300°C for 60 seconds
- Quick and easy to wear & remove; kick-off lug for hands free removal
- Comfortable, durable and lightweight



Item #	Size
CTU-MV-138-M	M (39-42)
CTU-MV-138-L	L (43-45)
CTU-MV-138-XL	XL (46-49)

CTU-MO-286

Arc-Flash Protective Face Shield with Headband for Electrician

- Protective face shield against thermal effect of short-circuit electric arcs
- To wear without a helmet
- Ratchet head adjustment
- Anti-scratch and anti-fogging treatments
- Visor height: 8" (20.5 cm)





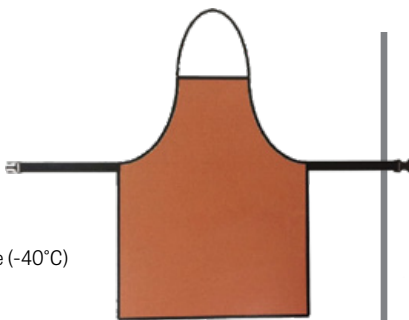
ELECTRIC & HYBRID VEHICLE SAFETY SOLUTIONS

EV & HEV Service Tools & Equipment

CTU-MV-99-INS

Orange Elastomer Insulating Apron – Class 0

- Operating voltage: 1000V AC – 1500V DC
- Adjustable belt strap with plastic lock
- Acid and oil resistant
- High resistance to perforation
- Can be folded at very low temperature (-40°C)
- Insulator's H x W: 65 cm x 50 cm
- Thickness: 1.2mm



Electrical Insulating Gloves, Red – Class 0

- Includes the dielectric and conformity certificate
- Rolled edges for more comfort
- Material: Natural Latex • Length: 14"

Item #	Size
CTU-GI-01408-RR	8 (M)
CTU-GI-01409-RR	9 (L)
CTU-GI-01410-RR	10 (XL)
CTU-GI-01411-RR	11 (2XL)



Leather Overgloves for Low Voltage Insulating Gloves

- Ensure mechanical protection for insulating gloves (Class 00 & 0)
- Resistant to flame and contact heat of 100°C for 10 seconds according to EN 407
- Velcro® adjustable cuffs

Item #	Size
CTU-CG-981-08	8
CTU-CG-981-09	9
CTU-CG-981-10	10
CTU-CG-981-11	11



Undergloves for Insulating Gloves

- Comfortable fit, washable undergloves improve the comfort of use and hygiene of insulating gloves
- Helps protect from Latex allergies

Item #	Fits Size
CTU-CG-80-F	8
CTU-CG-80-H	9, 10, 11



CTU-CG-36-1

Storage Case for Insulating Gloves – Class 00, 0, 1

- Made of repellent reinforced fabric for the transportation of insulating gloves in vehicles and tool boxes
- Rear loop for belt carriage and transparent pocket for instructions or identification
- Velcro fastening
- 16.5" x 7" x 2"



CTU-CG-117

Pneumatic Tester for Insulating Gloves

- For compulsory control of insulating gloves from class 00 to 4 before use
- Checking is done by inflating the insulating gloves and immersing in water



ANSELL GLOVE SIZING CHART

Measure the width of your hand from the base of your index finger and across your knuckles.

Ansell

7 / S	75mm / 3"
8 / M	88mm / 3.5"
9 / L	101mm / 4"
10 / XL	113mm / 4.5"
11 / 2XL	126mm / 5"
12 / 3XL	140mm / 5.5"

No Returns Accepted

100% Natural Rubber Electrical Insulating Gloves

- 11" long gloves
- Ergonomically-designed hand-at-rest shape for less hand fatigue
- Generous flared cuff allows room for clothing and improves ventilation
- Exceeds ASTM D120 standards for tensile strength, elongation, tear & puncture resistance
- Product meets all applicable ASTM, NFPA, OSHA, CSA and EN standards



Red Gloves, Class 0

- Max. use voltage AC/DC 1,000 / 1,500 Volt

Item #	Size
ANS-RIG011R070	7
ANS-RIG011R080	8
ANS-RIG011R090	9
ANS-RIG011R100	10
ANS-RIG011R110	11
ANS-RIG011R120	12

Yellow Gloves, Class 0

- Max. use voltage AC/DC 1,000 / 1,500 Volt

Item #	Size
ANS-RIG011Y070	7
ANS-RIG011Y080	8
ANS-RIG011Y090	9
ANS-RIG011Y100	10
ANS-RIG011Y110	11
ANS-RIG011Y120	12

10" Industrial Leather Protector Gloves – Class 00, 0

- Should always be worn over Rubber Insulating Gloves to meet OSHA and ASTM standards to provide mechanical protection against cuts, abrasions and punctures
- SIZING: These leather gloves should be ordered in the same size as the Rubber Electrical Insulating Gloves

Item #	Size
ANS-RIGLV/CVR070	7
ANS-RIGLV/CVR080	8
ANS-RIGLV/CVR090	9
ANS-RIGLV/CVR100	10
ANS-RIGLV/CVR110	11
ANS-RIGLV/CVR120	12



Ansell



Protective Bag with Clip

- Canvas glove bag is designed for use with Electrical Insulating Gloves

Item #	Size
ANS-RIGCVSBAG14	14"
ANS-RIGCVSBAG16	16"

Ansell



ELECTRIC & HYBRID VEHICLE SAFETY SOLUTIONS



EV & HEV Service Tools & Equipment

NORCO

NRC-72850A

2,500 Lbs Capacity Powertrain Lift/Work Table

- Handles powertrain components like engines, transmissions, transaxle assemblies, rear ends and large electric vehicle batteries
- Air/hydraulic foot pump
- Lift height: 31" to 78"
- Overall dim.: 50" L x 33" W x 35" H
- Table size: 19" x 36"
- Saddle tilt: 15°
- Weight: 665 lbs



ATD

ATD-7478

2,500 Lbs Capacity Powertrain Lifting Table

- Designed to handle heavy engine, drive axle assemblies, transmissions, electric vehicle batteries and other vehicle components
- Air/hydraulic foot pump
- Capacity @ 100 psi: 2,500 lbs
- Lifting range: 33" - 77"
- Table size: 19.7" x 32"
- Table tilt: +/- 11°
- Overall dim.: 48" x 33" x 33"
- Weight: 586 lbs



OTC

OTC-1585A

1,250 Lbs Capacity Power Train Lift with Tilting Plate

- Ideal for engine and transaxle service
- Height range: 29-1/2" to 68-1/2"
- Weight: 372 lbs



PWP-PPEVTEST

EV Tester

- ECE-R100 compliant multimeter combines the 3 essential EV testing tools into one device:
 - CATIII/1000V & CATIV/600V rated voltmeter
 - 1kV Insulation tester
 - True milliohm meter
- Insulation resistance test up to 1000 VDC and 200GΩ with PI, DAR calculation
- Bonding test (Kelvin 4-Wire type) up to 1 Amp
- 4 wire resistance up to 40 ohms, down to 0.001mΩ
- 2 wire resistance up to 40k Ohms
- Wire length calculator: determines wire length by wire gauge
- Remote "Test" button on test leads allows for easy two-handed testing
- Diode test with smart mode testing • Capacitance test up to 1000μF
- Temp. up to 400 °C, 752 °F
- Internal memory allows storage of 400 test results
- Wireless connection via Power Probe Link App

POWER PROBE

NEW



POWER PROBE



PWP-VT750LCD

Two-Pole Voltage Tester for Electric and Hybrid Vehicles

- Safety rated at 1000V CAT III, 600V CAT IV
- Automatically selects the correct voltage range
- AC/DC Volts: 750V
- Resistance: 0-2,000Ω • Frequency: 30Hz-999Hz
- Continuity beeper: ≤600KΩ • Diode test: 0.3V-0.9V
- Single phase test voltage: 100-750V

CATU

Made in France

CTU-MS-917-L

Detex™ Low Voltage Detector

- Operating voltage: 12-690V AC/12-750V DC
- (7) Thresholds • Frequency: 50-60 Hz
- Continuity: 200 Ω • Polarity
- Unipolar phase identification
- Phase indication
- Completely modular and adjustable to eclipse sockets



MIDTRONICS

NEW

MID-XIM-100

Electric Vehicle Immobilizer

- Designed for First Responders, Law Enforcement and Technicians across all vehicle types
- Helps to prevent unintended EV movement
- Ultra-bright LEDs ensure instant visual confirmation of secure connection:
 - Green = Immobilized,**
 - Red = Caution**
- Universal fit works in any charge port: supports J1772/Type 1 and NACS charge ports
- Maintains power for essential functions: windows / seats / lights
- Integrated pry bar: Quickly access obstructed charge ports





ELECTRIC & HYBRID VEHICLE SAFETY SOLUTIONS

EV & HEV Service Tools & Equipment

FLUKE FLUKE CONNECT

FLU-4977402

1550C FC – Fluke Connect® 5 kV Digital Insulation Tester

- Remote operation lets you spend as little time as possible in potentially hazardous zones
- Real-time live graph on your phone
- Automatic calculation of DAR/PI
- Selectable test voltages in 50V steps from 250V to 1000V, and 100V steps above 1000V
- CAT III 1000 V, CAT IV 600V safety rating
- Measurements can be stored in up to 99 memory locations
- Capacitance and leakage current measurement
- Ramp function for breakdown testing
- Resistance measurements up to 2 TΩ
- Timer settings up to 99 minutes for timed tests



FLUKE

FLU-5066006

Fluke 1507 – Insulation Resistance Tester

- Rugged, compact advanced insulation resistance tester for electrical contractors and industrial and commercial electricians
- Automatically calculates Polarization Index and Dielectric Absorption Ratio
- Makes repetitive tests simple and easy with a Compare (Pass/Fail) function
- Voltage AC/DC: 0.1V to 600V
- Continuity: 200 mA
- Resistance: 0.01 Ω to 20.00 kΩ
- Insulation test range: 0.01 MΩ to 10 GΩ
- Insulation test voltages: 50V, 100V, 250V, 500V, 1000V



FLUKE FLUKE CONNECT

FLU-4691215

Fluke 1587 FC – Insulation Tester & True RMS Multimeter

- Fluke Connect®-enabled
- PI/DAR timed ratio tests
- Insulation test range: 0.01 MΩ to 2 GΩ
- Insulation test voltages: 50V, 100V, 250V, 500V, 1000V
- Voltage AC/DC: 1000V
- Capacitance, diode test, temperature, Min/Max, and frequency
- Continuity: 200 mA
- Resistance: 50 MΩ



KLE-ET600

Insulation Resistance Tester with Multimeter Test Functions

- Test voltages: 125V, 250V, 500V, 1000V
- Insulation resistance: 4000MΩ
- Test lock
- Live circuit detection
- AC/DC voltage: 1000V
- Resistance: 4kΩ
- True RMS • Audible continuity
- Auto-ranging, Auto-Zero
- Data hold • Min/Max value
- Bar graph
- CAT IV 600V and CAT III 1000V

KLEIN TOOLS



PWP-PPDMM

Automotive Digital Multimeter

- Hybrid safe CAT-IV 600V
- Digital Volt and Ohmmeter for circuit testing
- Measures:
 - AC/DC Voltage to 600V
 - Current to 10 Amps
 - Resistance/Diode/Continuity to 60M Ohms
 - Capacitance: 0.0001 μF to 60,000 μF
 - Frequency, duty cycle
 - Temperature from -4°F to 1,832°F (-20°C to 1,000°C)
- Data hold, Min/Max capture, relative measurement

POWER PROBE



BOSCH

BSD-F00E9001013CM

MMD 540H Hybrid Digital Multimeter

- CAT III (1,000V) safety rating for hybrid vehicle circuits
- Peak, Min/Max readings as fast as 1 millisecond
- Higher amperage test ranges, up to 20 Amps
- Inductive RPM clamp for conventional and DIS ignition systems
- Fused diagnostic test leads for safe trouble shooting (up to 20 amps)
- K-Type thermocouple for quick temperature measurement
- Trilingual users manual on CD



ESI-550

EV & Hybrid Vehicle Insulation Tester

- Test voltages: 250V-200MΩ, 500V-200MΩ, 1000V-2000MΩ
- AC voltage: 0-750V, 1V resolution
- DC voltage: 0-1000V, 1V resolution
- Resistance: 0-200Ω, 2000Ω, 0.1 Ohm resolution
- Insulation resistance: 200MΩ, 2000MΩ, 200k resolution
- Continuity test: Audible beep ≤40Ω, Test current ≤200mA
- Auto-ranging
- Large dual display
- Test Hold function • Over Range indication
- CAT III 1000V

ES



ESI-595

Automotive Meter with PC Interface

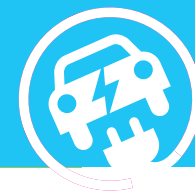
- Safe for use on hybrids and EVs
- CAT III 1,000 Volt
- Max/Min function
- DC Volts: 1000V • AC Volts: 750V
- AC/DC Amps: 20A
- Ohms: 40MΩ • Capacitance: 100uF
- RPM 4 : 0-4,000 RPM, 12,000 RPM x 10
- RPM2/DIS: 0-4,000 RPM, 6,000 RPM x 10
- Dwell: 1, 2, 3, 4, 5, 6, 8, 10, & 12 cylinder
- Frequency: 0-5Hz, 50Hz, 500Hz, 5kHz, 30kHz
- Duty cycle: 0.1% - 99.9%
- mS pulse width: 2.0mS - 10.0mS
- Temperature: -4°F to 1400°F, -20°C to 760°C
- Continuity • Diode test

ES



ELECTRIC & HYBRID VEHICLE SAFETY SOLUTIONS

EV & HEV Service Tools & Equipment



AUTEL MAXISYS

AUL-EVDIAGKIT

EV Diagnostics Upgrade Kit

- Includes EVDiag Box, software, and adapters for specific vehicles to achieve battery packs diagnostics for electric vehicles
- Compatible with the MaxiSYS Ultra, MaxiSYS Ultra ADAS, MaxiSYS MS919, and MaxiSYS MS909

BATTERY PACK DIAGNOSTICS

- In-depth battery pack diagnostics for the most popular EV vehicles on the market including BMW, Tesla, and VW/Audi
- State of Charge and State of Health analysis for true battery condition

EVDIAGKIT



MSULTRA EV

MS909EV



MS909EV & MSULTRA EV INTELLIGENT EV DIAGNOSTICS



Intelligent EV Diagnostics Tablets

- Secure high-voltage system testing and analysis
- Advanced diagnostics for U.S., European and Asian electric, gas & diesel, and hybrid vehicles

	AUL-MS909EV	AUL-MSULTRA EV
HARDWARE		
Wireless Vehicle Connection	Bluetooth MaxiFash VCI	Bluetooth MaxiFash VCMI
Colour Touchscreen	10" LCD	13" LCD
Processor	2.2 GHz + 1.8 GHz Octa-Core	2.2 GHz + 1.8 GHz Octa-Core
Memory / RAM	128GB SSD / 4GB RAM	256GB SSD / 4GB RAM
Docking Station		Included
EVDiag Box	Included	Included
SOFTWARE		
Operating System	ANDROID 10.0	ANDROID 7.0
Split Screen Display		View Multiple Functions At Once
High-Voltage System Diagnostics	Diagrams of High-Voltage System Block	Diagrams of High-Voltage System Block
Battery Pack Diagnostics	SOC and SOH Analysis	SOC and SOH Analysis
Advanced VCMI 5-in-1 Device		VCI, Oscilloscope, Multimeter, Waveform Generator, CAN Bus Check
Secure Gateway Access	Authorized FCA Access with AutoAuth Account	Authorized FCA Access with AutoAuth Account
FEATURES		
Service Resets	36 Service Features	36 Service Features
Diesel (Light & Medium Duty)	Reset Diesel Emissions	Reset Diesel Emissions



ELECTRIC & HYBRID VEHICLE SAFETY SOLUTIONS

EV & HEV Service Tools & Equipment

COMMANDER4100



ARCTIC COMMANDER	MTC-COMMANDER4100
FEATURES	Automatic R1234YF & Hybrid
Colour Touch Screen	10"
Automatic and Manual Procedures	■
Automatic Vacuum Leak Test: Programmable	■
Printer	E-Printing Capable
Vehicle A/C System Flushing	Optional
Vacuum Pump	6 CFM
Refrigerant Identifier	■
Wi-Fi Capable	■

MSX3030 /
MSX1234

MXHD



MAXX AIR	CPS-MSX3030	CPS-MSX1234	CPS-MXHD
FEATURES	R134A & R1234YF Hybrid/EV Compatible	R1234YF Hybrid/EV Compatible	R134A Commercial Vehicles/Hybrid/EV Compatible
Colour Touch Screen	7"	7"	7"
Printing	Wi-Fi printer capable. Thermal printer (optional).	Wi-Fi printer capable. Thermal printer (optional).	Wi-Fi printer capable. Thermal printer (optional).
Recovery Tanks	Includes 2 x 30lb. Compatible with 50lb.	Includes 1 x 30lb. Compatible with 50lb.	Includes 1 x 50lb. Compatible with 90lb.
Vacuum Pump	2 CFM	2 CFM	6 CFM
Refrigerant Identifier	■	■	■
Wi-Fi Enabled	■	■	■
Bluetooth® Enabled	■	■	■

AC1234-4

34788NI-H

AC1234-9



	ROB-AC1234-9	ROB-AC1234-4	ROB-34788NI-H
FEATURES	R1234YF & Hybrid Compatible	R1234YF & Hybrid Compatible	R134A Hybrid Compatible
Colour Display	10"	4.3" Diag.	5" x 9"
Fully Automatic Operation	■	■	■
Printer	Google Cloud Printing	Optional	Optional
A/C System Flushing	■	■	■
Refrigerant Identifier	■	■	■
Vacuum Pump	1.5 CFM	1.5 CFM	1.5 CFM
Connectivity	Incorporated Wi-Fi & Bluetooth® Technology	Wi-Fi & Bluetooth® Capable (optional kit)	Wi-Fi Capable (optional kit)

FREE!

Buy #ROB-AC1234-4 and obtain #ROB-30038 for free: Printer.



ELECTRIC & HYBRID VEHICLE SAFETY SOLUTIONS



EV & HEV Service Tools & Equipment

TRACERLINE®



HBF-TPOUV20EV

POE-Based EV A/C Dye UV Leak Detection Kit

- Compatible with R-1234yf & R-134a
- **TP9815EV-P3:** (3) 0.25 oz (7 ml) cartridges of Electric Vehicle POE-based A/C Dye Mini-EZ™ cartridges
- **TP9845:** EZ-Ject™ dye injector
- **TP-9813:** R-134a coupler and purge fitting
- **TP19:** fluorescent dye cleaner
- **TP9831:** R-1234yf adapter



TRACERLINE®



HBF-TP9814EV-BX

POE-Based EV A/C Dye MINI-EZ™ Injection Kit

- Compatible with R-1234yf & R-134a
- **TP9815EV-P3:** (3) 0.25 oz (7 ml) cartridges of Electric Vehicle POE-based A/C Dye Mini-EZ™ cartridges
- **TP9845:** EZ-Ject™ dye injector
- **TP-9813:** R-134a coupler and purge fitting
- **TP9831:** R-1234yf adapter
- Services up to 3 vehicles



TRACERLINE®



HBF-TP9815EV-P3

POE-Based EV A/C Dye MINI-EZ™ Cartridges

- Compatible with R-1234yf & R-134a
- (3) 0.25 oz (7 ml) single-dose Electric Vehicle A/C dye cartridges
- Services up to 3 vehicles



TRACERLINE®



Electric Vehicle A/C Oil & A/C Oil + UV Dye

- Compatible with R-1234yf & R-134a
- Services 1 vehicle

Item #	Description
HBF-TP100EV-5	5 oz (148 ml) Foil Pouch with POE-Based A/C Oil
HBF-TP100EVD-5	5 oz (148 ml) Foil Pouch with POE-Based A/C Oil + UV Fluorescent Dye

TP100EV-5



TP100EVD-5

TRACERLINE®



HBF-TP9812-BX

Hybrid Vehicle/ESTER MINI-EZ™ Universal A/C Dye Injection Kit

- Uniquely blended with special additives for hybrid A/C systems
- Compatible with R-1234yf & R-134a
- **TP9811-P3:** (3) 0.25 oz (7 ml) single-dose Hybrid Vehicle/Ester A/C dye cartridges
- **TP9845:** EZ-Ject™ dye injector
- **TP-9813:** R-134a coupler and purge fitting
- **TP9831:** R-1234yf adapter
- Services up to 3 vehicles



TRACERLINE®



HBF-TP9811-P3

Hybrid Vehicle/ESTER MINI-EZ™ Universal A/C Dye

- Uniquely blended with special additives for hybrid A/C systems
- Compatible with R-1234yf & R-134a
- (3) 0.25 oz (7 ml) single-dose Hybrid Vehicle/Ester A/C dye cartridges
- Services up to 3 vehicles



TRACERLINE®



Hybrid Vehicle /ESTER A/C Oil & A/C Oil + UV Dye

- Compatible with R-1234yf & R-134a
- Services 1 vehicle
- Viscosity: 32 cSt/Ester

Item #	Description
HBF-TP32EH-5	5 oz (148 ml) Foil Pouch with A/C Oil
HBF-TP32EHD-5	5 oz (148 ml) Foil Pouch with A/C Oil + UV Dye

TP32EH-5



TP32EHD-5



g2stobeq.ca

Please contact your local Distributor
for pricing and availability.

