

NEW

TOOLSHOP

WHAT'S NEW IN THIS CATALOGUEPage
7**Milwaukee**



\$336.05

**M12 FUEL™
1/2" X 18"
Bandfile
- Tool Only
(2482-20)**

*Available February 1st



\$336.05

**M12 FUEL™
3/8" X 13"
Bandfile
- Tool Only
(2483-20)**

*Available February 1st



**M12™
Rivet Tool**

**- Tool Only (2550-20)
\$347.45**

- Kit (2550-22) \$546.45



**M18 FUEL™ 1/4"
Blind Rivet Tool
w/ ONE-KEY™**

**- Tool Only (2660-20)
\$1196.15**

- Kit (2660-22CT) \$1524.55



**M18 FUEL™ 1/4"
Lockbolt Tool
w/ ONE-KEY™**

**- Tool Only
(2661-20)
\$1765.05**



NEW!
**Milwaukee Flex
Head Ratchet**

ITEM #	SIZE	LENGTH	PRICE
48-22-9007	1/4"	6"	\$60.75
48-22-9009	1/4"	9"	\$70.85
48-22-9039	3/8"	9"	\$81.15
48-22-9041	3/8"	12"	\$93.75
48-22-9051	1/2"	11"	\$106.05
48-22-9052	1/2"	18"	\$118.55

**47-Pc 1/2" Drive
Ratchet & Socket
Set with PACKOUT™
Low-Profile
Organizer
(48-22-9487)
\$388.65**



**16oz Dead Blow
Ball Peen Hammer
(48-22-9140)**



**28oz Dead
Blow Hammer
(48-22-9150)**



**32oz Dead Blow
Ball Peen Hammer
(48-22-9141)**



**48oz Dead
Blow Hammer
(48-22-9151)**

Page
26ALT-KWC625 **\$81³⁵****8 Watt COB LED
Corded Work Light**

- 500 lumens
- 25 ft. 18/2 SJTW cord
- Magnet or hook mountable
- Waterproof: IP65
- Impact rating: IK07

Page
28ALT-KWR700T **\$115⁷⁵****Rechargeable COB LED
Foldable Slim Work Light**

- 70-700 lumens
- Top 120 lumens LED flash light
- Dimmer switch
- Rotates 180°
- IP54 rainproof
- Battery level/charge status indicator
- Strong magnet & hook
- Rubberized handle
- USB-C charging cable included

Page
30STM-61530 **67⁵⁵****Syclone® Jr. Ultra-Compact
USB Rechargeable LED Worklight**

- 2" L x 2.25" W x 1.14" D
- Lumens: 210/85 • Runtime: 3.75/8.5 hrs
- 360° rotating body • Magnetic base
- IPX4 water resistant • 2m impact resistant
- USB charge cord

Page
40MLW-2117-21 **\$132²⁵****Rechargeable Neck Light**

- Lumens: 400 • Runtime: 8+ hrs
- 2 modes to manage output
- Light head with 130° of vertical rotation
- Ergonomic, sweat resistant band
- Dust and water resistant • 6 ft. impact resistant
- Includes USB-C cable & REDLITHIUM™ USB 3.0 battery

Page
50**USB-Link™ 3 –
Vehicle Communication Interface (VCI)**

- Connects to your PC, tablet, or smart phone.
- The included USB cable gives techs the ability to directly connect to a device when working in the field or during signal interruptions.

Vehicle Network Protocol Support:

- CAN FD / J1939 FD / ISO15765 FD - 250K, 500K, 1M b/s with auto baud detection (3 simultaneous channels)
- Single wire CAN (SWCAN)
- ISO 11898-3 Fault Tolerant CAN (FTCAN)
- Diagnostics Over Internet Protocol (DoIP)
- J1708
- J1850 VPW (Class 2)
- J1850 PWM (SCP)
- ISO 9141 / KWP2000 (ISO 14230) K/L line
- ALDL 9600 and 8192 baud
- ATEC 160 baud

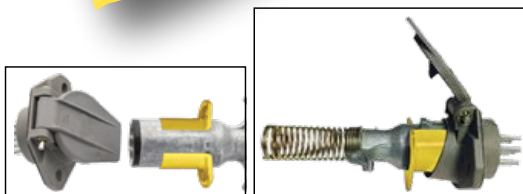
Operating System Compatibility:

- iOS • Android™ • Windows®

Compatible with following softwares:

Detroit Diesel Diagnostic Link; CAT Electronic Technician (On-Highway only); Cummins Insite; International - ServiceMAXX Fleet Pro; Hino eXplorer; Volvo PTT; VCAD Elite Mack/Volvo; V-MAC Service Tools; Allison DOC® For PC-Service Tool - Protocols supported: J1939, J1708/J1587, and J1850; Allison DOC® For Fleets (1000/2000) - Protocols supported: J1939, J1850; Allison DOC® For Fleets (3000/4000) - Protocols supported: J1939, J1708/J1587; Eaton ServiceRanger; Bendix ACom; WABCO Toolbox; Freightliner ServiceLink; International ABS; International DLB; International Intune; International IPC v2.02; PACCAR DAVIE4

Item #	Connection
MPS-121052	Bluetooth® & Wi-Fi
MPS-121054	Wired

Page
52**Ken-Tool®****\$22³⁵**

KEN-92000

2-Pc Pigtail Plug Safety Shims™

- Lights stay on and won't flicker during travel
- Prevents ABS lights from coming on because of a poor plug connection

Page
55**Lisle**LIS-28800 **\$145¹⁵****3-30 Volts DC Dual Polarity Digital Test Light with Load Tester**

- Works as a regular test light and when you push the button on the tool it applies an 800mA load at 12V DC to easily check for voltage drop on circuits
- 48" cord with heavy-duty alligator clamp for secure connections
- Not computer safe with load applied. Not for use on airbags.

Page
55**Astro**AST-7762 **\$39⁹⁵****Locking Pliers Circuit Tester Light**

- A simple test light with locking pliers ground clamp
- Lock onto grounds easier without them easily ripping off
- 12 ft. recoil ground cord
- Wire O.D: 4mm • Bulb: 12V3W • Amp: 0.45A

Page
63**TOOL AID®**
PROFESSIONAL AUTOMOTIVE TOOLSSGT-21200 **\$66⁰⁵****Clamp Probe Set**

- Designed to allow a lone technician to test for voltage drop on top battery posts and many other testing applications
- Its hands-free operation is a useful diagnostic tool when a third hand is needed
- Works with standard 4mm banana plugs
- Probe swivels and adjusts in height to test where you need it
- Works great for testing recessed connections

Page
64**STEELMAN^{PRO}**STE-61082 **\$661⁴⁵****Wireless ChassisEAR® Diagnostic Device Kit**

- High powered wireless stethoscope specifically designed to pinpoint squeaks, rattles, and any other troublesome and errant noises across a vehicle's engine, axles, and chassis
- Ideal for diagnosing faulty fuel injectors, bearings, gears, suspensions, transmissions, differentials and CV joints, and under hoods
- 4 independent transmitters for monitoring multiple locations
- 50-foot signal range

Page
73

Milwaukee

MLW-3697-22 **\$646⁵⁵****M18™ Hammer Drill/Driver & Impact Driver Combo Kit**

- 1/2" Hammer Drill/Driver (#2904-20):
 - 1,400 in-lb
 - 0-2,100 RPM
 - 0-33,000 BPM
 - Auto Stop™ control mode
- 1/4" Hex Impact Driver (#2953-20):
 - 2,000 in-lb
 - 0-3,900 RPM
 - 0-4,400 IPM
 - 4-mode drive control
- (2) M18™ XC5.0 5Ah batteries
- (1) 18V/12V multi-voltage charger

Page
75

Milwaukee

**M12™ Low Profile Ratchets (Bare Tool)**

Item #	Drive	Features	Torque	Speed	
MLW-2568-20	1/4"	<ul style="list-style-type: none"> • High Speed • Extended Reach • Can Be Used Manually 	35 ft-lb (Up to 80 ft-lb manual torque)	0-450 RPM	\$339.75
MLW-2569-20	3/8"	<ul style="list-style-type: none"> • High Speed • Extended Reach • Can Be Used Manually 	35 ft-lb	0-450 RPM	\$360.65

Page
75

Milwaukee

MLW-49-16-2569 **\$39⁴⁵****M12 FUEL™ Extended Reach High Speed Ratchet Protective Boot**

- Specifically designed for use with the M12 FUEL™ 1/4" & 3/8" Extended Reach High Speed Ratchets (2568-20 and 2569-20)

Page
75

Milwaukee

MLW-2569-21 **\$404⁶⁵****3/8" Drive M12 FUEL™ Extended Reach High Speed Ratchet Kit**

- Max. torque: 35 ft-lb
- 0-450 RPM
- Can be used manually without engaging the tool's motor (up to 120 ft-lb of manual torque)
- (1) 12V M12™ CP2.0 battery
- (1) Charger

Page
82Astro **3/8" 1/2"****ONYX Palm Impact Wrenches**

- Palm impact access • Remote throttle
- Jumbo hammer • 8,500 RPM
- 20" flexible hose with swivel ends and remote throttle means wherever your hand and arm can fit, you can now impact
- 3.46" impact head length, reactionless design means impact can be gripped with only a few fingers

Item #	Drive	Max. Torque	
AST-1831	3/8"	445 ft-lb	\$243.65
AST-1830	1/2"	445 ft-lb	\$243.65

Page
83AIRCAT
PNEUMATIC TOOLS™**1/2" Impact Wrench**

- 2-year warranty



Item #	Housing	Loosening Torque	Max. Torque Reverse	Weight	dBA	
ACA-1125	Composite	1,250 ft-lb	1,000 ft-lb	3.8 lbs	87	\$406.95

Page
88**Air Ratchets**

Item #	Features	Drive	Torque	RPM	
IRC-1211MAX-D3	High Speed	3/8"	66 ft-lb	625	\$349.95
IRC-1211MAX-D4	High Speed	1/2"	66 ft-lb	625	\$349.95

Page
92

IRC-320PG **\$216⁹⁵**
Slim Profile Pencil Grinder
 • 1/8" collet
 • 56,000RPM

Page
93

IRC-140EP **\$238²⁵**
5.5" Long Engraving Pen with Rubber Grip
 • 11,400 BPM
 • Precision on even the hardest surfaces, from alloys to brittle ceramics

Page
96

AST-49804 **\$32⁵⁵**
0.498 Shank Air Hammer 1/2" Bolt Buster
 • Features a 3/4" hex for wrenching on while you hammer on the socket and bolt to bust it free



AST-49805 **\$61⁰⁵**
0.498 Shank Air Hammer Pickle Fork Ball Joint Separator
 • Size: 15/16"

Page
102

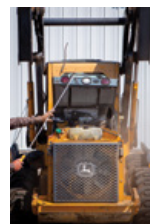
AST-3SB40 **\$21⁶⁵**
360° High Flow Air Swivel Connector
 • Enjoy more power and RPM
 • 1.5x the body size of traditional swivels with 2x the air passageway size • 1/4" NPT inlet

Page
104

LIS-88500 **\$55¹⁵**
Radiator Genie® - Water & Air Cleaning Wands
 • For high efficiency cooling systems, all types of radiators, and other hard-to-reach places
 • Adjustable pressure and working width
 • Interchangeable air fitting comes with M style connector, but can be used with any style

Page
104

LIS-88600 **\$157¹⁵**
Radiator Genie® Industrial - 2-in-1 Water & Air Cleaning Wand
 • For high efficiency cooling systems on large industrial equipment
 • 50" extra-long wand for hard to reach places
 • Adjustable pressure and working width
 • Interchangeable air fitting comes with M style connector, but can be used with any style



NEW

IN THIS CATALOGUE

January - March 2023

Page
122**Premium Grade
Drill Bit Set**

- Sizes increments by 1/64ths



Item #	Count	Description	Size Range	
KNK-4KK12SP	4-Piece	1/2" Reduced Shank	9/16" - 1"	\$352.25

Page
124KNK-3KK4SR **\$269⁸⁵****3-Pc Step Drill Bit & Reamer Set**

- 5/16" - 9/16", 9/16" - 13/16", 13/16" - 1-1/16"
- 90° notch point starts holes easily
- 5 hole enlargement steps
- 3/8" shank with 3 flats

Page
125KNK-10KK7-LHSQX **\$147⁶⁵****10-Pc Left Hand Screw Machine Drill
& Square Extractor Set**

- Stubby length drill bits:
1/8", 3/16", 1/4", 5/16", 3/8"
- Square Extractors:
SQE1, SQE2, SQE3, SQE4, SQE5
- 135° split point and 3 flats on the shanks

Page
132

wiha

Made in
GermanyEach item in this set can also
be purchased separately.WIH-91890 **\$904⁵⁵****26-Piece Insulated
Essentials Tool Kit**

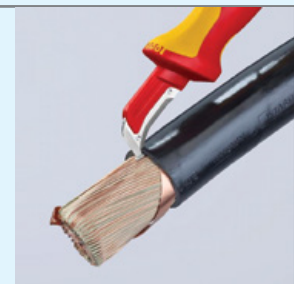
- Screwdrivers:
 - Slotted: 3.5mm, 4.5mm, 6.5mm
 - Phillips: #1, #2
 - Torx®: T20, T25, T30
- 1/4" drive, 6 pt. sockets: 5-13mm
- 1/4" drive ratchet • 2" & 4" extension bars
- Open end wrenches: 8mm-13mm • 8" Tweezers
- 3-Pc pliers/cutters • 8.5" Cable stripping knife

Page
132

KNIPEX

Made in
GermanyKNI-98 55 **\$99⁸⁵****1000-Volt Insulated Electrician's
Dismantling Knife, 7" Long**

- 1.5" fixed hook blade with guide shoe at the blade point:
no damage of the conductor insulation



Page
171**Split Beam Flexible Head Click Torque Wrenches**

- Unique design does not require returning to zero before storage
- Quick adjustment • 15° swing arc
- 1 year limited warranty

Item #	Drive	Torque	Head Style	
TBQ-TWSB100F	3/8"	20-100 ft-lb	Flexible Head	\$206.25
TBQ-TWSB250F	1/2"	40-250 ft-lb	Flexible Head	\$256.25

Page
171TBQ-TWSB600F **\$687⁴⁵****3/4" Drive Split Beam Click Type Extendable Torque Wrench with Detachable Ratchet**

- 200-600 ft-lb
- Quick adjustment
- Push-through square drive ratchet head
- 1 year limited warranty

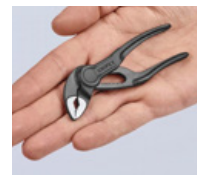
Page
197LAN-1489 **\$93⁶⁵****26" Long Large Internal Snap Ring Pliers**

- Used on GM 5L40, 5L50, 6L45, 6L50, 6L80 and 6L90 and some BMW transmissions to remove large internal snap ring

Page
183**KNIPEX Pliers Wrench**

- Perfect for gripping, holding, pressing and bending
- Smooth, parallel jaws with high degree of pressure
- One-handed slide adjustment
- Pinch guard prevents fingers from being pinched

Item #	Length	Hex	Adjustments	
KNI-86 04 100	4"	3/4" (21mm)	10	\$85.75

Page
183**Cobra® High-Tech Water Pump Pliers**

- Works on square, hex, round and flat workpieces
- Gripping surfaces with hardened teeth
- One-handed slide adjustment
- Self-locking on pipes and nuts
- Pinch guard prevents fingers from being pinched

Item #	Length	Hex	Pipe	Adjustm.	
KNI-87 00 100	4"	1" (28mm)	1" (28mm)	11	\$59.55

Page
203**5" Long Mini Pocket Pry Bars**

- 3/16" diameter steel blade

Item #	Description	
LAN-853-06-1	Straight Tip	\$10.95
LAN-853-06-3	Angled Tip	\$10.95
LAN-853-06-2ST	2-Pc Set: Straight Tip & Angled Tip	\$21.45

Homak®

TOOL STORAGE

**NEW
NOUVEAU**

**RS
PRO**

RS PRO 8-DRAWER POWER SERVICE CART

CHARIOT DE SERVICE RS PRO À
8 TIROIRS AVEC BARRE D'ALIMENTATION



**100 LBS
DRAWER CAPACITIES**

**LIFT LATCH
DRAWER PULLS**

**NON-SLIP
PVC DRAWER LINER**

**UV PROTECTIVE
FINISH**

**RELIABLE SMOOTH
BALL BEARING
SLIDES**

**DEDICATED SECURITY
COMPARTMENT WITH
POWER STRIP**

**OVERALL DIMENSIONS:
40.5" W x 26.8" D x 42.5" H
WEIGHT: 319 Lbs**

**CAPACITÉ DES TIROIRS:
100 LBS**

**POIGNÉES DE TIROIR À
LOQUET VERS LE HAUT**

**DOUBLURE DE TIROIR EN
PVC ANTIDÉRAPANTE**

**FINI À
PROTECTION UV**

**GLISSIÈRES
À ROULEMENT À BILLES
FACILES ET FLUIDES**

**COMPARTIMENT DE
SÉCURITÉ DÉDIÉ AVEC
BARRE D'ALIMENTATION**

**DIMENSIONS HORS TOUT:
40.5" L x 26.8" P x 42.5" H
POIDS: 319 Lb**



\$1894.⁹⁵

AVAILABLE IN
DISPONIBLE DANS
CES COULEURS

BK
BL
RD
GR

HOM-BK06044080
MIDNIGHT BLACK
NOIR "MIDNIGHT"

HOM-BL06044080
RALLY SPORT BLUE
BLEU "RALLY SPORT"

HOM-RD06044080
FURY RED
ROUGE "FURY"

HOM-GR06044080
BATTLESHIP GRAY
GRIS "BATTLESHIP"



**DEDICATED
CORDLESS TOOL DRAWER
WITH POWER STRIP**

**TIROIR DÉDIÉ AUX
OUTILS SANS FIL AVEC
BARRE D'ALIMENTATION**

Page
232

AME-14401 **\$557⁴⁵**
**44-Ton Heavy Duty
 Pin Style Jack Stands with
 Wheels and Handle (Pair)**

- 22 tons per stand
- Wheels and 2-pc handle for easy placement and maneuverability
- Min. height: 13"
- Max. height: 20"

Page
256

LIS-50240 **\$46⁷⁵**
Magnetic Funnel Holder

- Translucent funnel holder accommodates various style and size funnels and stores the funnel without a mess

Page
276

TOBEQ™ Professional Workshop Presses

- Fully welded construction for exceptional strength and durability
- Double speed pump with built-in safety overload valve
- Large pressure gauge filled with glycerin for easy reading
- Polycarbonate guard provides maximum protection and clear view
- 15 and 20-Ton presses delivered with a V-block set
- 30, 50, 75 and 100-Ton presses delivered with a pin set and a V-block set

Item #	Cap.	Press	Min./Max. Work Height	Ram Stoke	Press Bed D x W	Weight
TBQ-SP15000	Bench Press 15-Ton	Hydr.	6-5/16" x 18-1/8" (160.5 x 461mm)	6-1/4" (160mm)	4-3/4" x 19-11/16" (120 x 500mm)	168 lbs (76 kg)
TBQ-SP20000	20-Ton	Hydr.	12-1/2" x 47-3/16" (318 x 1198mm)	7-1/4" (185mm)	5-3/16" x 20-1/16" (132 x 510mm)	238 lbs (108 kg)
TBQ-SP30000	30-Ton	Hydr.	16-1/16" x 50-11/16" (408 x 1288mm)	6-11/16" (170mm)	5-1/2" x 21-1/16" (140 x 535mm)	416 lbs (188.5 kg)
TBQ-SP50000	50-Ton	Hydr.	14-15/16" x 53-1/2" (379 x 1359mm)	7-7/8" (200mm)	8-1/8" x 28-3/4" (207 x 730mm)	687 lbs (311.5 kg)
TBQ-SP75000	75-Ton	Air/ Hydr.	18-7/16" x 46-9/16" (468 x 1182mm)	9-13/16" (250mm)	8-9/16" x 31-1/2" (217 x 800mm)	1098 lbs (498 kg)
TBQ-SP100000	100-Ton	Air/ Hydr.	18-1/2" x 46-1/16" (470 x 1170mm)	11-13/16" (300mm)	10-9/16" x 31" (268 x 787mm)	1689 lbs (766 kg)

On all TOBEQ™
Workshop PressesPage
272

MLW-2845-20 **\$929⁴⁵**
M18™ Carry-On™ Power Supply

- Delivers 3600W/1800W for aggressive 15A applications with (4) M18™ batteries (sold separately)
- Run demanding tools like table saws, compressors, and pipe threaders
- Pure sine wave inverter protects sensitive electronics
- Integrated 3A standard simultaneous M18™ charger
- 66 dBA • 28 lbs • 15" L x 12" W x 14" H
- 3-year warranty

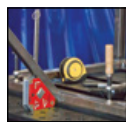
Page
291

Black Cable Ties

- Heat stable to 250°F and UV resistant

Item #	Length	Tensile	Qty	
MAY-MB5-40HS-C	5"	40 lbs	100	\$4.15
MAY-MB5-40HS-M	5"	40 lbs	1000	\$33.05
MAY-MB7-50HS-C	7"	50 lbs	100	\$7.85
MAY-MB7-50HS-M	7"	50 lbs	1000	\$66.65
MAY-MB8-40HS-C	8"	40 lbs	100	\$7.15
MAY-MB8-40HS-M	8"	40 lbs	1000	\$60.05
MAY-MB11-50HS-C	11"	50 lbs	100	\$11.25
MAY-MB11-50HS-D	11"	50 lbs	500	\$52.05
MAY-MB14-50HS-C	14"	50 lbs	100	\$13.55
MAY-MB14-50HS-D	14"	50 lbs	500	\$62.65
MAY-MB14-120HS-C	14"	120 lbs	100	\$24.75



Page
320**ECLIPSE****Quick Holding Magnetic Welding Clamps with On/Off Switch**

- High strength magnets ensure secure clamping
- Switchable style ensures easy precise adjustment: turn the magnet OFF or at the midpoint position when setting up, turn ON when you're ready to work
- The fast & easy way to hold metal workpieces at 45°, 90°
- Ideal for round and square tubing, angle, and flat stock

Item #	Angles	Dimensions	Pull Force*	
ECL-QHCSS	45°, 90°	111 x 92 x 29mm	88 lbs	\$108.05
ECL-QHCSL	45°, 90°	152 x 130 x 35mm	165 lbs	\$178.45

* Magnetic force is based on the longest side of magnet with 10mm thick steel.

**ECLIPSE****90° Fixed Magnetic Welding Clamps with On/Off Switch**

- Two ON/OFF switches for independent operation
- Machined flat and V-surfaces are ideal for round and square tubing, angle, and flat stock

Item #	Angles	Dimensions	Pull Force*	
ECL-FWCSS	90°	152 x 152 x 38mm	121 lbs	\$317.85
ECL-FWCSS	90°	197 x 197 x 48mm	265 lbs	\$582.85

* Magnetic force is based on 10mm thick steel.

**ECLIPSE****Inside and Outside Welding Clamps**

- Hold and position sheet metal, round pipes, square, angled or flat stock
- Use mounting holes to link two magnets together for use as fixturing elements
- Use hex hole on magnet for breakaway leverage

Item #	Angles	Dimensions	Pull Force	
ECL-IOWCC (Pack of 2)	30°, 60°, 90°	75.5 x 52 x 14mm	20 lbs	\$74.55
	30°, 60°, 90°	125 x 85 x 18mm	33 lbs	
ECL-IOWCL	30°, 60°, 90°	165 x 110 x 20mm	40 lbs	\$60.95

NOTE: Must be used for tack welding only and removed before completing weld.

Page
308**Lisle**LIS-83220 **\$15²⁵****Windshield Molding Clip Removal Tool**

- Can also be used to remove metal clips on under hood cowl

Page
309**Astro**AST-PRN2 **\$996⁶⁵****1/2" Capacity Automatic Rivet Nut Setting Kit - Metric & SAE**

- Automated operation. One pull of the trigger sets and unthreads the tool from rivet nuts up to M12 and 1/2".
- Includes 10 mandrels/nosepieces in sizes: M5, M6, M8, M10, M12, 10-24, 1/4", 5/16", 3/8", 1/2"
- 4,270 lbs of instant air-hydraulic pulling force
- Up to 7mm of adjustable stroke length

Page
329**MUELLER KUEPS**MUK-460 300 **\$66⁵⁵**
Universal Multi-Cleaner

- Works great on brakes, exhausts, etc...

Includes:

- (1) Handle
- (1) 40 x 110mm brush
- (1) 50 x 110mm brush

Page
331**TOOL AID**
PROFESSIONAL AUTOMOTIVE TOOLSSGT-65300 **\$35³⁵****Metric In-Line Brake Pad Gauge**

- In-line style allows use without removing the wheels on many vehicles
- Can measure both internal and external brake pads
- Calibrated for 6mm backing plate

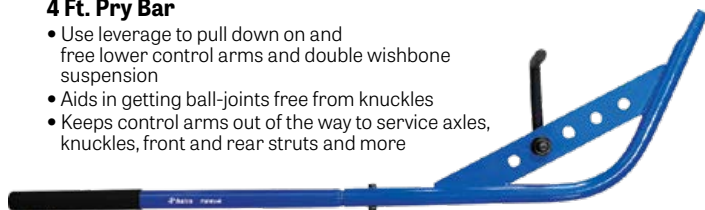
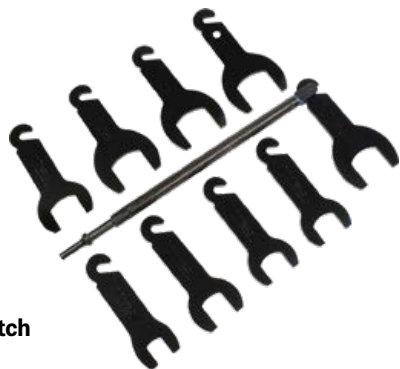


Page
352**TIGER TOOL**  Made in CanadaTGR-90153 **\$650⁹⁵****2-1/2" King Pin Clearance Plate**

- For use in conjunction with the King Pin Press (#90150)
- This adaptor will allow the #90150 to service 2-1/2" straight and tapered king pins

Page
358 **Astro**AST-78914 **\$110⁷⁵****Lower Control Arm
4 Ft. Pry Bar**

- Use leverage to pull down on and free lower control arms and double wishbone suspension
- Aids in getting ball-joints free from knuckles
- Keeps control arms out of the way to service axles, knuckles, front and rear struts and more

Page
362LIS-43350 **\$326⁵⁵****10-Pc Pneumatic Fan Clutch
Wrench Set**

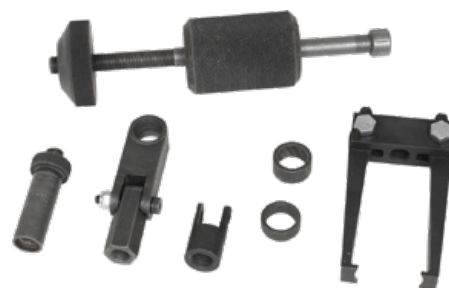
- Set includes 9 driving wrenches that fit Ford, GM, VW, BMW, Chrysler and International
- Sizes: 7/8", 32mm, 36mm, 40mm Thin, 47mm, 1-7/8", 2", 52mm, and 2-1/8"

Page
363LIS-59350 **\$49⁰⁵****Stretch Belt Tool for Ford 3.5L & 3.7L**

- Used to install the main stretch belt on extra deep double pulleys
- Works on 2011 and newer Ford 3.5L EcoBoost and 3.7L engines, as well as 2019 and newer GM 5.3L and 6.2L engines

Page
371**MASTER KIT**CTA-2857L **\$97²⁵****5-Pc Master Cam Locking Kit**

- Holds camshafts in position during timing belt replacement
- Services many makes, including Fiat, Ford, Honda, Hyundai, Mazda, Mitsubishi, Nissan, Saab, Subaru, Toyota, Volvo, etc.
- Works on a wide variety of Single Cam, Dual Cam & Quad Cam Overhead engines

Page
376LIS-40740 **\$326⁵⁵****Cummins and Duramax
Diesel Injector Puller Kit**

- **Applications:** Duramax 2001- 2010, LB7, LLY, LBZ and LMM. 2011 and newer LML engines. Cummins 2003 to 2018 5.9L and 6.7L.

Page
389LIS-64180 **\$85⁸⁵****Actuator Motor Wrench Set**

- Toothless, infinite ratchet and hinged handle design make it easier to remove and replace fasteners on small, electric HVAC motors
- The ratchet can be flipped to switch from clockwise to counterclockwise drive
- Includes 5.5mm, 7mm, 8mm sockets and 1/4" square drive adapter

Page
16**SOLAR**
CHARGE IT!SOL-4506 **\$74⁰⁵****6V/12V Smart Charger**

- Charging Amps: 6A/2A
- Automatic operation
- Charges multiple battery types
- Smart clamp technology
- Polarity protection
- Soft start mode for deeply discharged batteries

Page
54**POWER PROBE****Power Probe 3
Circuit Tester**

- Applies power or ground for functional component testing
- DC voltmeter indicators with active feedback
- Voltage & polarity testing
- 12-24 Volt range
- Bad ground indicator
- Continuity tester
- Short circuit indicator
- Audible & visual indicators
- Cable: 20 ft. (6m)

Item #	Colour	
PWP-PP3CSRED	Red	\$183.35
PWP-PP3CSBLK	Black	\$183.35
PWP-PP3CSBLU	Blue	\$183.35
PWP-PP3CSGRN	Green	\$183.35
PWP-PP3CSCARB	Carbon Fiber	\$143.65
PWP-PP3CSCAMO	Camo	\$183.35
PWP-PP3CSFIRE	Fire	\$183.35

Page
135**KLEIN TOOLS**KLE-ET600 **\$303⁶⁵****Insulation Resistance Tester with
Multimeter Test Functions**

- Test voltages: 125V, 250V, 500V, 1000V
- Insulation resistance: 4000MΩ
- Test lock
- Live circuit detection
- AC/DC voltage: 1000V
- Resistance: 4kΩ
- True RMS
- Audible continuity
- Auto-ranging, Auto-Zero
- Data hold
- Min/Max value
- Bar graph
- CAT IV 600V and CAT III 1000V

January - March 2023

Page
171**Micrometer Adjustable
Torque Wrenches, Dual Scale**

Item #	Drive	Torque	Nm	Length	
CDI-1501MRMH	1/4"	20-150 in-lb	2.8-15.3	10.15"	\$178.45
CDI-752MFRMH	3/8"	5-75 ft-lb	10.2-98.3	16"	\$194.15
CDI-2502MRMH	3/8"	30-250 in-lb	4.0-27.7	11.25"	\$184.55
CDI-7502MRMH	3/8"	100-750 in-lb	14.1-81.9	16"	\$194.15
CDI-10002MRMH	3/8"	150-1000 in-lb	9.8-110.2	16"	\$194.15
CDI-1503MFRMH	1/2"	20-150 ft-lb	34-197	19"	\$223.25
CDI-10005MFRMH	1"	200-1000 ft-lb	305-1322	70"	\$1666.65

CDI TORQUE
PRODUCTSPage
109**REELCRAFT®****Low Pressure
Spring Retractable
Air/Water Reel**

Item #	Hose Length x I.D.	Max. Work Pressure	NPT(M) Hose Outlet	NPT(F) Reel Inlet	
Premium Duty					
• Compact reel with all-steel construction • Guide arm adjusts to 2 positions					
RFT-4435 OLP	35 ft. x 1/4"	300 psi	1/4"	3/8"	\$386.45

Page
117**IR** Ingersoll Rand.IRC-1814TIN **\$107⁹⁵****6-Pc TiN-Coated
Carbide Burr Kit**

- Shank: 1/8"
- Head diameter: 1/4"
- Kit includes:
Cylindrical flat end; Radius cylindrical;
Radius tree; Pointed tree; Oval; Ball

Page
201**CRESCENT®**CRE-CHFENG40 **\$36⁰⁵****2.5 Lb (40 oz)
Fiberglass Engineer Hammer**Page
219**SUNEX®**
TOOLSSUN-3909 **\$325⁹⁵****10 Ton Capacity
Hydraulic Gear Puller**

- Provides up to 10 ton of pulling force with hydraulic ram
- Makes 8 different pulling combinations for total versatility

Page
225**OTC**OTC-7503HD **\$249⁸⁵****10 Ton Capacity Universal Heavy Duty
Tie Rod and Ball Joint Remover**

- For use on a variety of cars, trucks, SUVs and heavy-duty vehicles
- 3" jaw spread and 4" reach for a wider variety of applications and larger vehicles
- Forcing screw: 3/4"-10, 6.5" long
- Interchangeable tips including cone, flat and cup for multiple applications
- The tool will also remove pitman arms and can be used in many pulling situations that require a 2 jaw puller on other vehicles types and machinery

Page
237**NORCO****20-Ton Capacity Pair of Truck Ramps**

- 10 ton each ramp
- Telescopic 34" T-handle

Item #	Max. Tread Width	L x W x H	Ship Weight	
NRC-82019	10"	48.25" x 12.625" x 9"	204 lbs	\$1243.75
NRC-82020	16"	50.5" x 18.375" x 9.25"	346 lbs	\$1743.75



Page
240ATD-7495 **\$115⁷⁵****2-Ton Power Puller**

- Leverage: 32:1
- Maximum pull: 6 ft.
- Cable: 3/16"
- Releases load one notch at a time

ATD-7496 **\$170⁸⁵****4-Ton Power Puller**

- Leverage: 34:1
- Maximum pull: 6 ft.
- Cable: 1/4"
- Releases load one notch at a time

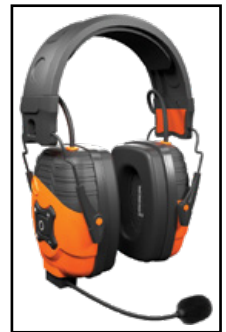
Page
254JDI-JDI-20EV-B **\$1307⁸⁵****20-Gallon Oil & Fluid Evacuator with Transparent Bowl**

- Applications: oil, coolant, transmission fluid, brake fluid, differential oil, and power steering fluid
- 2-gallon heat-resistant, transparent bowl to check quantity and quality of oil prior to discharging into the tank
- 7 ft. suction hose
- Six suction probes for most applications
- Three "OE Style" evacuator adapters
- 10 ft. quick disconnect evacuation hose
- Sight tube for quick indication of fluid level

Page
266ISO-IT-85 **\$37⁵⁵****ISOtunes Boom Microphone**

- Only compatible with LINK 2.0 (#IT-48)
- Noise-reducing microphone attachment for clearer calls in loud environments
- Adjustable boom allows for a custom fit and comes with a replacement windscreen

#ISO-IT-48 shown with #ISO-IT-45 microphone (sold separately).

Page
291**Black Cable Ties**

- UV stabilized

Item #	Length	Tensile	Qty	
ATD-20418	18"	120 lbs	25	\$17.85
ATD-20425	25"	175 lbs	25	\$22.85
ATD-20436	36"	175 lbs	25	\$25.55

Page
309

AST-PRN1 **\$421⁴⁵**
3/8" Capacity Pneumatic Rivet Nut Setting Kit - Metric & SAE

- Includes 8 mandrels/nosepieces in sizes: M4, M5, M6, M8, M10, 1/4", 5/16", 3/8"
- 2,680 lbs of instant air-hydraulic pulling force
- Max. capacity: M10 (3/8") steel and aluminum rivet nuts, M6 (1/4") stainless steel rivet nuts

