



g2stobeq.ca

Q3  
2024

# ELECTRIC & HYBRID VEHICLE SAFETY SOLUTIONS



Brands Featured:





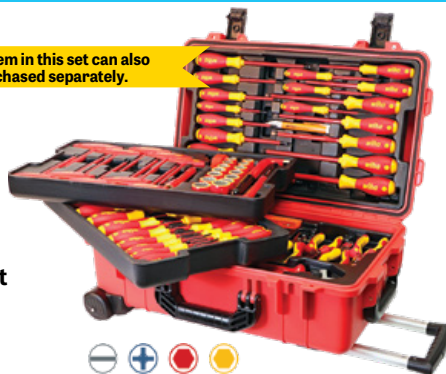
# ELECTRIC & HYBRID VEHICLE SAFETY SOLUTIONS

## EV & HEV Service Tools & Equipment

**wiha** 

 Made in Germany

Each item in this set can also be purchased separately.



WIH-32800

### 80-Pc Insulated Tool Set in Rolling Tool Case

- Screwdrivers:
  - Slotted: 2.5mm – 10mm
  - Phillips: #0, #1, #2, #3
  - Torx®: T6-T30
  - Square: #1, #2
  - Terminal block: #1, #2
- Nut drivers: 7/32" – 7/16", 5mm – 13mm
- Sockets: 1/2" – 7/8", 13mm – 22mm
- T-Handles: 5/32" – 3/8", 4mm – 8mm • L-keys: 1/2" & 10mm • Pliers • Cutters
- Ratchet: 3/8" drive • Extension: 3/8" x 5" • Cable knife: 2" (50mm)
- 2 Meter ruler: inch/metric • Category IV voltage detector: 110V to 250V
- Rolling water tight tool case: 22" L x 13-3/4" W x 9" H • Certified to 1000 Volt AC



Each item in this set can also be purchased separately.

WIH-32876

### 66-Pc Insulated Tool Set

- Screwdrivers:
  - Slotted: 2mm-10mm
  - Phillips: #0, #1, #2, #3
  - Torx®: T8-T30
  - Square: #1, #2
  - Terminal block: #1, #2
- Nut drivers: 1/4" – 7/16"
- Sockets: 1/2" – 7/8", 8 – 22mm
- Hex T-Handles: 5/32" – 3/8", 4 – 8mm
- Hex L-keys: 1/2" & 10mm
- Pliers
- Cutters
- Adjustable wrench
- Ratchet: 3/8" drive
- Extension: 3/8" x 5"
- Cable knife: 2" (50mm)
- Certified to 1000 Volt AC



WIH-91890

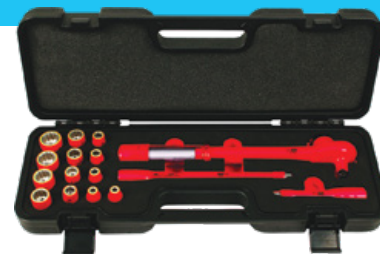
### 26-Piece Insulated Essentials Tool Kit

- Screwdrivers:
  - Slotted: 3.5mm, 4.5mm, 6.5mm
  - Phillips: #1, #2
  - Torx®: T20, T25, T30
- 1/4" drive, 6 pt. sockets: 5-13mm
- 1/4" drive ratchet
- 2" & 4" extension bars
- Open end wrenches: 8mm-13mm
- 8" Tweezers • 3-Pc pliers/cutters
- 8.5" Cable stripping knife

Each item in this set can also be purchased separately.

**wiha** 

 Made in Germany



Each item in this set can also be purchased separately.

### 16-Pc 3/8" Drive Insulated Ratcheting Torque Wrench and Socket Sets

Sets include:

- Ratcheting torque wrench: 4-37 ft-lb (5-50 Nm)
- Metric or SAE sockets
- Extension bars: 5" & 10"
- Certified to 1000 Volt AC

WIH-30190	SAE	1/4" – 7/8"
WIH-30192	Metric	8mm – 20mm

WIH-31391

### 13-Pc 1/4" Drive Insulated Metric Socket Set

- Sockets: 5mm – 14mm
- Extensions: 2", 4"
- 1/4" Drive reversible ratchet
- Certified to 1000 Volt AC or 1500 Volt DC



Each item in this set can also be purchased separately.

WIH-31590

### 10-Pc 3/8" Drive Insulated Metric Socket Set

- Sockets: 8mm – 19mm
- Extension: 5"
- 3/8" Drive reversible ratchet
- Certified to 1000 Volt AC or 1500 Volt DC



Each item in this set can also be purchased separately.

**TITAN**

TIT-66100

### 18-Pc 1/4" Drive Metric Socket Set, 1000V Insulated

- (13) Sockets: 4-14 mm
- Extensions: 2", 3", 4", 6"
- 1/4" drive reversible ratchet with quick release



**wiha** 

 Made in Germany

Each item in this set can also be purchased separately.

WIH-31491

### 16-Pc 3/8" Drive Insulated Inch/Metric Socket Set

- Inch sockets: 5/16" – 3/4"
- Metric sockets: 8mm – 19mm
- Certified to 1000 Volt AC or 1500 Volt DC





# ELECTRIC & HYBRID VEHICLE SAFETY SOLUTIONS



## EV & HEV Service Tools & Equipment



### Insulated Extensions

- Certified to 1000 Volt AC or 1500 Volt DC

WIH-12854	1/4" x 2"
WIH-12855	1/4" x 4"



### TITAN



TIT-17237

### 7-Pc Insulated Screwdriver Set with Magnetic Tips

- Slotted: 1/8" x 3", 5/32" x 4", 7/32" x 5", 1/4" x 6"
- Phillips: #0 x 3", #1 x 4", #2 x 4"



Each item in this set can also be purchased separately.

WIH-28789

### 11-Pc Insulated TorqueVario-S Driver and SlimLine Blade Set

- TorqueVario-S driver: 10-50 in-lb
- SlimLine insulated blades:
  - Slotted: 4mm, 6.5mm; Phillips: #1, #2;
  - Square: #1, #2; Xeno: Terminal #1, #2
- Certified to 1000 Volt AC



CRE-CTVDESDS

### 7-Pc VDE 1000V Insulated Screwdriver Set

- Slotted: 1/8" x 3", 5/32" x 4", 7/32" x 5", 1/4" x 6"
- Phillips: #0 x 3", #1 x 3", #2 x 4"



### Milwaukee® 1000V Insulated Tools

- Tested and certified to UL®, OSHA, VDE & GS standards
- Dual layer insulation offers visual wear indication for tool replacement
- Flame retardant & impact resistant handle and shank
- Visible ID markings



MLW-48-22-2202

### 3-Pc 1000V Insulated Screwdriver Set

- ECX™: #1 x 4"
- Phillips: #2 x 4"
- Slotted: 1/4" x 6"



MLW-48-22-2204

### 4-Pc 1000V Insulated Screwdriver Set

- Slotted: 1/4" and 3/8" – 6" and 8" long
- Phillips: #1 and #2 – 3" and 4" long



MLW-48-22-2205

### 4-Pc 1000V Insulated Screwdriver Set

- Slotted: 1/4" and 3/8" – 6" and 8" long
- Square: #1 and #2 – 3" and 4" long



MLW-48-22-2210

### 10-Pc 1000V Insulated Screwdriver Set

- ECX™: #1 x 4"
- Phillips: #1 x 3", #2 x 4", #3 x 6"
- Slotted: 1/4" x 6", 5/16" x 7", 3/8" x 8"
- Square: #1 x 3", #2 x 4", #3 x 6"





# ELECTRIC & HYBRID VEHICLE SAFETY SOLUTIONS

## EV & HEV Service Tools & Equipment

**wiha**



Each item in this set can also be purchased separately.



33478



33490

### Insulated T-Handle Hex Screwdriver Sets

- Certified to 1000 Volt AC

WIH-33478	5-Piece	Metric: 4mm, 5mm, 6mm, 8mm, 10mm
WIH-33490	6-Piece	Inch: 5/32", 3/16", 7/32", 1/4", 5/16", 3/8"

**KNIPEX**



KNI-98 33 50

### 3/8" Drive 15" Long Reversible Torque Wrench, 1000V Insulated

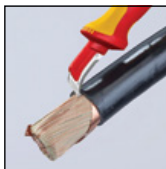
- Transparent scale range: 5-50 Nm
- Lockable torque adjustment



KNI-98 55

### 1000-Volt Insulated Electrician's Dismantling Knife, 7" Long

- 1.5" fixed hook blade with guide shoe at the blade point: no damage of the conductor insulation



### Insulated Cable Cutters

- Operating voltage: 1000V AC – 1500V DC

**CATU**



Item #	Length	Capacity
CTU-MO-67501	7"	15mm
CTU-MO-67502	9"	18mm



**wiha**



75220



75302



75304



### Insulated Tweezers

- Certified to 1000 Volt AC

Item #	Description
WIH-75220	8" Insulated Tweezers, Serrated, Straight Blunt Tip
WIH-75302	6" Insulated Tweezers, Serrated, Angled Fine Tip
WIH-75304	8" Insulated Tweezers, Serrated, Angled Blunt Tip

**KNIPEX**



KNI-98 99 11

### 17-Pc Compact Tool Set, 1000V Insulated

- 8" Combination pliers
- 6-1/4" Diagonal cutters
- 7-1/4" Cable knife
- Slotted screwdrivers: 1/8", 5/32", 7/32"
- Phillips® screwdriver: #0
- 1/2" Drive reversible ratchet
- 1/2" Drive Hex socket set: 10mm-19mm
- Extensions: 5", 10"



**wiha**



WIH-20196

### 13-Pc Insulated Open End Wrench Tray Set

- 8mm, 10mm, 11mm, 12mm, 13mm, 14mm, 15mm, 16mm, 17mm, 18mm, 19mm, 22mm, 24mm
- Certified to 1000 Volt AC



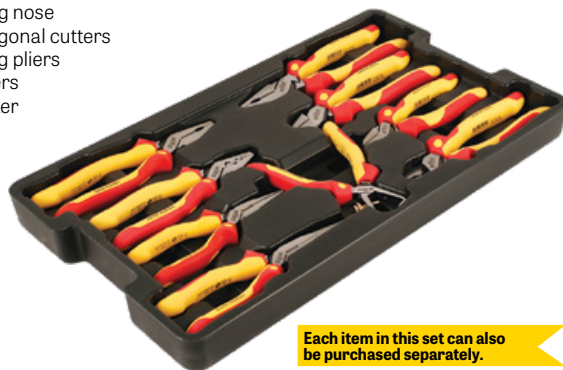
Each item in this set can also be purchased separately.

WIH-32999

### 9-Pc Insulated Pliers/Cutters Tray Set

- 9" Lineman's with crimper
- 8" Lineman's
- 6.3" & 8" Long nose
- 6.3" & 8" Diagonal cutters
- 6.3" Stripping pliers
- 7" Crimp pliers
- 8" Cable cutter

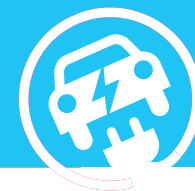
**wiha**



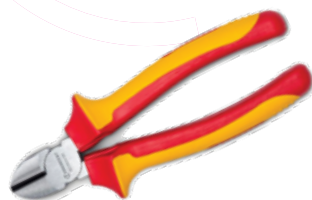
Each item in this set can also be purchased separately.

# ELECTRIC & HYBRID VEHICLE SAFETY SOLUTIONS

EV & HEV Service Tools & Equipment



**CRESCENT**



6DIAGVDE



7DIAGVDE



6LNVDE



8LNVDE



6LMVDE



7LMVDE



8LMVDE



6WSVDE

## 1000V Insulated Pliers

Item #	Description
<b>Diagonal Cutting Pliers</b>	
CRE-6DIAGVDE	6" 1000V Insulated Diagonal Pliers
CRE-7DIAGVDE	7" 1000V Insulated Diagonal Pliers
<b>Long Nose Pliers</b>	
CRE-6LNVDE	6" 1000V Insulated Long Nose Pliers
CRE-8LNVDE	8" 1000V Insulated Long Nose Pliers
<b>Linesman Pliers</b>	
CRE-6LMVDE	6" 1000V Insulated Linesman Pliers
CRE-7LMVDE	7" 1000V Insulated Linesman Pliers
CRE-8LMVDE	8" 1000V Insulated Linesman Pliers
<b>Wire Stripper Pliers</b>	
CRE-6WSVDE	6" 1000V Insulated Wire Stripper Pliers

**TITAN**



73346



73347



73348



73336



73338



73326



73327



73328

## 1000V Insulated Pliers

Item #	Description
<b>Diagonal Cutting Pliers</b>	
TIT-73346	6" Diagonal Pliers, 1000V Insulated
TIT-73347	7" Extended Diagonal Pliers, 1000V Insulated
TIT-73348	8" Extended Diagonal Pliers, 1000V Insulated
<b>Long Nose Pliers</b>	
TIT-73336	6" Long Nose Pliers, 1000V Insulated
TIT-73338	8" Long Nose Pliers, 1000V Insulated
<b>Linesman Pliers</b>	
TIT-73326	6" Combination Linesman's Pliers, 1000V Insulated
TIT-73327	7" Combination Linesman's Pliers, 1000V Insulated
TIT-73328	8" Combination Linesman's Pliers, 1000V Insulated





# ELECTRIC & HYBRID VEHICLE SAFETY SOLUTIONS

## EV & HEV Service Tools & Equipment



CTU-M07582D

### Entirely Insulated Magnet on Flexible Handle

- Magnet diameter: 0.24" (6mm)
- Maximum load to the magnet: 1.65 lbs (0.750 kg)
- Certified to 1000 Volt AC or 1500 Volt DC



## TITAN

TIT-71101

### 22" Long 1000V Insulated Flexible Inspection Mirror

- 2" mirror



TIT-71100

### 22" Long 1000V Insulated Flexible Magnetic Pick-Up Tool

- 1.5 lbs magnetic capacity



CTU-ALPV-XL-D

### Locking Cover for Steering Wheel

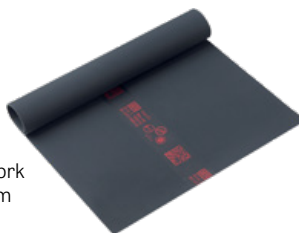
- Up to 24.4" (62 cm)
- Transparent pocket (A5 size) allows to display a personalized message during the lock-out procedure
- Strap closure at the back with 10mm metal eyelets for inserting a padlock and self-gripping part



CTU-MP-11/11

### Insulating Mat – Class 0

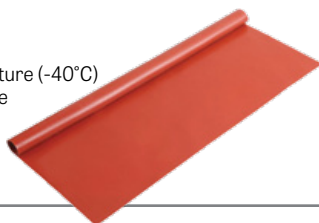
- Insulating mat for live line work and dead work
- 3.3 ft. x 3.3 ft. (1m x 1m) • Thickness: 2.2mm
- Operating voltage: 1000V AC – 1500V DC
- Low temperature folding test at -40 °C
- Operating temp.: -40°C to +55°C



CTU-MP-220

### Orange Insulating Blanket – Class 0

- Used as protection for workers operating on live lines, live parts or in the vicinity of live parts
- 3.3 ft. x 3.3 ft. (1m x 1m)
- Thickness: 1.2mm
- Operating voltage: 1000V AC – 1500V DC
- Resistance to bending at very low temperature (-40°C)
- Oil resistance and high puncture resistance
- Operating temp.: -40°C to +55°C



KNI-98 67 05

### 20" x 20" Rubber Mat, 1000V Insulated

- For added protection when working live or close to live parts
- Thickness: 1/16" (1.58mm)

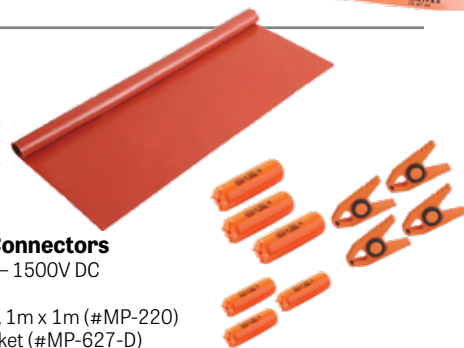


Each item in this set can also  
be purchased separately.

CTU-KIT-RC-TST1

### Protective Equipment Kit for Live Conductors and Connectors

- Operating voltage: 1000V AC – 1500V DC
- Includes:
- (1) Insulating blanket, Class 0, 1m x 1m (#MP-220)
- (4) Insulating clamps for blanket (#MP-627-D)
- (3) Insulating caps, Class 0, 30mm x 120mm (#MP-635/30-D)
- (3) Insulating caps, Class 0, 60mm x 180mm (#MP-635/60-D)



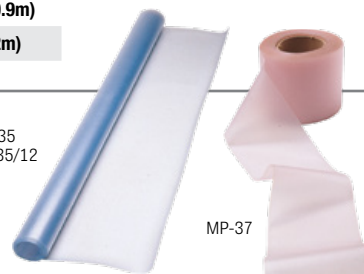
### Insulating Blanket – Class 0

- Used as protection for workers operating on live parts or in the vicinity of live parts
- Operating voltage: 1,000V AC - 1,500V DC
- Acid and oil resistance
- High puncture resistance
- Gripping tape ("Velcro" type) all around the blanket for fixation or fitting with another blanket
- Operating temp. range: -40°C to +55°C

Item #	Description
CTU-MP-123	14" x 26" (0.36m x 0.66m)
CTU-MP-123/1	19.5" x 35.5" (0.5m x 0.9m)
CTU-MP-123/2	31.5" x 47" (0.8m x 1.2m)



MP-35  
ML-35/12



MP-37

### Insulating Transparent & Flexible PVC Blanket – Class 0

- Insulating blanket for workers operating on live parts or in the vicinity of live parts
- Operating voltage: 1,000 V AC - 1,500 V DC
- Must be fixed with MP-41A70 insulating magnets or MP-41-..., or MP-62.D clamps
- Resistance to acid, oil and ozone
- Operating temp. range: -40°C to +55°C

Item #	Description
CTU-MP-35	4.25 ft. x 82 ft. (1.3m x 25m)
CTU-MP-35/12	4.25 ft. x 41 ft. (1.3m x 12.5m)
CTU-MP-37	3.5" x 82 ft. (90mm x 25m)

# ELECTRIC & HYBRID VEHICLE SAFETY SOLUTIONS



## EV & HEV Service Tools & Equipment

**CATU**

Made in France

Each item in this set can also be purchased separately.



CTU-KIT-VEH

### Delineation Kit for Application in the Field of Electric & Hybrid Vehicles and Machines

- (6) Red and white ballasted boundary posts (#AL-323)
- (1) Plastic chain with red and white links, 25m (#AL-31/25)
- (2) Plastic signs, 450mm x 150mm (#AP-72)

**CATU**

Made in France

AL-325



AL-326

### Folding Modular Safety Barrier

- Lightweight and stable 3-panel intervention barrier (AL-325), used to temporarily fence off and delimit a work area
- Light and flexible structure made of PVC tubes and panels made of 100% polyester fabric in fluorescent yellow
- Modularity: possibility to add or remove panels
- AL-326: Additional element made up of a single panel, allowing to enlarge the barrier
- Fixing by 2 junction clips (supplied)
- For indoor use

Item #	Description	Dimensions
CTU-AL-325	3-Panel Barrier	5.5 ft. x 3.25 ft. (1.71m x 1m)
CTU-AL-326	1 Panel Extension	2 ft. x 3.25 ft. (0.57m x 1m)

**CATU**

Made in France

CTU-CD-307

### Portable Fire Extinguisher for Li-Ion Battery Fire, 3L

- Can be used on batteries with a maximum voltage of 1,000 V AC - 1,500 V DC
- Fire class A
- Limits the smoke formation
- Water extinguisher + spray additive, biodegradable
- Projection distance: 4m to 6m
- Service life: 10 years



**CATU**

Made in France



CTU-ACA-10

### "Electric Hazard" Warning Pyramid with Magnetic Base

- Cardboard cone, 5.5" (140mm) side

**CATU**

Made in France



CTU-AT-5005

### Safety Adhesive Signaling/Delineation Tape

- Self-adhesive PVC
- 2" x 328 ft. (50mm x 100m)

**KLEIN TOOLS**

KLE-58000

### CAUTION Tape, Barricade

- 3" x 200 feet (76mm x 61m)
- Made of tough, durable (2.5 mil) polyethylene
- Highly resistant to acids, alkalis and other components



CTU-CS452

### Rescue Stick with Insulated Permanent Hook

- 45 kV
- 1.65m long
- Includes wall brackets (#CI-06-D)

**CATU**

Made in France



# ELECTRIC & HYBRID VEHICLE SAFETY SOLUTIONS

## EV & HEV Service Tools & Equipment



Each item in this set can also be purchased separately.

CTU-CZ-EV-RESC

### Rescue Wall Kit for Automotive Maintenance and Body Repair Shops

- (1) Rescue stick with insulated hook (#CS-45/2)
- (1) Wall box for insulated gloves (#CG-35-2)
- (1) Pair of rubber insulating gloves, Class 0, 1000V AC / 1500V DC, size 10 (#CGM-0-10)
- (1) Fire extinguisher for Li-Ion battery (#CD-307)
- Wall mounting accessories



Each item in this set can also be purchased separately.

CTU-KIT-VEH-DEP

### Head and Hand Protection Kit for Towing Services for Electric and Hybrid Vehicles and Machines

- (1) Arc-Flash protective faceshield with headband and a storage bag (#MO-286)
- (1) Pair of short insulating gloves (28cm), Class 0, 1000V AC / 1500V DC, size 10 (#CG-0-10-R-28)
- (1) Pair of cotton under-gloves (#CG-80-H)
- (1) Pair of short leather overgloves, size 10 (#CG-984-10)
- (1) Bag for protection and storage of gloves (#CG-36-1)
- (40) "DAMAGED VEHICLE" removable stickers (#AT-81)
- (1) Non-conducting safety padlock (#PP-6-38-R-Z)
- (10) Safety Tag-Out badges with warning sign (#AP-460)
- (1) Storage bag (#MO-42/2)



### High-Visibility Multi-Risk Parka with Hood for Protection Against Electric Arc

- Protection against thermal hazards of an electric arc, heat and flames, rain protection, anti-static, small splash of liquid chemicals
- Central zip with flap, adjustable belt at the waist
- 2 Chest pockets and 2 hip pockets

Item #	Size
CTU-M-883374	S
CTU-M-883377	M
CTU-M-883378	L
CTU-M-883379	XL
CTU-M-883380	2XL
CTU-M-883381	3XL



### CAT'ARC Multi-Risk Switching Jacket to Protect Against an Electric Arc

- Designed to be worn on top of the usual clothing
- Adjustable hood
- To be worn with a visor or a helmet
- Velcro® central fastening along the entire length
- Back length of 47" (121 cm)
- Visor, insulated gloves and shoes sold separately

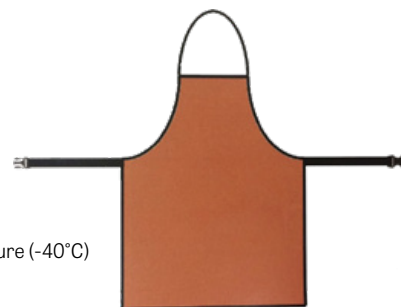
Item #	Size
CTU-AFG-2300-S	S
CTU-AFG-2300-L	L
CTU-AFG-2300-2XL	2XL
CTU-AFG-2300-4XL	4XL



CTU-MV-99-INS

### Orange Elastomer Insulating Apron - Class 0

- Operating voltage: 1000V AC - 1500V DC
- Adjustable belt strap with plastic lock
- Acid and oil resistant
- High resistance to perforation
- Can be folded at very low temperature (-40°C)
- Insulator's H x W: 65 cm x 50 cm
- Thickness: 1.2mm



### Safety Shoes with Insulating Sole - Class 0

- Operating voltage: 1000V AC - 1500V DC
- Low-cut and textile type shoe
- Slip resistant sole
- Leather reinforcements at the front and the back
- Extra perspiration-resistant, anti-bacterial lining

Item #	Size
CTU-MV-226-40	40
CTU-MV-226-41	41
CTU-MV-226-42	42
CTU-MV-226-43	43
CTU-MV-226-44	44
CTU-MV-226-45	45
CTU-MV-226-46	46
CTU-MV-226-47	47

### Insulating Overboots - Class 1

- Operating voltage: 7,500V AC / 11,250V DC
- Meets the requirements of ASTM 1117 (20kV)
- Ideal for temporary and frequent use
- Fit perfectly over safety shoes
- 100% waterproof
- Fuel and oil resistant rubber sole promoting a superior slip resistance
- Sole pattern design avoids clogging and catching on rungs when climbing ladders
- Hot contact resistant sole to 300°C for 60 seconds
- Quick and easy to wear & remove; kick-off lug for hands free removal
- Comfortable, durable and lightweight



Item #	Size
CTU-MV-138-M	M (39-42)
CTU-MV-138-L	L (43-45)
CTU-MV-138-XL	XL (46-49)



# ELECTRIC & HYBRID VEHICLE SAFETY SOLUTIONS



## EV & HEV Service Tools & Equipment

CTU-MO-286

### Arc-Flash Protective Face Shield with Headband for Electrician

- Protective face shield against thermal effect of short-circuit electric arcs
- To wear without a helmet
- Ratchet head adjustment
- Anti-scratch and anti-fogging treatments
- Visor height: 8" (20.5 cm)



### Electrical Insulating Gloves, Red - Class 0

- Includes the dielectric and conformity certificate
- Rolled edges for more comfort
- Material: Natural Latex
- Length: 14"



Item #	Size
CTU-GI-01408-RR1	8 (M)
CTU-GI-01409-RR1	9 (L)
CTU-GI-01410-RR1	10 (XL)
CTU-GI-01411-RR1	11 (2XL)

### Leather Overgloves for Low Voltage Insulating Gloves

- Ensure mechanical protection for insulating gloves (Class 00 & 0)
- Resistant to flame and contact heat of 100°C for 10 seconds according to EN 407
- Velcro® adjustable cuffs



Item #	Size
CTU-CG-981-08	8
CTU-CG-981-09	9
CTU-CG-981-10	10
CTU-CG-981-11	11

### Undergloves for Insulating Gloves

- Comfortable fit, washable undergloves improve the comfort of use and hygiene of insulating gloves
- Helps protect from Latex allergies



Item #	Fits Size
CTU-CG-80-F	8
CTU-CG-80-H	9, 10, 11

CTU-CG-36-1

### Storage Case for Insulating Gloves - Class 00, 0, 1

- Made of repellent reinforced fabric for the transportation of insulating gloves in vehicles and tool boxes
- Rear loop for belt carriage and transparent pocket for instructions or identification
- Velcro fastening
- 16.5" x 7" x 2"



CTU-CG-117

### Pneumatic Tester for Insulating Gloves

- For compulsory control of insulating gloves from class 00 to 4 before use
- Checking is done by inflating the insulating gloves and immersing in water



### ANSELL GLOVE SIZING CHART

Measure the width of your hand from the base of your index finger and across your knuckles.

**Ansell**

7 / S	75mm / 3"
8 / M	88mm / 3.5"
9 / L	101mm / 4"
10 / XL	113mm / 4.5"
11 / 2XL	126mm / 5"
12 / 3XL	140mm / 5.5"

### No Returns Accepted

### 100% Natural Rubber Electrical Insulating Gloves

- 11" long gloves
- Ergonomically-designed hand-at-rest shape for less hand fatigue
- Generous flared cuff allows room for clothing and improves ventilation
- Exceeds ASTM D120 standards for tensile strength, elongation, tear & puncture resistance
- Product meets all applicable ASTM, NFPA, OSHA, CSA and EN standards



### Red Gloves, Class 0

- Max. use voltage  
AC/DC 1,000 / 1,500 Volt

Item #	Size
ANS-RIG011R070	7
ANS-RIG011R080	8
ANS-RIG011R090	9
ANS-RIG011R100	10
ANS-RIG011R110	11
ANS-RIG011R120	12

### Yellow Gloves, Class 0

- Max. use voltage  
AC/DC 1,000 / 1,500 Volt

Item #	Size
ANS-RIG011Y070	7
ANS-RIG011Y080	8
ANS-RIG011Y090	9
ANS-RIG011Y100	10
ANS-RIG011Y110	11
ANS-RIG011Y120	12

### 10" Industrial Leather Protector Gloves - Class 00, 0

- Should always be worn over Rubber Insulating Gloves to meet OSHA and ASTM standards to provide mechanical protection against cuts, abrasions and punctures
- SIZING: These leather gloves should be ordered in the same size as the Rubber Electrical Insulating Gloves

**Ansell**

Item #	Size
ANS-RIGLCVVR070	7
ANS-RIGLCVVR080	8
ANS-RIGLCVVR090	9
ANS-RIGLCVVR100	10
ANS-RIGLCVVR110	11
ANS-RIGLCVVR120	12



### Protective Bag with Clip

- Canvas glove bag is designed for use with Electrical Insulating Gloves

Item #	Size
ANS-RIGCVSBAG14	14"
ANS-RIGCVSBAG16	16"

**Ansell**





# ELECTRIC & HYBRID VEHICLE SAFETY SOLUTIONS

## EV & HEV Service Tools & Equipment



ARCTIC COMMANDER	MTC-COMMANDER2100
<b>FEATURES</b>	<b>Fully Automatic R134A</b>
Colour Touch Screen	10"
Automatic and Manual Procedures	■
Automatic Vacuum Leak Test: Programmable	■
Printer	Optional
Vehicle A/C System Flushing	
Vacuum Pump	6 CFM
Refrigerant Identifier	
Wi-Fi Capable	■



MAXX AIR	CPS-MX3030	CPS-MSX1234	CPS-MXHD
<b>FEATURES</b>	<b>R134A &amp; R1234YF Hybrid Compatible</b>	<b>R1234YF Hybrid Compatible</b>	<b>R134A For Commercial Vehicles Hybrid Compatible</b>
Colour Touch Screen	7"	7"	7"
Printing	Wi-Fi printer capable. Thermal printer (optional).	Wi-Fi printer capable. Thermal printer (optional).	Wi-Fi printer capable. Thermal printer (optional).
Recovery Tanks	Includes 2 x 30lb. Compatible with 50lb.	Includes 2 x 30lb. Compatible with 50lb.	Includes 1 x 50lb. Compatible with 90lb.
Vacuum Pump	2 CFM	2 CFM	6 CFM
Refrigerant Identifier	■ (R1234yf)	■	
Wi-Fi Connectivity	■	■	■
Bluetooth® Connectivity	Optional	Optional	



	ROB-AC1234-9	ROB-AC1234-4	ROB-34788NI-H
<b>FEATURES</b>	<b>R1234YF &amp; Hybrid Compatible</b>	<b>R1234YF &amp; Hybrid Compatible</b>	<b>R134A Hybrid Compatible</b>
Colour Display	10"	4.3" Diag.	5" x 9"
Fully Automatic Operation	■	■	■
Printer	Google Cloud Printing	Optional	Optional
A/C System Flushing	■	■	■
Refrigerant Identifier	■	■	
Vacuum Pump	1.5 CFM	1.5 CFM	1.5 CFM
Connectivity	Incorporated Wi-Fi & Bluetooth® Technology	Wi-Fi & Bluetooth® Capable (optional kit)	Wi-Fi Capable (optional kit)

**FREE!**

Buy #ROB-AC1234-4 and obtain #ROB-30038 for free: Printer.



# ELECTRIC & HYBRID VEHICLE SAFETY SOLUTIONS



## EV & HEV Service Tools & Equipment

TRACERLINE®



HBF-TPOUV20EV

### POE-Based EV A/C Dye UV Leak Detection Kit

- Compatible with R-1234yf & R-134a
- **TP9815EV-P3:** (3) 0.25 oz (7 ml) cartridges of Electric Vehicle POE-based A/C Dye Mini-EZ™ cartridges
- **TP9845:** EZ-Ject™ dye injector
- **TP-9813:** R-134a coupler and purge fitting
- **TP19:** fluorescent dye cleaner
- **TP9831:** R-1234yf adapter



TRACERLINE®



HBF-TP9814EV-BX

### POE-Based EV A/C Dye MINI-EZ™ Injection Kit

- Compatible with R-1234yf & R-134a
- **TP9815EV-P3:** (3) 0.25 oz (7 ml) cartridges of Electric Vehicle POE-based A/C Dye Mini-EZ™ cartridges
- **TP9845:** EZ-Ject™ dye injector
- **TP-9813:** R-134a coupler and purge fitting
- **TP9831:** R-1234yf adapter
- Services up to 3 vehicles



TRACERLINE®



HBF-TP9815EV-P3

### POE-Based EV A/C Dye MINI-EZ™ Cartridges

- Compatible with R-1234yf & R-134a
- (3) 0.25 oz (7 ml) single-dose Electric Vehicle A/C dye cartridges
- Services up to 3 vehicles



TRACERLINE®



### Electric Vehicle A/C Oil & A/C Oil + UV Dye

- Compatible with R-1234yf & R-134a
- Services 1 vehicle

Item #	Description
HBF-TP100EV-5	5 oz (148 ml) Foil Pouch with POE-Based A/C Oil
HBF-TP100EVD-5	5 oz (148 ml) Foil Pouch with POE-Based A/C Oil + UV Fluorescent Dye

TP100EV-5



TP100EVD-5

TRACERLINE®



HBF-TP9812-BX

### Hybrid Vehicle/ESTER MINI-EZ™ Universal A/C Dye Injection Kit

- Uniquely blended with special additives for hybrid A/C systems
- Compatible with R-1234yf & R-134a
- **TP9811-P3:** (3) 0.25 oz (7 ml) single-dose Hybrid Vehicle/Ester A/C dye cartridges
- **TP9845:** EZ-Ject™ dye injector
- **TP-9813:** R-134a coupler and purge fitting
- **TP9831:** R-1234yf adapter
- Services up to 3 vehicles



TRACERLINE®



HBF-TP9811-P3

### Hybrid Vehicle/ESTER MINI-EZ™ Universal A/C Dye

- Uniquely blended with special additives for hybrid A/C systems
- Compatible with R-1234yf & R-134a
- (3) 0.25 oz (7 ml) single-dose Hybrid Vehicle/Ester A/C dye cartridges
- Services up to 3 vehicles



TRACERLINE®



### Hybrid Vehicle /ESTER A/C Oil & A/C Oil + UV Dye

- Compatible with R-1234yf & R-134a
- Services 1 vehicle
- Viscosity: 32 cSt/Ester

Item #	Description
HBF-TP32EH-5	5 oz (148 ml) Foil Pouch with A/C Oil
HBF-TP32EHD-5	5 oz (148 ml) Foil Pouch with A/C Oil + UV Dye

TP32EH-5



TP32EHD-5





# ELECTRIC & HYBRID VEHICLE SAFETY SOLUTIONS

## EV & HEV Service Tools & Equipment



TBQ-4JPT

### 4-Pc Lifting Jack Pads for Tesla Models S, 3, X, Y

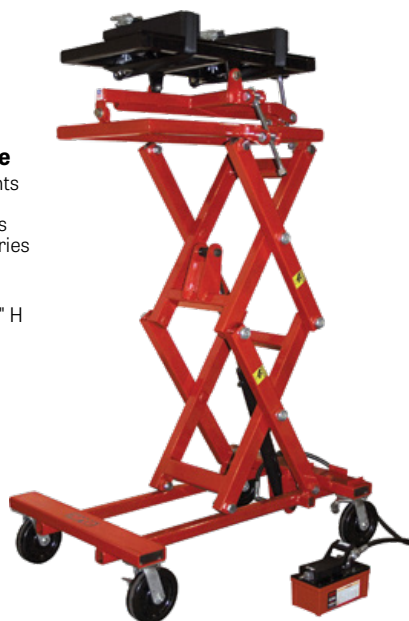
- These rubber pads are positioned under the designated Tesla lift points to prevent damage to the battery or the side rails of the vehicle when lifting
- Load capacity (4 pads): 5 ton



NRC-72850A

### 2,500 Lbs Capacity Powertrain Lift/Work Table

- Handles powertrain components like engines, transmissions, transaxle assemblies, rear ends and large electric vehicle batteries
- Air/hydraulic foot pump
- Lift height: 31" to 78"
- Overall dim.: 50" L x 33" W x 35" H
- Table size: 19" x 36"
- Saddle tilt: 15°
- Weight: 665 lbs



ATD-7478

### 2,500 Lbs Capacity Powertrain Lifting Table

- Designed to handle heavy engine, drive axle assemblies, transmissions, electric vehicle batteries and other vehicle components
- Air/hydraulic foot pump
- Capacity @ 100 psi: 2,500 lbs
- Lifting range: 33" - 77"
- Table size: 19.7" x 32"
- Table tilt: +/- 11°
- Overall dim.: 48" x 33" x 33"
- Weight: 586 lbs



Made in  
France

CTU-MO-810

### Insulating Device To Lift Up Batteries

- To lift up batteries for live working at low voltage
- To lift forklift batteries elements for maintenance operations
- Operating voltage: 1,000 V AC - 1,500 V DC
- Adjustable fixing capacity from 81mm to 118 mm
- Max. load: 507 lbs (230 kg)



OTC-1585A

### 1,250 Lbs Capacity Power Train Lift with Tilting Plate

- Ideal for engine and transaxle service
- Height range: 29-1/2" to 68-1/2"
- Weight: 372 lbs



CTA-8854

### 3L Capacity ELECTRIC VEHICLE Brake Bleeding Kit

- Services various EV models, including Tesla Models X, S, 3, and Y
- Includes 36mm and 37mm brake bleeder all-metal adapters



# ELECTRIC & HYBRID VEHICLE SAFETY SOLUTIONS

EV & HEV Service Tools & Equipment



## AUTEL® MAXICHARGER™

### AC WALLBOX HOME



Mobile device or computer not included

### AC WALLBOX COMMERCIAL



### AC Wallbox Level 2 Electric Vehicle Chargers

- Compatible with all EV & plug-in hybrid vehicles
- Indoor/Outdoor use, built to withstand any type of climate
- Level 2 chargers require 240V
- Up to 9X faster charge
- Dimensions: 7.36" x 13.22"
- Generous 25-foot cable
- Safe & secure access control
- Connect by Wi-Fi, Bluetooth, Ethernet, CAN, RS485 or 4G Cellular (4G Cellular works with the Commercial unit only)
- 4 LED lights on face of charger clearly indicate the status of your charger
- 24/7 customer support line
- Automatic firmware updates
- Includes 3 year warranty

#### • AC WALLBOX HOME Smart Charging:

The Autel Mobile Charge App enables remote start, stop, monitoring and scheduling. Available at App Store or Google Play.

#### • AC WALLBOX COMMERCIAL Smart Charging:

Smart charger capabilities with Autel Cloud Charging Portal to monitor and manage all chargers and control access from your computer or mobile device. This allows you to control station access, pricing along with hours of operation. Smart features like demand response and dynamic load balancing help with reducing operation costs.

Product	Item #	Power Output	Power Supply	Holster	Front Face	Wi-Fi	Mobile App	Internet-Based Commercial Portal
	AUL-MC40AP14S HOME	Adjustable up to 40 Amps 9.6 kW	NEMA 14-50 Plug	Separate	Indicator Lights Only	✓	✓	
	AUL-MC40AP6S HOME	Adjustable up to 40 Amps 9.6 kW	NEMA 6-50 Plug	Separate	Indicator Lights Only	✓	✓	
	AUL-MC50AHS HOME	Adjustable up to 50 Amps 12 kW	HARDWIRED*	Separate	Indicator Lights Only	✓	✓	
	AUL-MC40AP14I HOME	Adjustable up to 40 Amps 9.6 kW	NEMA 14-50 Plug	In-Body	Indicator Lights Only	✓	✓	
	AUL-MC40AP6I HOME	Adjustable up to 40 Amps 9.6 kW	NEMA 6-50 Plug	In-Body	Indicator Lights Only	✓	✓	
	AUL-MC50AHI HOME	Adjustable up to 50 Amps 12 kW	HARDWIRED*	In-Body	Indicator Lights Only	✓	✓	
	AUL-MCC50AHI COMMERCIAL	Adjustable up to 50 Amps   12 kW & 72 KM of range per hour	HARDWIRED*	In-Body	5" Interactive LCD Touchscreen	✓		✓

\*Recommended hardware for outdoor installation



# ELECTRIC & HYBRID VEHICLE SAFETY SOLUTIONS

## EV & HEV Service Tools & Equipment



CTU-MS-917-L

### Detex™ Low Voltage Detector

- Operating voltage: 12-690V AC / 12-750V DC
- (7) Thresholds • Frequency: 50-60 Hz
- Continuity: 200  $\Omega$  • Polarity
- Unipolar phase identification
- Phase indication
- Completely modular and adjustable to eclipse sockets



PWP-VT750LCD

### Two-Pole Voltage Tester for Electric and Hybrid Vehicles

- Safety rated at 1000V CAT III, 600V CAT IV
- Automatically selects the correct voltage range
- AC/DC Volts: 750V
- Resistance: 0-2,000 $\Omega$  • Frequency: 30Hz-999Hz
- Continuity beeper:  $\leq 600k\Omega$  • Diode test: 0.3V-0.9V
- Single phase test voltage: 100-750V



FLU-5066006

### Fluke 1507 – Insulation Resistance Tester

- Rugged, compact advanced insulation resistance tester for electrical contractors and industrial and commercial electricians
- Automatically calculates Polarization Index and Dielectric Absorption Ratio
- Makes repetitive tests simple and easy with a Compare (Pass/Fail) function
- Voltage AC/DC: 0.1V to 600V
- Continuity: 200 mA
- Resistance: 0.01  $\Omega$  to 20.00 k $\Omega$
- Insulation test range: 0.01 M $\Omega$  to 10 G $\Omega$
- Insulation test voltages: 50V, 100V, 250V, 500V, 1000V



FLU-4691215

### Fluke 1587 FC – Insulation Tester & True RMS Multimeter

- Fluke Connect®-enabled
- PI/DAR timed ratio tests
- Insulation test range: 0.01 M $\Omega$  to 2 G $\Omega$
- Insulation test voltages: 50V, 100V, 250V, 500V, 1000V
- Voltage AC/DC: 1000V
- Capacitance, diode test, temperature, Min/Max, and frequency
- Continuity: 200 mA
- Resistance: 50 M $\Omega$



KLE-ET600

### Insulation Resistance Tester with Multimeter Test Functions

- Test voltages: 125V, 250V, 500V, 1000V
- Insulation resistance: 4000M $\Omega$
- Test lock
- Live circuit detection
- AC/DC voltage: 1000V
- Resistance: 4k $\Omega$
- True RMS • Audible continuity
- Auto-ranging, Auto-Zero
- Data hold • Min/Max value
- Bar graph
- CAT IV 600V and CAT III 1000V



PWP-PPDMM

### Automotive Digital Multimeter

- Hybrid safe CAT-IV 600V
  - Digital Volt and Ohmmeter for circuit testing
- Measures:
- AC/DC Voltage to 600V
  - Current to 10 Amps
  - Resistance/Diode/Continuity to 60M Ohms
  - Capacitance: 0.0001 $\mu$ F to 60,000 $\mu$ F
  - Frequency, duty cycle
  - Temperature from -4°F to 1,832°F (-20°C to 1,000°C)
  - Data hold, Min/Max capture, relative measurement



BSD-F00E9001013CM

### MMD 540H Hybrid Digital Multimeter

- CAT III (1,000V) safety rating for hybrid vehicle circuits
- Peak, Min/Max readings as fast as 1 millisecond
- Higher amperage test ranges, up to 20 Amps
- Inductive RPM clamp for conventional and DIS ignition systems
- Fused diagnostic test leads for safe trouble shooting (up to 20 amps)
- K-Type thermocouple for quick temperature measurement
- Trilingual users manual on CD



ESI-550

### EV & Hybrid Vehicle Insulation Tester

- Test voltages: 250V-200M $\Omega$ , 500V-200M $\Omega$ , 1000V-2000M $\Omega$
- AC voltage: 0-750V, 1V resolution
- DC voltage: 0-1000V, 1V resolution
- Resistance: 0-200 $\Omega$ , 2000 $\Omega$ , 0.1 Ohm resolution
- Insulation resistance: 200M $\Omega$ , 2000M $\Omega$ , 200k resolution
- Continuity test: Audible beep  $\leq 40\Omega$ , Test current  $\leq 200$ mA
- Auto-ranging • Large dual display
- Test Hold function • Over Range indication • CAT III 1000V



ESI-595

### Automotive Meter with PC Interface

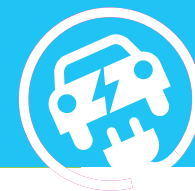
- Safe for use on hybrids and EV's
- CAT III 1,000 Volt
- Max/Min function
- DC Volts: 1000V • AC Volts: 750V
- AC/DC Amps: 20A
- Ohms: 40M $\Omega$  • Capacitance: 100 $\mu$ F
- RPM 4 : 0-4,000 RPM, 12,000 RPM x 10
- RPM2/DIS: 0-4,000 RPM, 6,000 RPM x 10
- Dwell: 1, 2, 3, 4, 5, 6, 8, 10, & 12 cylinder
- Frequency: 0-5Hz, 50Hz, 500Hz, 5kHz, 30kHz
- Duty cycle: 0.1% - 99.9%
- mS pulse width: 2.0mS - 10.0mS
- Temperature: -4°F to 1400°F, -20°C to 760°C
- Continuity • Diode test





# ELECTRIC & HYBRID VEHICLE SAFETY SOLUTIONS

## EV & HEV Service Tools & Equipment



EVDIAGKIT



**AUTEL** MAXISYS

### AUL-EVDIAGKIT

#### EV Diagnostics Upgrade Kit

- Includes EVDiag Box, software, and adapters for specific vehicles to achieve battery packs diagnostics for electric vehicles
- Compatible with the MaxiSYS Ultra, MaxiSYS Ultra ADAS, MaxiSYS MS919, and MaxiSYS MS909

#### BATTERY PACK DIAGNOSTICS

- In-depth battery pack diagnostics for the most popular EV vehicles on the market including BMW, Tesla, and VW/Audi
- State of Charge and State of Health analysis for true battery condition

MSULTRA EV



MS909EV



## MS909EV & MSULTRA EV INTELLIGENT EV DIAGNOSTICS



### Intelligent EV Diagnostics Tablets

- Secure high-voltage system testing and analysis
- Advanced diagnostics for U.S., European and Asian electric, gas & diesel, and hybrid vehicles

	AUL-MS909EV	AUL-MSULTRA EV
<b>HARDWARE</b>		
Wireless Vehicle Connection	Bluetooth MaxiFash VCI	Bluetooth MaxiFash VCMI
Colour Touchscreen	10" LCD	13" LCD
Processor	2.2 GHz + 1.8 GHz Octa-Core	2.2 GHz + 1.8 GHz Octa-Core
Memory / RAM	128GB SSD / 4GB RAM	256GB SSD / 4GB RAM
Docking Station		Included
EVDiag Box	Included	Included
<b>SOFTWARE</b>		
Operating System	ANDROID 10.0	ANDROID 7.0
Split Screen Display		View Multiple Functions At Once
High-Voltage System Diagnostics	Diagrams of High-Voltage System Block	Diagrams of High-Voltage System Block
Battery Pack Diagnostics	SOC and SOH Analysis	SOC and SOH Analysis
Advanced VCMI 5-in-1 Device		VCI, Oscilloscope, Multimeter, Waveform Generator, CAN Bus Check
Secure Gateway Access	Authorized FCA Access with AutoAuth Account	Authorized FCA Access with AutoAuth Account
<b>FEATURES</b>		
Service Resets	36 Service Features	36 Service Features
Diesel (Light & Medium Duty)	Reset Diesel Emissions	Reset Diesel Emissions



[g2stobeq.ca](http://g2stobeq.ca)

Please contact your local Distributor  
for pricing and availability.

